



**31 BEVERLEY ROAD**

NEWLANDS

[www.corumproperty.co.uk](http://www.corumproperty.co.uk)





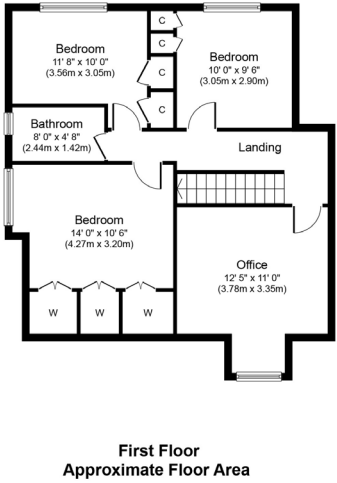
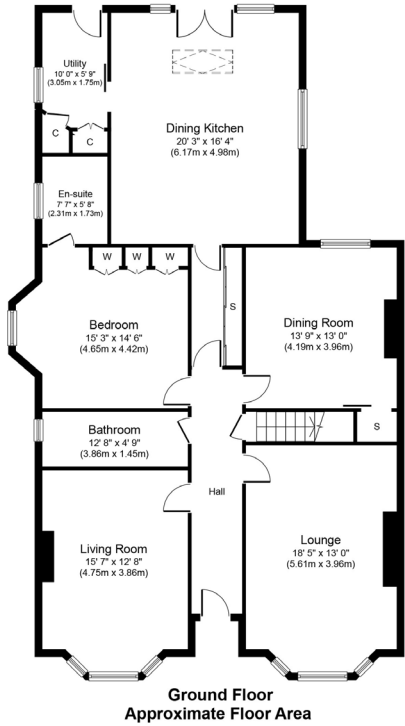
5 | BEDROOMS  
3 | BATHROOMS  
3 | PUBLIC ROOMS

A substantial 7/ 8 apartment sandstone fronted bungalow directly opposite Newlands Park comprehensively remodelled at the rear.

- Vestibule, hallway, bay windowed lounge, bay window sitting room, dining room
- Bay windowed principal bedroom, main bathroom
- Large rear projection, living / dining kitchen and utility
- Upstairs to 4 bedrooms and bathroom 3
- Gas central heating, double glazing, driveway garage
- Lovely gardens, South to the rear

Amenities

The property is positioned within walking distance of shops and amenities upon Kilmarnock Road where thriving coffee shops, restaurants and delicatessens can be found. More extensive amenities are available the Morrisons store at Newlands Road Giffnock, The Avenue shopping mall in Newton Mearns. The shopping mall at Silverburn Pollok is a short drive to the South West. Recreational pursuits are varied namely at Newlands Park, including the Dandelion Café and recently refurbished tennis courts. Pollok Country Park is a short walk to the West where Pollok House and the world famous Burrell collection can be found. Also Bellahouston Ski and Sports centre. Schooling can be found locally at primary and secondary level. There are also a number of pick up points for Glasgow's other leading independent schools. Frequent public transport provides rapid commuter access to the city centre. The M77 Connects the South side of Glasgow to Scotland's motorway network, Glasgow International airport and beyond.



Sat Nav:  
31 Beverley Road, Newlands, G43 2RW

SS4548

\*All measurements and distances are approximate.  
Floorplans are for illustration purposes and may not be to scale.

For the full home report visit  
[www.corumproperty.co.uk](http://www.corumproperty.co.uk)





WE'RE **SOLD** ON  
YOUR FUTURE



Corum Shawlands  
247 Kilmarnock Road, Shawlands, G41 3JF

**Tel:** 0141 636 7588

**Email:** [shawlands@corumproperty.co.uk](mailto:shawlands@corumproperty.co.uk)

[www.corumproperty.co.uk](http://www.corumproperty.co.uk)