



18 MIDLOTHIAN DRIVE

GLASGOW

www.corumproperty.co.uk



3 | BEDROOMS

2 | BATHROOMS

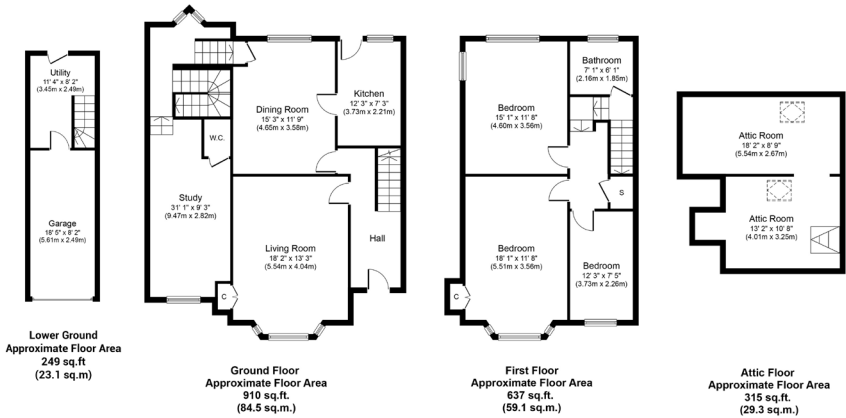
3 | PUBLIC ROOMS

This stone built semi-detached villa originally dates from the early 1900s and is found within a celebrated community on the fringe of Shawlands with numerous amenities and regular public transport options within one mile. The property has been successfully extended to the side and early viewing is imperative to better understand the internal accommodation.

- Extended semi villa in popular locale
- Six principal apartments in total
- Potential to upgrade according to taste
- Enclosed garden grounds to the rear
- Driveway parking & integrated garage
- Thriving amenities within one mile

Amenities

18 Midlothian Drive is within one mile of excellent amenities including the coffee houses, restaurants, gastropubs and bakeries of Shawlands. More extensive facilities are available at the Crossmyloof Morrisons store or the Sainsburys store on Darnley Road. Recreational pursuits within the area are available at Queens Park, Maxwell Park or Pollok Country Park. Both Crossmyloof and Shawlands train stations are within half a mile, Shields Road underground station is only two miles away and the M77 connects the Southside of Glasgow to Scotland's motorway network.



Sat Nav: 18 Midlothian Drive, Glasgow, G41 3QX

SS4554

*All measurements and distances are approximate. Floorplans are for illustration purposes and may not be to scale.

For the full home report visit www.corumproperty.co.uk



WE'RE **SOLD** ON
YOUR FUTURE



Corum Shawlands
247 Kilmarnock Road, Shawlands, G41 3JF

Tel: 0141 636 7588
Email: shawlands@corumproperty.co.uk

www.corumproperty.co.uk