



**17 STRATHENDRICK DRIVE**  
MUIREND

[www.corumproperty.co.uk](http://www.corumproperty.co.uk)





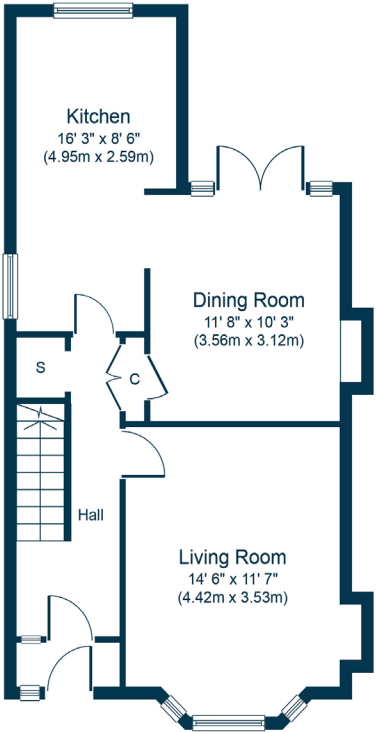
3 | BEDROOMS  
1 | BATHROOM  
2 | PUBLIC ROOMS

Set within a quiet pocket of Muirend, yet close to public transport and shops, a semi-detached villa offering extended accommodation.

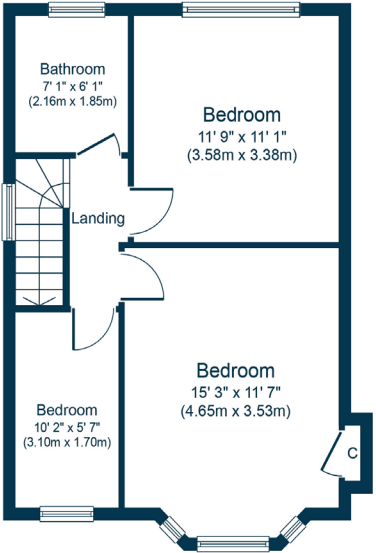
- Extended semi-detached villa
- 3 well proportioned bedrooms
- 2 public rooms (one with French doors to garden)
- Larger kitchen and bright bathroom
- Enclosed level gardens to rear

Amenities

17 Strathendrick Drive is positioned nearby Newlands Park, Newlands Tennis Club, Nuffield Health Club and amenities in Muirend or Giffnock. Frequent public transport services provide rapid commuter access to the city centre, Muirend railway station is approximately 500 yards away whilst the M77 is easily accessed (junction 2 at Pollok).



Ground Floor  
Approximate Floor Area  
544 sq.ft.  
(50.6 sq.m.)



First Floor  
Approximate Floor Area  
461 sq.ft.  
(42.8 sq.m.)

Sat Nav:  
17 Strathendrick Drive, Muirend, G44 3HW

SS4564

\*All measurements and distances are approximate.  
Floorplans are for illustration purposes and may not be to scale.

For the full home report visit  
[www.corumproperty.co.uk](http://www.corumproperty.co.uk)





WE'RE **SOLD** ON  
YOUR FUTURE



Corum Shawlands  
247 Kilmarnock Road, Shawlands, G41 3JF

**Tel:** 0141 636 7588

**Email:** shawlands@corumproperty.co.uk

[www.corumproperty.co.uk](http://www.corumproperty.co.uk)