



# 79 KELVIN COURT

## CLAYTHORN

[www.corumproperty.co.uk](http://www.corumproperty.co.uk)







**2 | BEDROOMS**

**1 | BATHROOM**

**1 | PUBLIC ROOM**

**79 Kelvin Court is a stunning, two bedroom fourth floor flat that has been meticulously upgraded by the current owners to the highest possible standards, set within the iconic Kelvin Court development. Designed by J.N. Fatkin and built between 1937 and 1938, this striking Glasgow Art Deco landmark development sits comfortably back from and runs parallel with Great Western Road. Kelvin Court is set within well-tended and landscaped gardens, with shared residents', first come first served parking to the front.**

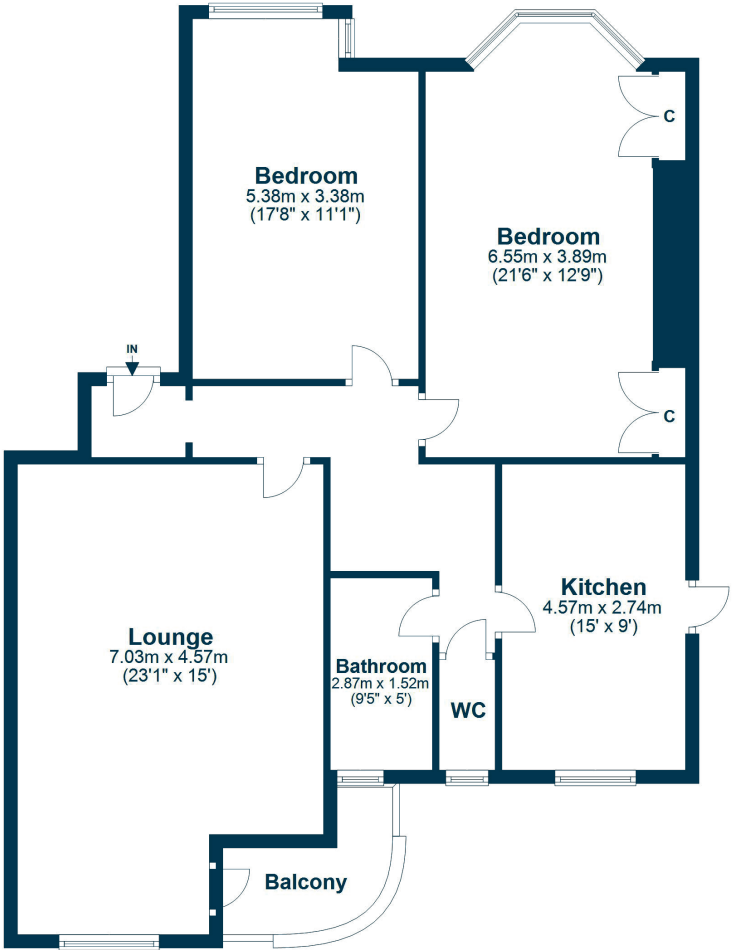
The internal accommodation comprises; welcoming reception hall, large lounge with south west facing balcony to the rear, a fantastic dining kitchen and two spacious double bedrooms. There is a separate WC and stunning family bathroom with separate walk-in shower completes the accommodation on offer.

In addition, the property benefits from gas central heating via a communal system, double glazing, lift in the building and as previously mentioned, spacious landscaped gardens with seating, including 'The Meadow' to the rear. It should also be noted, the property is within the List 1 catchment for Jordanhill School.









The Claythorn district is located within close proximity to a wide range of excellent amenities and recreational facilities, which can be found at Anniesland, Jordanhill and Hyndland. A fantastic selection of comprehensive and independent schools are located nearby.

There is a railway station at Anniesland and bus services operate on Great Western Road. There are also good road links to the City Centre, M8 motorway and Glasgow International Airport.

The property is well placed for access to a number of major employers, including Glasgow University and several hospitals.

**WE4886** | Sat Nav: 79 Kelvin Court, Claythorn, Glasgow, G12 0AQ

For the full home report visit [www.corumproperty.co.uk](http://www.corumproperty.co.uk)

\* All measurements and distances are approximate Floorplans are for illustration purposes and may not be to scale.





WE'RE **SOLD** ON  
YOUR FUTURE



Corum West End  
82 Hyndland Road, Glasgow, G12 9UT

**Tel:** 0141 357 1888

**Email:** [westendenq@corumproperty.co.uk](mailto:westendenq@corumproperty.co.uk)

[www.corumproperty.co.uk](http://www.corumproperty.co.uk)