



2D GOLF COURT, STRATHVIEW PARK

NETHERLEE

www.corumproperty.co.uk





2 | BEDROOMS

2 | BATHROOMS

2 | PUBLIC ROOMS

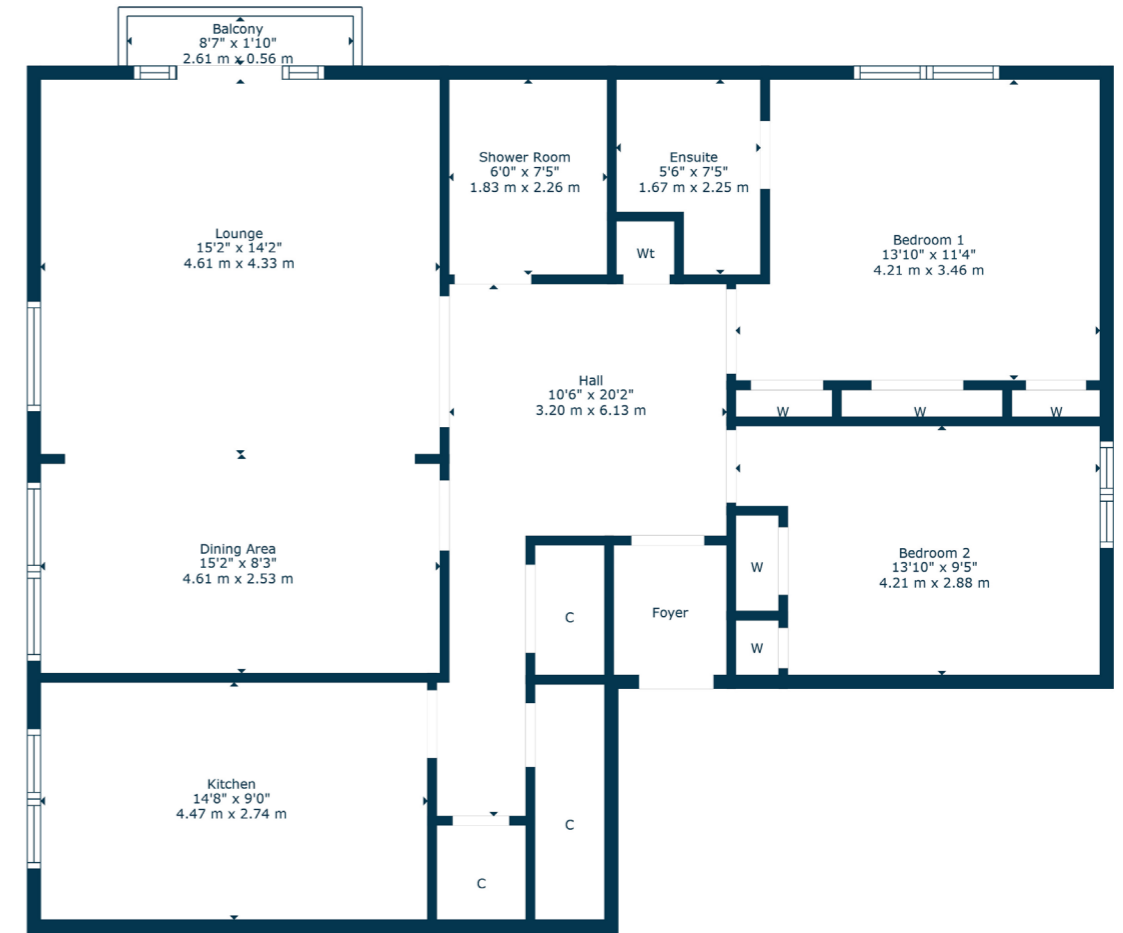
A spacious and bright first floor apartment set within a popular private residential development.

Enjoying a highly popular and sought-after location within this desirable and private pocket of Netherlee, 2D Golf Court is an outstanding two-bedroom apartment.

A well-kept resident's communal entrance with security door provides access to all the apartments with 2D being on the first floor. The accommodation extends to entrance vestibule then a large bright hallway with two large storage cupboards, linen, and a press cupboard. The apartment has a very well-proportioned lounge with French doors leading onto balcony with garden views and open plan to formal dining room. Bright dining kitchen which has a range of wall and base mounted units, a mix of appliances. The main bedroom provides built-in wardrobes, and ensuite shower room. A good second double bedroom with fitted wardrobes and spacious modern shower room completes the accommodation. The specification of the property is complete with electric heating, double glazing throughout, modern kitchen, ensuite and shower room and is decorated in neutral tones throughout.

Secure lock up garage with power and light and private residents parking.





Netherlee is one of East Renfrewshire's most sought-after residential suburbs and is a haven for young growing families enjoying access to some of the best schooling within the local area. There is a full range of independent retailers including cafes and restaurants, and the district provides swift access via both road and rail to the city centre and beyond. There is a variety of places of worship found within the surrounding area and an array of sports and leisure activities including local parks, health clubs, gyms and golf courses close to hand in addition to equestrian pursuits.

CC0727 | Sat Nav: 2D Golf Court, Strathview Park, Netherlee, G44 3LD

For the full home report visit www.corumproperty.co.uk

* All measurements and distances are approximate Floorplans are for illustration purposes and may not be to scale.



WE'RE **SOLD** ON
YOUR FUTURE



Corum Clarkston & Netherlee
5 Helena Place, Clarkston, G76 7RB

Tel: 0141 648 6000

Email: clarkston@corumproperty.co.uk

www.corumproperty.co.uk