



**6 SEAFIELD DRIVE**

AYR

[www.corumproperty.co.uk](http://www.corumproperty.co.uk)





4 | BEDROOMS

2 | BATHROOMS

3 | PUBLIC ROOMS

**A substantial detached seafront villa with an idyllic position in Seafield, enjoying panoramic views out across the Firth of Clyde, spacious accommodation, private gardens & off road parking.**

Seafield Drive runs along the foreshore of Seafield in Ayr and is comprised of executive homes that have an enviable position facing directly out to sea and within walking distance of the town centre and Wellington School. Number 6 is an impressive detached villa formed over two levels that has stunning views from the front windows out to the Isle of Arran and the sea. There is flexible living accommodation that extends across seven main apartments with a downstairs WC, a utility/ shower room, a large fitted dining kitchen and an upstairs family bathroom suite. There is ample storage with a floored and lined attic space, a detached garage and ample off road parking with a sweeping driveway and private, low-maintenance garden grounds.

In more detail, the internal accommodation extends to an entrance vestibule, a welcoming hallway with stairs to the upper floor, a cloakroom leading to a WC, a spacious front facing lounge with ground floor sea views, a dining room/ sitting room, a downstairs double bedroom, under stairs storage, a fitted dining kitchen, a second WC, a utility area with a shower room suite and a conservatory with French doors leading out to the rear. On the upper floor there are two front facing double bedrooms with French windows and balconies allowing spectacular views out to sea, a third double bedroom, a family bathroom suite and a store with stairs to the floored and lined attic room.

Externally there is a sweeping driveway to the front, highlighted by decorative shrubs, that extends along the side to a detached garage, with an electric up-and-over door. There is gated access at the side round to a fully enclosed rear garden, with lawn, patio areas, decorative aggregate and mature trees.

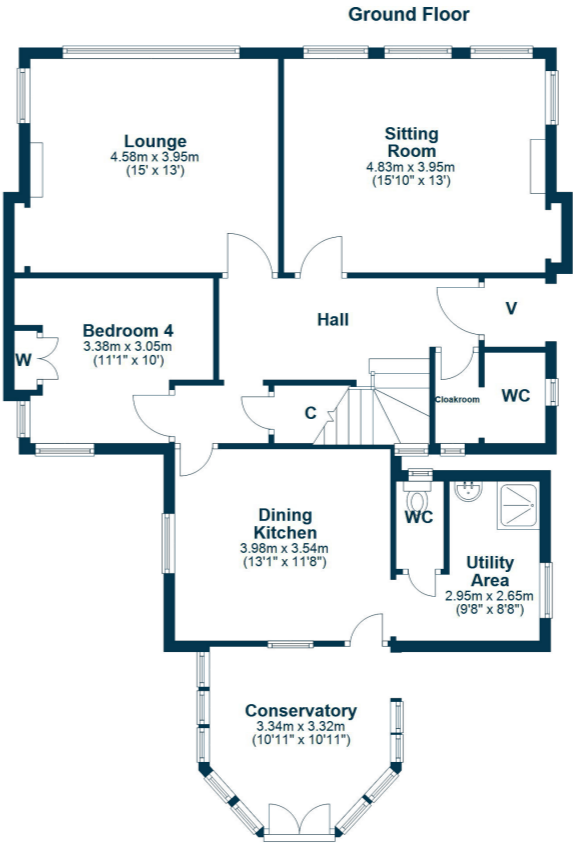










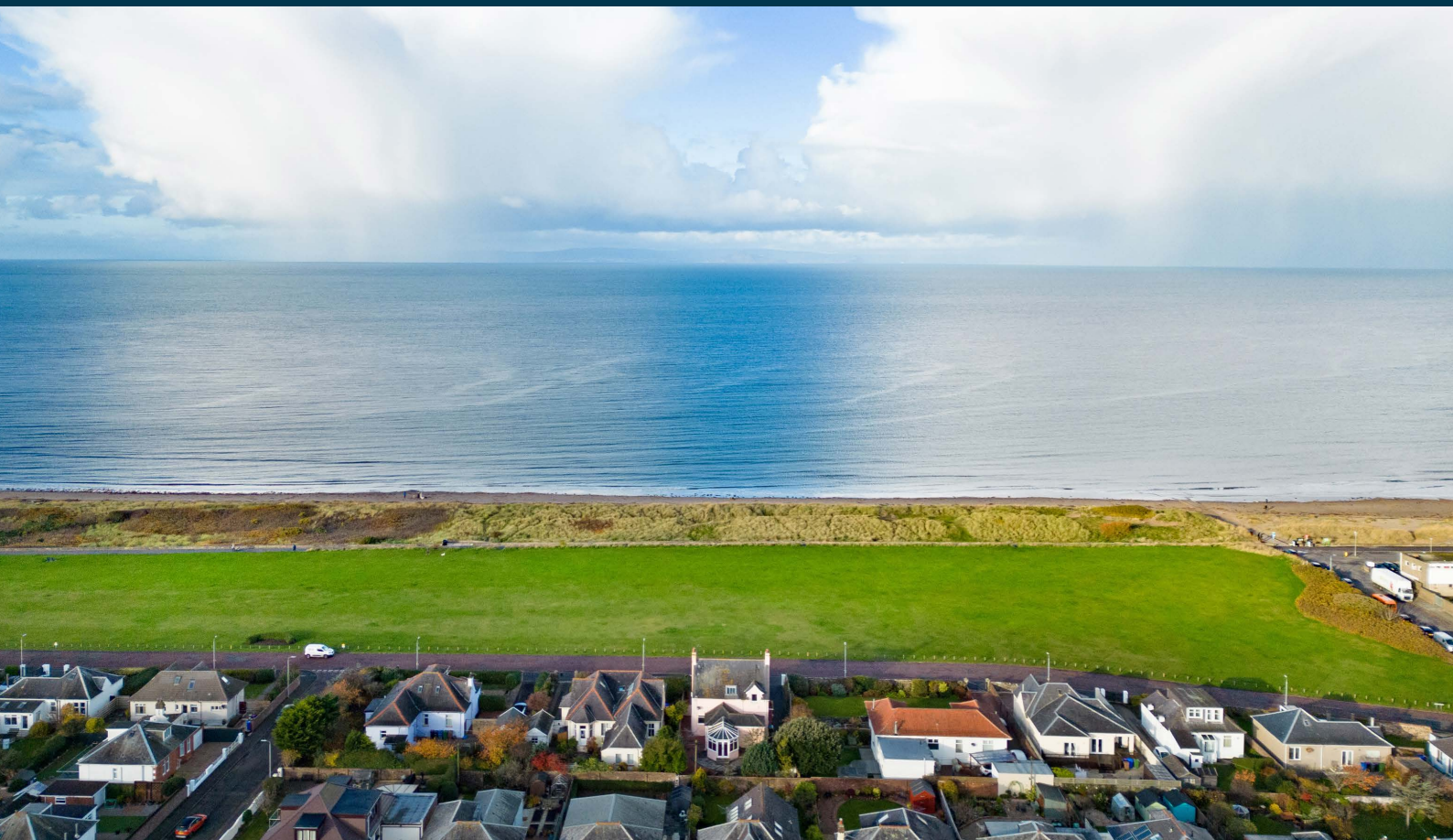


Seafield is a popular area of the market town of Ayr, which a comprehensive range of local amenities, including schools, shops, restaurants and bars, transport links to Glasgow and beyond, supermarket and leisure facilities. Wellington School and the seafront are within walking distance.

**AY4717** | Sat Nav: 6 Seafield Drive, Ayr, KA7 4BE

For the full home report visit [www.corumproperty.co.uk](http://www.corumproperty.co.uk)

\* All measurements and distances are approximate Floorplans are for illustration purposes and may not be to scale.



WE'RE **SOLD** ON  
YOUR FUTURE



Corum Ayr  
14 Beresford Terrace, Ayr, KA7 2EG

**Tel:** 01292 880 888

**Email:** [ayr@corumproperty.co.uk](mailto:ayr@corumproperty.co.uk)

[www.corumproperty.co.uk](http://www.corumproperty.co.uk)