



27 MEADOW RISE

NEWTON MEARNS

www.corumproperty.co.uk



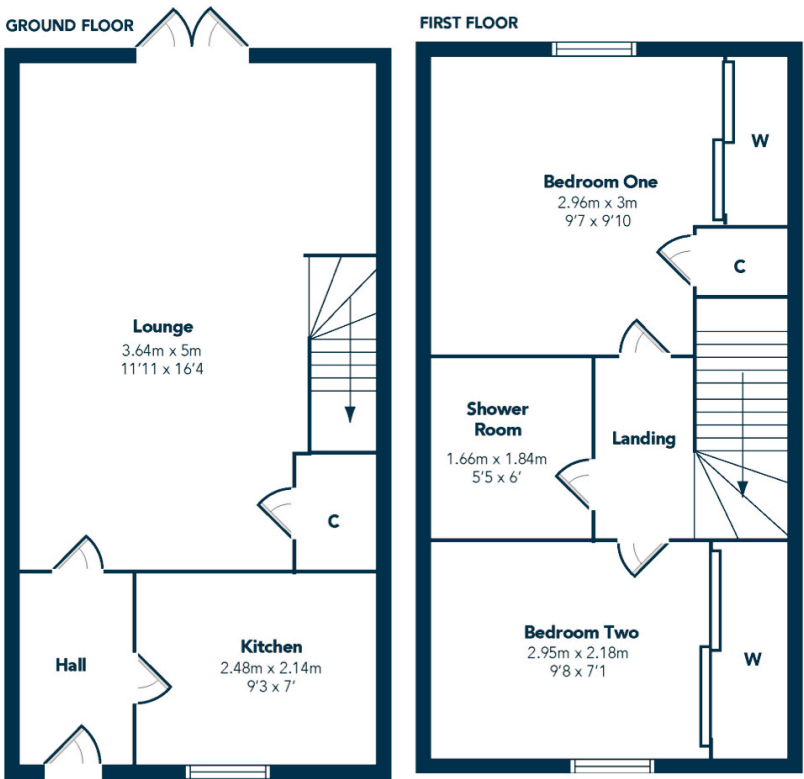
2 | BEDROOMS
1 | BATHROOM
1 | PUBLIC ROOM

A well-presented terraced villa set within a popular residential Newton Mearns development.

- Lovely, terraced villa
- Popular residential development
- Built by Mactaggart & Mickel
- Fantastic lounge/dining room
- Modern kitchen and shower room
- Private, level gardens
- Residents’ parking

Amenities

Newton Mearns is one of the most sought-after suburbs within the south side of Glasgow. The property is superbly placed for a wide range of amenities and indeed nationally recognised schooling. The property is a short distance away from excellent shopping at The Avenue at Mearns Cross and Greenlaw Village. There are an abundance of sports and recreational facilities found within the district which include excellent golf courses, parks, tennis clubs and there are a variety of country pursuits found nearby at Hazeldene. Local train stations include Patterson Station and Whitecraigs Station.



Sat Nav:
27 Meadow Rise, Newton Mearns, G77 6SE
NM4215
*All measurements and distances are approximate.
Floorplans are for illustration purposes and may not be to scale.

For the full home report visit
www.corumproperty.co.uk



WE'RE **SOLD** ON
YOUR FUTURE



Corum Newton Mearns
134 Ayr Road, Newton Mearns, G77 6EG

Tel: 0141 639 5888

Email: n.mearns@corumproperty.co.uk

www.corumproperty.co.uk