



**20 STEWARTON ROAD**

THORNLIEBANK

[www.corumproperty.co.uk](http://www.corumproperty.co.uk)





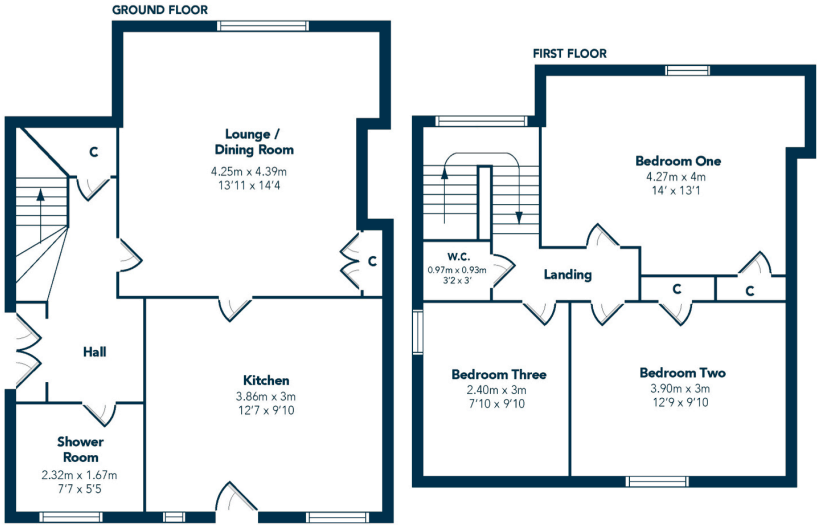
3 | BEDROOMS  
1 | BATHROOM  
1 | PUBLIC ROOM

A bright and beautifully proportioned semi-detached villa enjoying a popular Thornliebank location.

- Bright and spacious semi-detached villa.
- Off street parking
- Modern kitchen and bathroom
- Fully enclosed, private, westerly facing rear gardens.
- Certain to suit a variety of buyers.
- Excellent proximity to transport links, amenities and schooling.

Amenities

The property is perfectly placed for a variety of amenities which include Mearns Cross Shopping Centre which is a short drive away, Greenlaw Village which offers Waitrose and excellent further shopping facilities, nearby motorway links and Deaconsbank Golf course and Patterson Train Station are a short distance away. An abundance of sports and leisure facilities are available within East Renfrewshire including David Lloyd Sports Club, Whitecraigs Golf Club, Giffnock and Whitecraigs Tennis Clubs and Rouken Glen Park which was recently voted UK's Best Park of 2016.



Sat Nav:  
20 Stewarton Road, Thornliebank G46 7TD

NM4098

\*All measurements and distances are approximate.  
Floorplans are for illustration purposes and may not be to scale.

For the full home report visit  
[www.corumproperty.co.uk](http://www.corumproperty.co.uk)





WE'RE **SOLD** ON  
YOUR FUTURE



Corum Newton Mearns  
134 Ayr Road, Newton Mearns, G77 6EG

**Tel:** 0141 639 5888

**Email:** [n.mearns@corumproperty.co.uk](mailto:n.mearns@corumproperty.co.uk)

[www.corumproperty.co.uk](http://www.corumproperty.co.uk)