



7 ARGYLL VIEW

SKELMORLIE

www.corumproperty.co.uk





2 | BEDROOMS

2 | BATHROOMS

1 | PUBLIC ROOM

Located adjacent to the shore line in the popular coastal village of Skelmorlie and boasting superb coastal views from the spacious lounge, dining kitchen and broad external balcony, 7 Argyll View is a fabulous modern second floor apartment with an internal dimension seldom seen in modern developments.

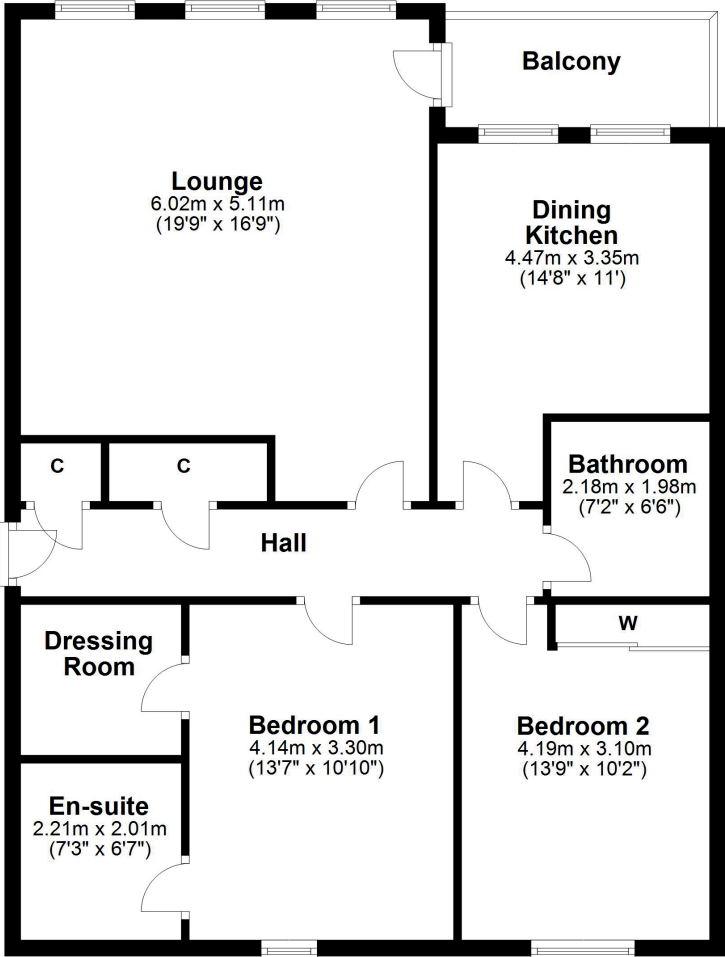
Accommodation comprises reception hallway, lounge, dining kitchen, two double bedrooms with the master enjoying an ensuite and walk in dressing room. There is also allocated parking and visitor parking within the grounds of the development. The property is well placed for ease of access to local amenities and for the commuter Wemyss Bay train terminal has a regular and direct service to Glasgow.

A well maintained communal entrance hallway entered via secure entry phone system gives both stair and lift access to the apartment. Upon entering, a reception hallway. The lounge is a bright spacious room with fabulous elevated views over the Firth of Clyde to Argyll, Bute and Arran in the west. The lounge has doorway access to a broad external balcony which also boasts superb views. The dining kitchen also has water views and is fitted with a range of wall and base units with integrated appliances. The property has two double bedrooms. The master bedroom has a walk in wardrobe and ensuite shower room with three piece suite to include WC, wash hand basin and a large walk in shower/ wet room. The guest bedroom has built in wardrobe storage. The bathroom is fitted with a three piece suite to include WC, wash hand basin and bath. In addition to the above the property has double glazing, gas central heating, allocated and visitor parking within the grounds of the development.









Largs is a popular holiday destination and is becoming increasingly popular for those looking for a seaside home in a town with a good range of amenities and recreational facilities. The Largs Academy Campus (built 2018) incorporates Early Years Learning, Largs Primary and St Mary's Primary as well as the highly regarded Largs Academy. Inverclyde, Scotland's National Sport's centre has also recently been refurbished. The area has excellent travel links including Largs railway station, bus routes and easy access to the major road networks. There are many restaurants and hotels in the area, with the yacht marina and seafront being an attraction for many. Prestwick and Glasgow Airport offer regular flights throughout Britain, Ireland and Europe.

LA1869 | Sat Nav: 7 Argyll View, Skelmorlie, PA17 5DB

For the full home report visit www.corumproperty.co.uk

* All measurements and distances are approximate Floorplans are for illustration purposes and may not be to scale.



WE'RE **SOLD** ON
YOUR FUTURE



Corum Largs
66 Main Street, Largs, KA30 8AL

Tel: 01475 675 001

Email: largs@corumproperty.co.uk

www.corumproperty.co.uk