



0/1, 13 LESLIE STREET

POLLOKSHIELDS

www.corumproperty.co.uk



3 | BEDROOMS
2 | BATHROOMS
1 | PUBLIC ROOM

A well appointed and spacious three bedroom ground floor flat boasting a private front garden.

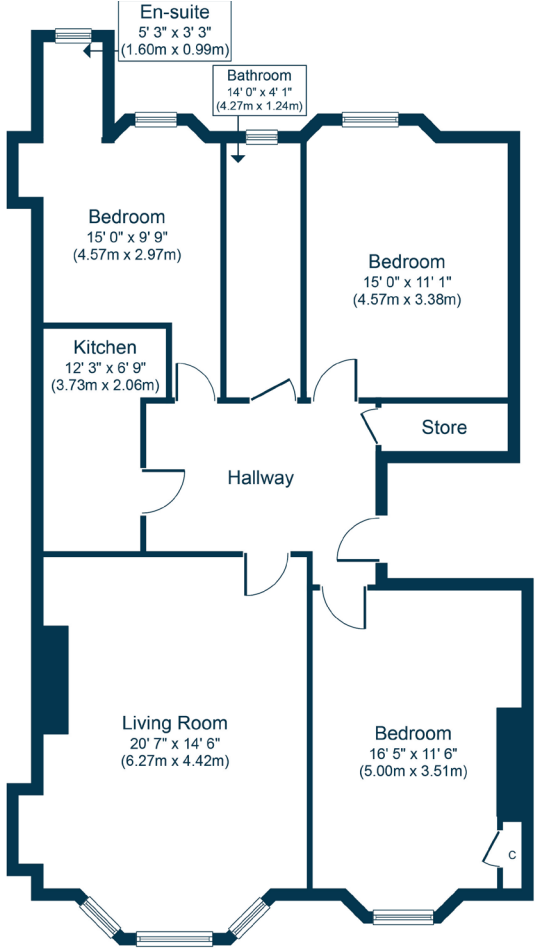
- Blonde sandstone building
- Bay window lounge
- Three double bedrooms
- Hallway with storage
- Bathroom and en-suite

Amenities

13 Leslie Street is within walking distance of popular shops and amenities upon Albert Drive or Nithsdale Road/Kildrostan Street where coffee shops, restaurants and delicatessens are available. Further amenities are also available on Pollokshaws Road a short walk away, as well as the Morrisons' store at Crossmyloof, the Sainsbury's metro store on Darnley Road or Silverburn shopping mall (5 mile drive).

Schooling is available locally at primary and secondary levels namely at Hutchesons' Grammar and Glendale Gaelic School.

Recreational pursuits are available locally at Maxwell Park, Queens Park or Pollok Country Park (all within two miles of the property). Train and bus connections are both in close proximity and Shields Road underground station is nearby offering a park & ride facility.



Sat Nav:
0/1, 13 Leslie Street, Pollokshields, G41 2LQ

SS4579

*All measurements and distances are approximate.
Floorplans are for illustration purposes and may not be to scale.

For the full home report visit
www.corumproperty.co.uk



WE'RE **SOLD** ON
YOUR FUTURE



Corum Shawlands
247 Kilmarnock Road, Shawlands, G41 3JF

Tel: 0141 636 7588

Email: shawlands@corumproperty.co.uk

www.corumproperty.co.uk