



**3 ST RONAN'S DRIVE**

WAVERLEY PARK

[www.corumproperty.co.uk](http://www.corumproperty.co.uk)





3 | BEDROOMS  
1 | BATHROOM  
2 | PUBLIC ROOMS

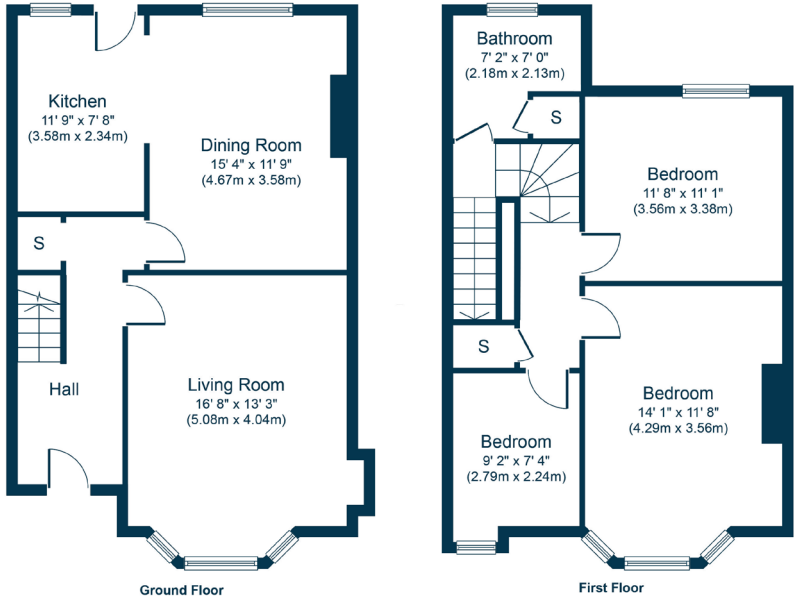
A superb mid terraced villa offering well laid out accommodation over two main levels with a modern specification and set within the Waverley Park district on Glasgow's Southside.

- Traditional mid terrace villa
- Large lounge with bay window
- Dining/sitting room open to modern kitchen
- Three good bedrooms and modern bathroom
- Private gardens with lane access to rear
- Gas central heating, double glazing / secondary glazing

Amenities

3 St Ronan's Drive is within walking distance of central Shawlands where coffee shops, restaurants, bars and delicatessens are available. More extensive amenities can be found at the Morrisons store at Crossmyloof, the Marks & Spencer store on Pollokshaws Road or the Silverburn shopping mall, a short drive to the South West.

Pollok Park, Maxwell Park and Queens Park are all within one mile of the front door providing outdoor recreational space. Queens Park in particular offers football pitches, & tennis courts. There are a number of regular bus routes on Kilmarnock Road and the local railway station at Shawlands is approximately 200 yards walk.



Sat Nav:  
3 St Ronan's Drive, Waverley Park, G41 3SJ

SS4586

\*All measurements and distances are approximate.  
Floorplans are for illustration purposes and may not be to scale.

For the full home report visit  
[www.corumproperty.co.uk](http://www.corumproperty.co.uk)





WE'RE **SOLD** ON  
YOUR FUTURE



Corum Shawlands  
247 Kilmarnock Road, Shawlands, G41 3JF

**Tel:** 0141 636 7588

**Email:** [shawlands@corumproperty.co.uk](mailto:shawlands@corumproperty.co.uk)

[www.corumproperty.co.uk](http://www.corumproperty.co.uk)