



9 AILSA VIEW WYND

AYR

www.corumproperty.co.uk





4 | BEDROOMS

2 | BATHROOMS

2 | PUBLIC ROOMS

A truly impressive detached family home with a wealth of accommodation, set in private gardens within a residential cul-de-sac close to Greenan shore.

Ailsa View Wynd is a quiet, established cul-de-sac, consisting of executive detached homes that are adjacent to Greenan Shore and just a short walk from the amenities of Doonfoot and Alloway village. Number 9 is a substantial detached villa that has flexible family accommodation and living space over two floors and six principal apartments, which is presented in walk-in condition throughout. There is a luxury en suite shower room off the master bedroom, a family bathroom, a downstairs WC, and a fitted kitchen with a separate utility room that is so sought-after by the modern family. The interior is also complimented perfectly by garden grounds that are landscaped to the front to create off road parking and a rear garden that is fully enclosed and laid mainly with lawn.

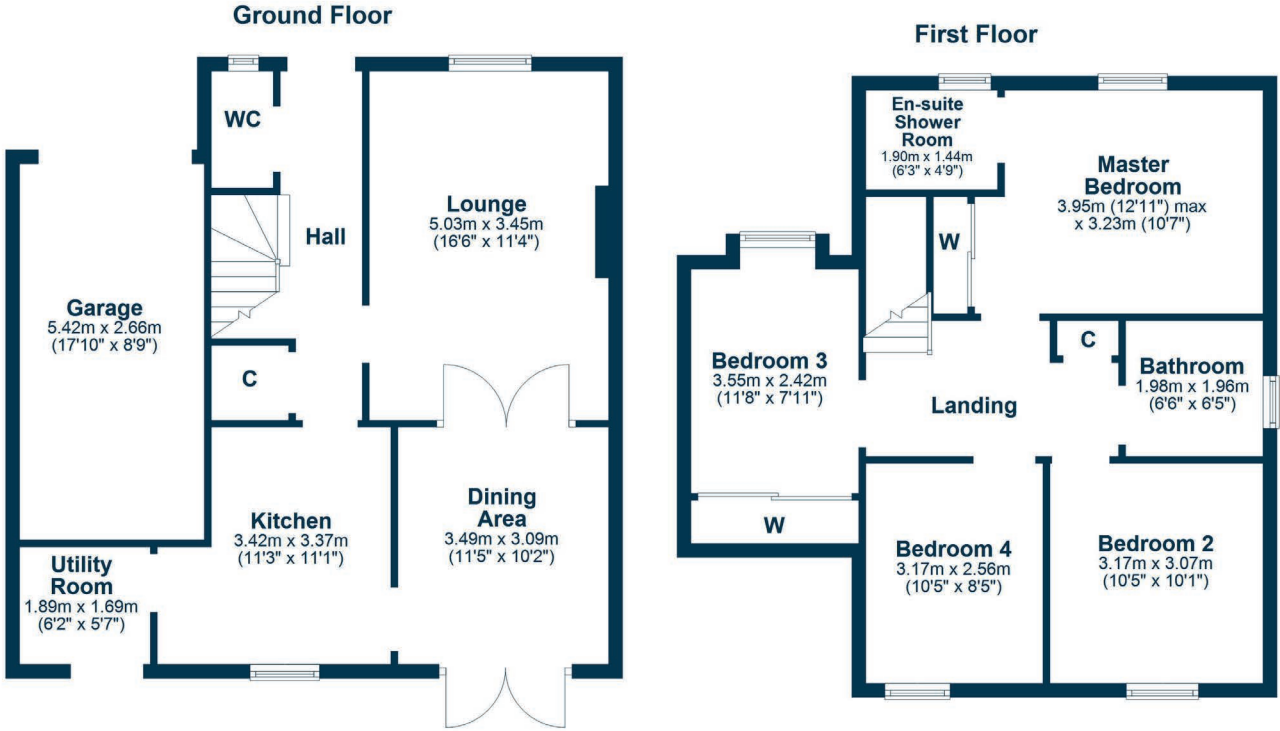
In more detail, the internal accommodation extends to an entrance hallway with an under stairs storage cupboard, a downstairs W.C, a spacious lounge with a feature fireplace and glass doors that lead into the dining room, which has patio doors out to the garden, a fitted kitchen and a separate utility room with a door to the rear. On the upper floor there is a landing with loft access and a storage cupboard, a master bedroom suite with a fitted wardrobe and an en suite shower room, three further double bedrooms and a family bathroom suite.

Externally the front garden has a monoblock paved driveway, lawn, access into the integral garage and gated access at the side round to a fully enclosed rear garden, which wraps around the side and has a paved patio area, a lawn and shrubs.









Ailsa View Wynd is a quiet residential cul-de-sac forming part of a popular development by MacTaggart & Mickel on the preferred south side of Ayr bordered by rolling countryside and within close proximity to Greenan Shore. There are a number of amenities within close proximity including an excellent primary school, shops and Belleisle Park. Ayr town centre is around three miles distant and provides a more comprehensive range of amenities.

AY4758 | Sat Nav: 9 Ailsa View Wynd, Ayr, KA7 4JZ

For the full home report visit www.corumproperty.co.uk

* All measurements and distances are approximate Floorplans are for illustration purposes and may not be to scale.



WE'RE **SOLD** ON
YOUR FUTURE



Corum Ayr
14 Beresford Terrace, Ayr, KA7 2EG

Tel: 01292 880 888

Email: ayr@corumproperty.co.uk

www.corumproperty.co.uk