



**FLAT 1/2, 5 MILLBRAE CRESCENT**  
LANGSIDE

[www.corumproperty.co.uk](http://www.corumproperty.co.uk)





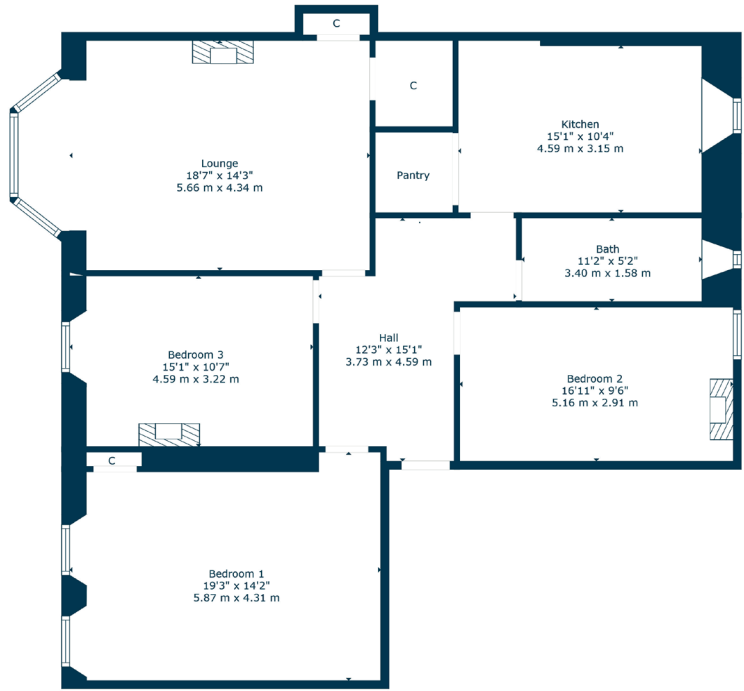
3 | BEDROOMS  
1 | BATHROOM  
1 | PUBLIC ROOM

A particularly bright first floor townflat offering generous accommodation with a flexible layout and set within the Millbrae conservation area.

- Bright first floor townflat
- Three generous double bedrooms
- Large lounge and fitted dining sized kitchen
- Contemporary bathroom suite
- Double glazed window units
- Quiet conservation neighbourhood

Amenities

5 Millbrae Crescent is within walking distance of an abundance of amenities whilst Newlands Park and Queens Park are within one mile of the front door. The local railway station at Langside is on the Cathcart Circle line, a 5 stop journey into central station. The M77 and M74 both connect the Southside of Glasgow to Scotland's motorway network.



Sat Nav:  
Flat 1/2, 5 Millbrae Crescent, Langside, G42 9UW

SS4616

\*All measurements and distances are approximate.  
Floorplans are for illustration purposes and may not be to scale.

For the full home report visit  
[www.corumproperty.co.uk](http://www.corumproperty.co.uk)





WE'RE **SOLD** ON  
YOUR FUTURE



Corum Shawlands  
247 Kilmarnock Road, Shawlands, G41 3JF

**Tel:** 0141 636 7588

**Email:** [shawlands@corumproperty.co.uk](mailto:shawlands@corumproperty.co.uk)

[www.corumproperty.co.uk](http://www.corumproperty.co.uk)