



32 LADYWELL ROAD
MAYBOLE

www.corumproperty.co.uk





2 | BEDROOMS

1 | BATHROOM

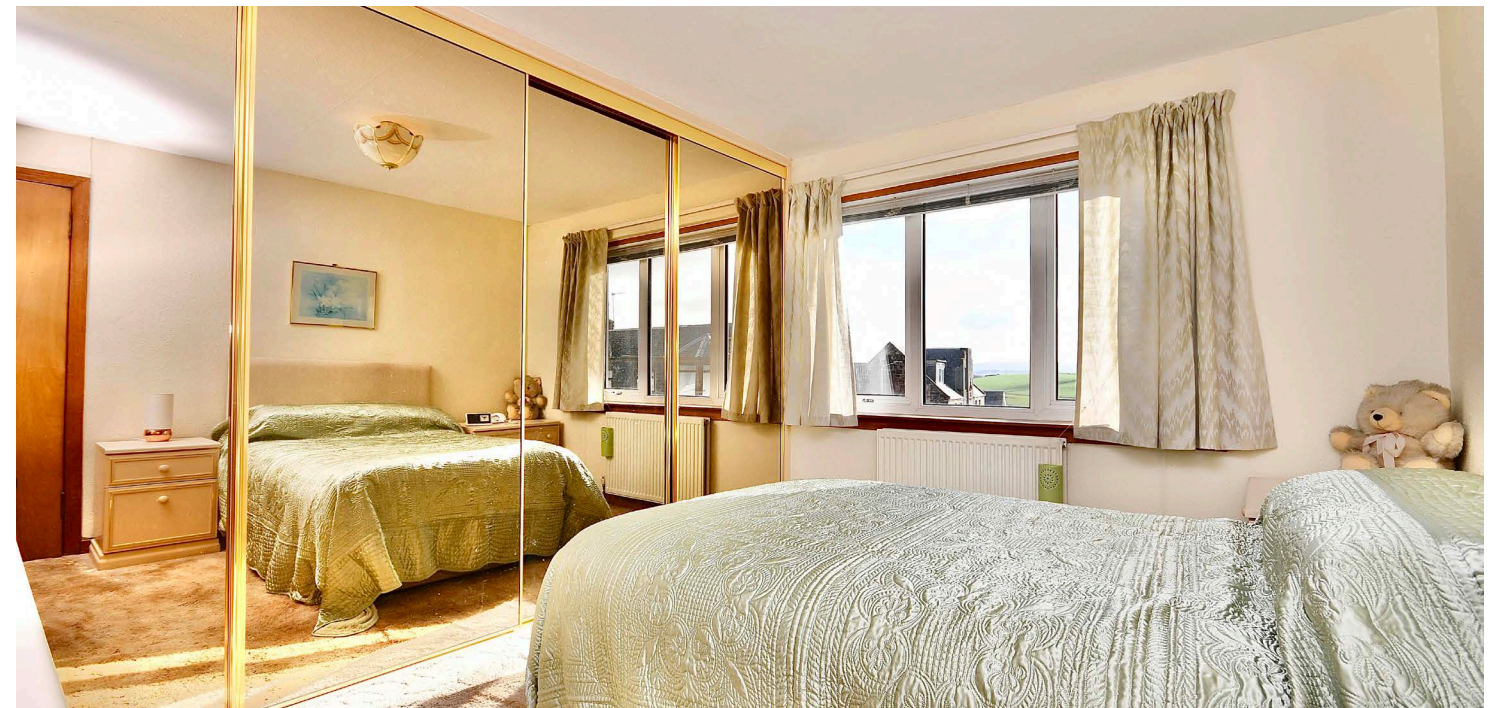
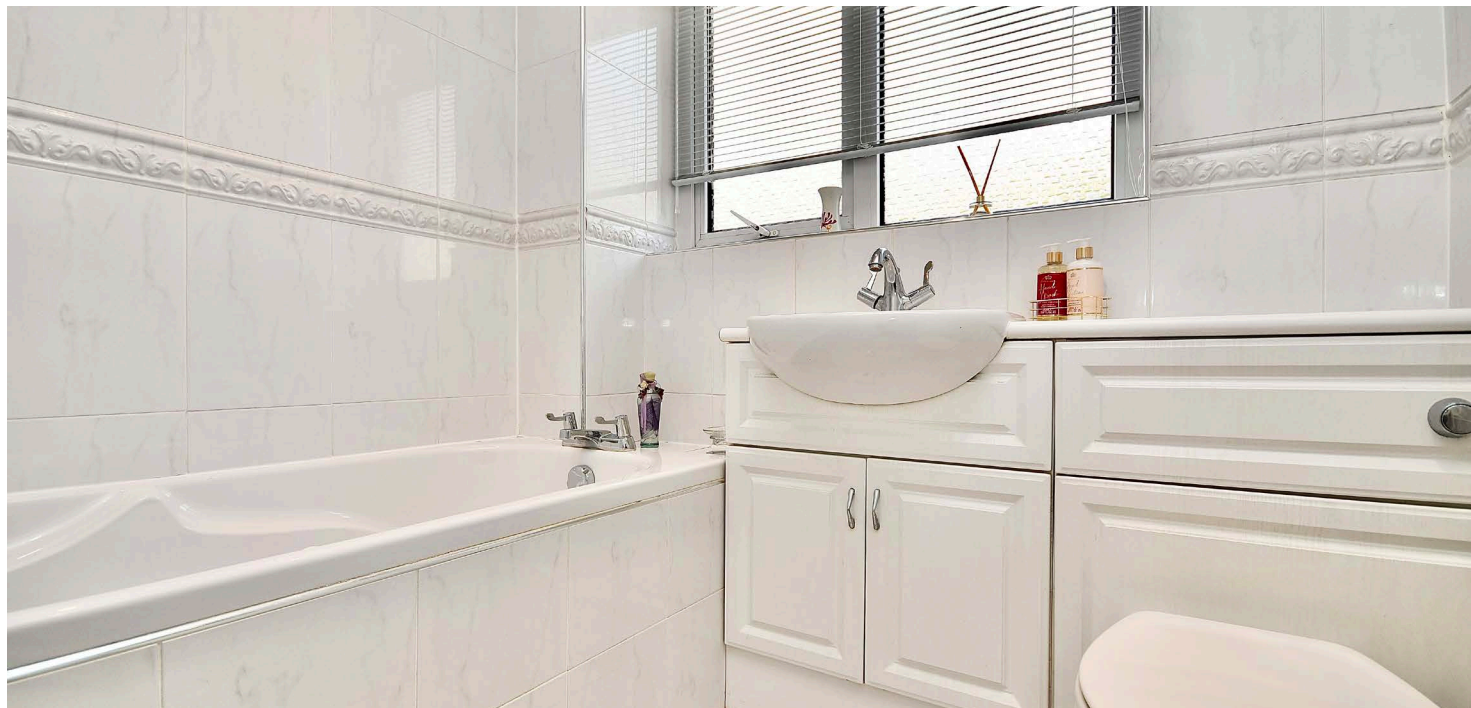
1 | PUBLIC ROOM

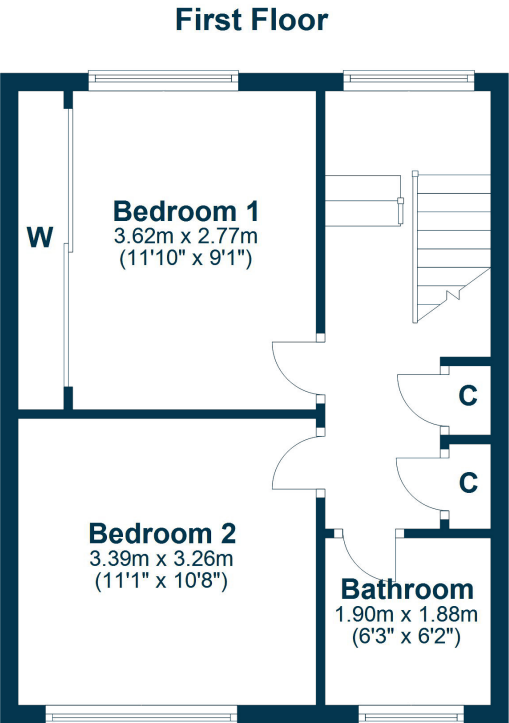
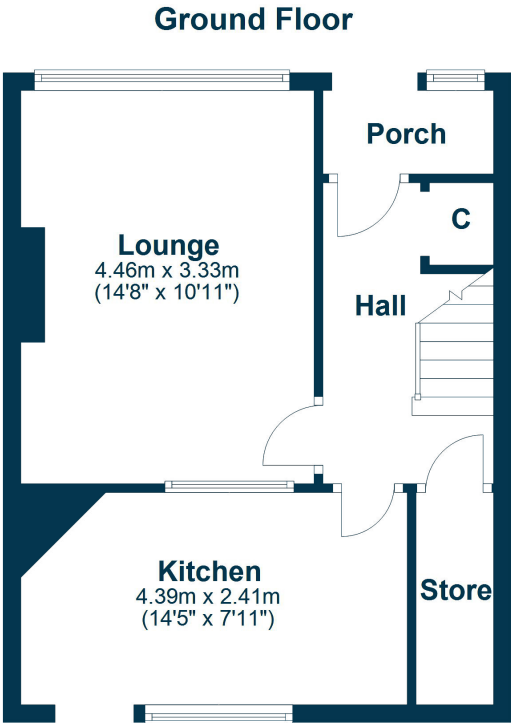
A truly spacious mid terraced family villa set in the popular town of Maybole, with ample storage and low-maintenance garden grounds.

32 Ladywell Road is an excellent example of a family home that offers to the market a generous amount of accommodation and living space that will suit a range of potential buyers. There is ample storage throughout, with the addition of a brick store at the rear, and there is plenty of on street parking. The property also has low maintenance garden grounds to the front and rear, and partial views across rolling Ayrshire countryside, the Corserine, Cairnmore of Carsphairn, Meul and other local natural landmarks.

In more detail, the internal accommodation extends to an entrance porch, a hallway with under stairs storage and a large walk-in store, a spacious lounge to the front and a large breakfasting kitchen with ample wall and base units and a door to the rear. On the upper floor there is loft access, two storage cupboards off the landing, a fitted family bathroom suite and two large double bedrooms, both with fitted wardrobes.

Externally the gardens to the front are enclosed with decorative pebbles, a paved pathway and decorative shrub borders. The rear garden is fully enclosed, also with decorative aggregate, a large brick store and shrubs.





Maybole is a popular town, with a range of local amenities, located just 7 miles from the market town of Ayr, which offers a comprehensive range of amenities including excellent schooling, retail shopping and leisure facilities. The A77 links via the M77 to Glasgow and Ladywell Road is within walking distance of Maybole train station, which also links to Ayr, Glasgow and beyond. South Ayrshire is home to some of the world's finest golf courses and resorts, including the nearby Trump Turnberry and Royal Troon, both hosts of the Open Championship. Prestwick International Airport is only 16 miles away, with flights to many destinations throughout Europe.

AY4809 | Sat Nav: 32 Ladywell Road, Maybole, KA19 7BE

For the full home report visit www.corumproperty.co.uk

* All measurements and distances are approximate Floorplans are for illustration purposes and may not be to scale.



WE'RE **SOLD** ON
YOUR FUTURE



Corum Ayr
10 Beresford Terrace, Ayr, KA7 2EG

Tel: 01292 880 888

Email: ayr@corumproperty.co.uk

www.corumproperty.co.uk