



## 42 BEAUFORT GARDENS

BISHOPBRIGGS

[www.corumproperty.co.uk](http://www.corumproperty.co.uk)







**3 | BEDROOMS**

**2 | BATHROOMS**

**3 | PUBLIC ROOMS**

**This bright and spacious professionally extended semi-detached villa is located in a popular area of Bishopbriggs, on a quiet residential road and close to local amenities. The property offers spacious and flexible family living including semi open plan kitchen and dining or family room, and utility.**

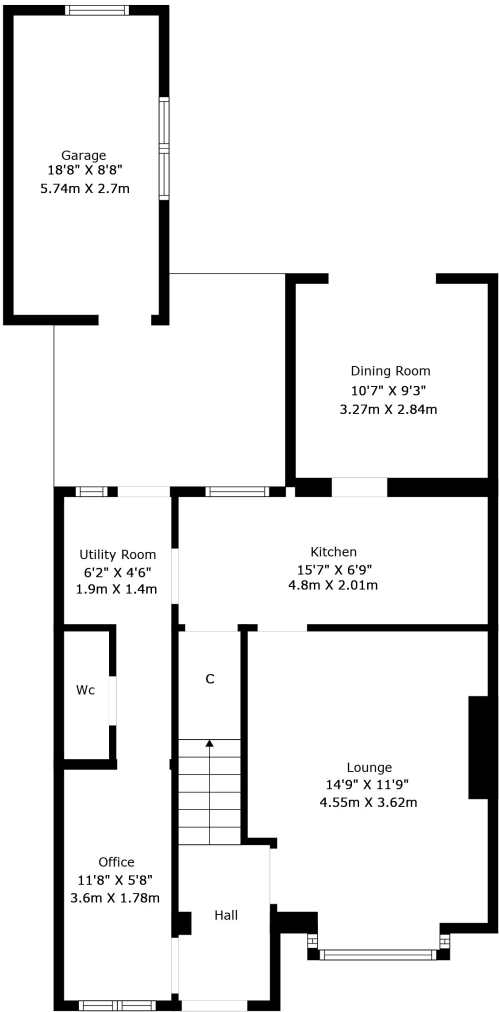
The accommodation comprises; reception hall, a well-proportioned lounge to the front of the property featuring a large window, modern kitchen with large pantry storage cupboard, a semi open plan dining room to the rear with access out to the rear garden, utility room off kitchen with rear door access, downstairs shower room, and flexible home office or fourth bedroom. Stairs lead up to the upper landing where there are three good sized bedrooms, and a main bathroom with three-piece suite and shower over bath.

Externally, the property benefits from a generous gravelled driveway with space for two vehicles, a detached single garage with power, large timber shed, and enclosed level rear garden. The garden is a mix of lawn and decked area offering space for garden furniture.

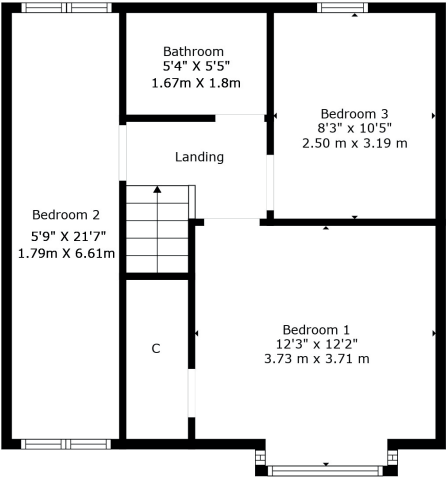








Floor 1



Floor 2

Bishopbriggs offers a wealth of local amenities, including schools, at both primary and secondary levels, recreational facilities, supermarkets, shops, golf courses and a host of popular bars and restaurants. Bishopbriggs train station offers a regular service to both Glasgow and Edinburgh and there are nearby road links giving easy access to Glasgow City Centre and the central belt motorway network.

**BD3628** | Sat Nav: 42 Beaufort Gardens, Bishopbriggs, G64 2DJ

For the full home report visit [www.corumproperty.co.uk](http://www.corumproperty.co.uk)

\* All measurements and distances are approximate Floorplans are for illustration purposes and may not be to scale.





WE'RE **SOLD** ON  
YOUR FUTURE



Corum Bearsden  
1 Canniesburn Toll, Bearsden, G61 2QU

**Tel:** 0141 942 5888

**Email:** bearsdenenq@corumproperty.co.uk

[www.corumproperty.co.uk](http://www.corumproperty.co.uk)