



**56 RIVERSIDE PARK**

NETHERLEE

[www.corumproperty.co.uk](http://www.corumproperty.co.uk)



2 | BEDROOMS

1 | SHOWER ROOM

1 | EN-SUITE

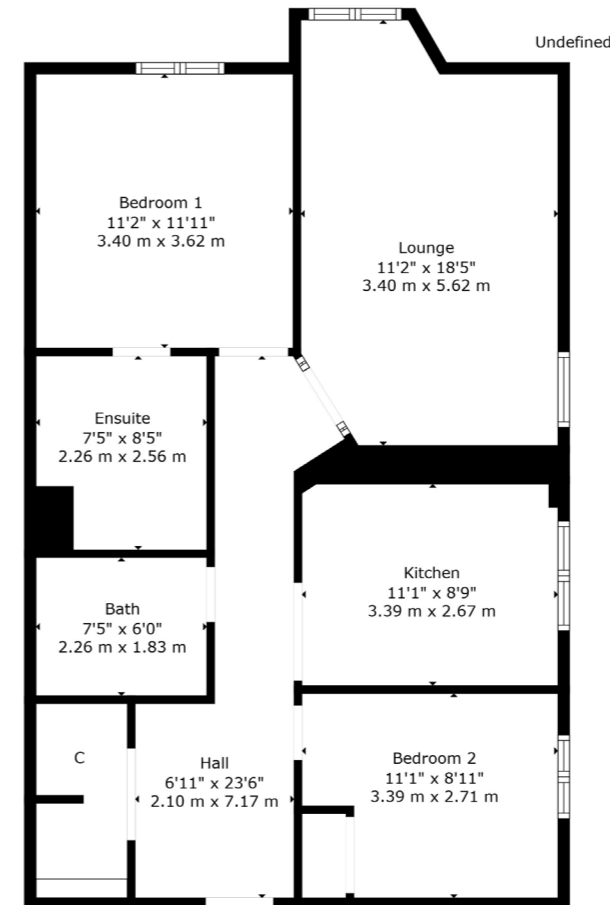
1 | PUBLIC ROOM

A lovely first floor apartment set within a popular residential development.

- Popular development
- Preferred first floor position.
- Well-presented throughout
- Principal ensuite bedroom
- Dual aspect lounge/dining room
- Residents parking
- Well maintained grounds

#### Amenities

Netherlee is one of East Renfrewshire's most sought-after residential suburbs and is a haven for young growing families enjoying access to some of the best schooling within the local area. There is a full range of independent retailers including cafes and restaurants, and the district provides swift access via both road and rail to the city centre and beyond. There is a variety of places of worship found within the surrounding area and an array of sports and leisure activities including local parks, health clubs, gyms and golf courses close to hand in addition to equestrian pursuits.



Sat Nav:  
56 Riverside Park, Netherlee, G44 3PG

CC0754

\*All measurements and distances are approximate.  
Floorplans are for illustration purposes and may not be to scale.

For the full home report visit  
[www.corumproperty.co.uk](http://www.corumproperty.co.uk)



WE'RE **SOLD** ON  
YOUR FUTURE



Corum Clarkston & Netherlee  
5 Helena Place, Clarkston, G76 7RB

Tel: 0141 648 6000

Email: [clarkston@corumproperty.co.uk](mailto:clarkston@corumproperty.co.uk)

[www.corumproperty.co.uk](http://www.corumproperty.co.uk)