



1/1 209 CROW ROAD

BROOMHILL

www.corumproperty.co.uk





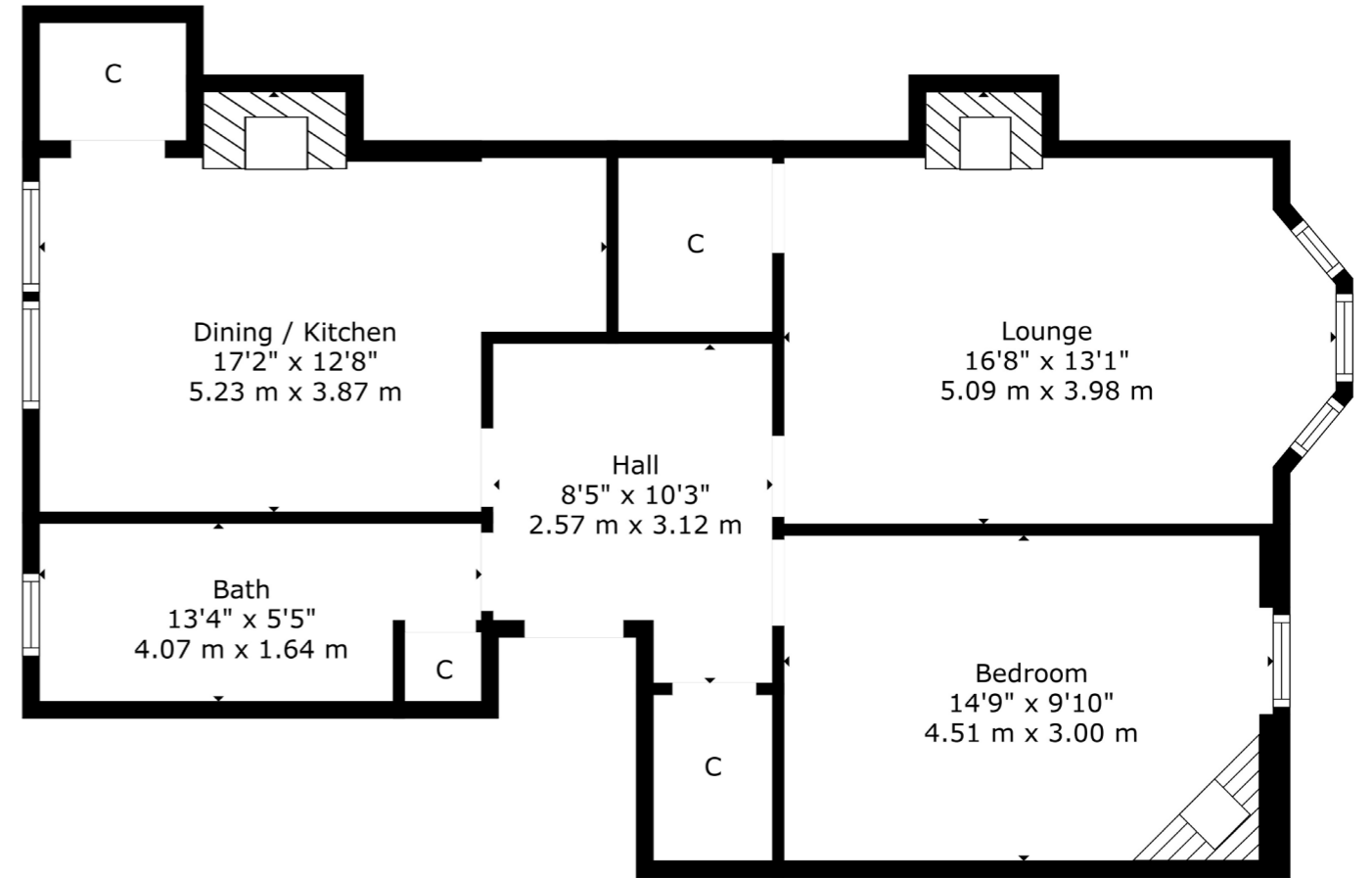
- 1 | BEDROOM
- 1 | BATHROOM
- 1 | PUBLIC ROOM

209 Crow Road is a bright and spacious one bedroom apartment situated on the preferred first floor of this well-maintained red sandstone tenement building.

Located in the ever-popular Broomhill area, the internal accommodation comprises: entrance vestibule, welcoming reception hallway with large storage cupboard and access off to all apartments, bright bay windowed lounge to the front with feature fireplace, spacious storage cupboard and open outlook, an excellent sized dining kitchen boasting a range of base and wall mounted units and ample space for dining. There is a generously spacious double bedroom to the front with ample space for free standing storage and a well-appointed modern shower room with three piece suite, completes the accommodation on offer.

In addition, the property benefits from gas central heating, double glazed windows and a well-kept communal garden to the rear.





Broomhill is a beautiful, leafy district in the West End of Glasgow bounded by the districts of Thornwood and Partick to the south, Hyndland to the east, and Jordanhill, Scotstoun and Victoria Park to the west.

Broomhill Primary School is the main feeder school to the state secondary schools in the area, Hyndland Secondary and St Thomas Aquinas.

Broomhill has its own shopping centre located on Broomhill Drive, with shops including a newsagent, a laundrette, Papa John's, a dental surgery, Boots and Co-op convenience store. There are also a large number of shops on Crow Road, including cafés and restaurants such as Café Circa, Kothel, The Marlborough and Wee Patee. There is a retail park on Crow Road where a number of national retailers can be found including Marks & Spencer, Sainsburys, Boots, Superdrug and Argos. A further selection of shops and amenities can be found on Clarence Drive, Hyndland Road and Byres Road.

WE4989 | Sat Nav: 209 Crow Road, Broomhill, G11 7PY

For the full home report visit www.corumproperty.co.uk

* All measurements and distances are approximate Floorplans are for illustration purposes and may not be to scale.



WE'RE **SOLD** ON
YOUR FUTURE



Corum West End
82 Hyndland Road, Glasgow, G12 9UT

Tel: 0141 357 1888

Email: westendnq@corumproperty.co.uk

www.corumproperty.co.uk