



26 PAIDMYRE ROAD

NEWTON MEARNS

www.corumproperty.co.uk





4/5 | BEDROOMS

2 | BATHROOMS

1/2 | PUBLIC ROOMS

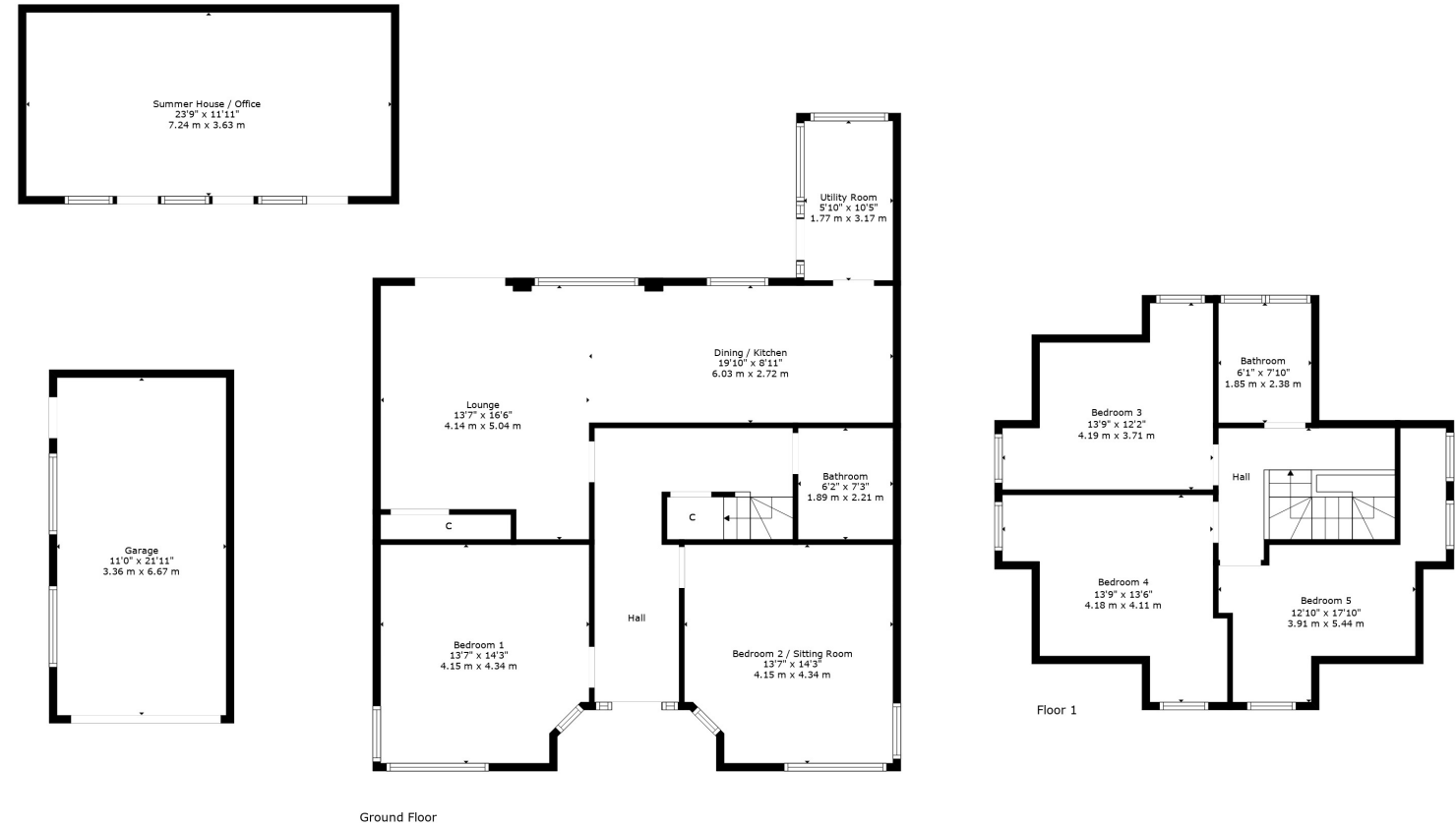
An impressive, detached family home set within private garden grounds.

This traditional detached bungalow has been refurbished, extended and upgraded by the present owners to deliver a fantastic family home. Set within private, level garden grounds and enjoying a sought after Newton Mearns address, the subjects offer a great opportunity to the local marketplace.

The ground floor accommodation extends to traditional style reception hallway, generous formal lounge to front, spacious front facing bedroom or formal dining room, reconfigured rear facing family room open plan to dining kitchen with a range of wall and base mounted units, separate laundry/utility room and access via French doors to gardens at rear. The ground floor is completed by main family bathroom. Upstairs a bright and spacious landing area gives access to three good double bedrooms, and stylish shower room. The specification includes a system of gas central heating, double glazing, and overall, the subjects are well presented and decorated throughout.

Externally the property is set within private, level garden grounds which are designed for ease of maintenance with lawn and deck areas. Detached garage fitted with power and light. Fantastic external summer house/ office clad with Siberian lark, fitted with power and light, and clearly this space could be used for a variety of purposes. Monoblock driveway to front set behind electric gates and providing ample vehicular parking.





Newton Mearns is one of the most sought-after suburbs within the south side of Glasgow. The property is superbly situated for a wide range of amenities and indeed nationally recognised schooling. The property is a short distance away from excellent shopping at The Avenue at Mearns Cross and Greenlaw Village. There are an abundance of sports and recreational facilities found within the district which include excellent golf courses, parks, tennis clubs and there are a variety of country pursuits. Local train stations include Whitecraigs Station and Patterton Station.

NM4333 | Sat Nav: 26 Paidmyre Road, Newton Mearns, G77 5AJ

For the full home report visit www.corumproperty.co.uk

* All measurements and distances are approximate Floorplans are for illustration purposes and may not be to scale.



WE'RE **SOLD** ON
YOUR FUTURE



Corum Newton Mearns
134 Ayr Road, Newton Mearns, G77 6EG

Tel: 0141 639 5888

Email: n.mearns@corumproperty.co.uk

www.corumproperty.co.uk