



188 CLARKSTON ROAD
MUIREND

www.corumproperty.co.uk



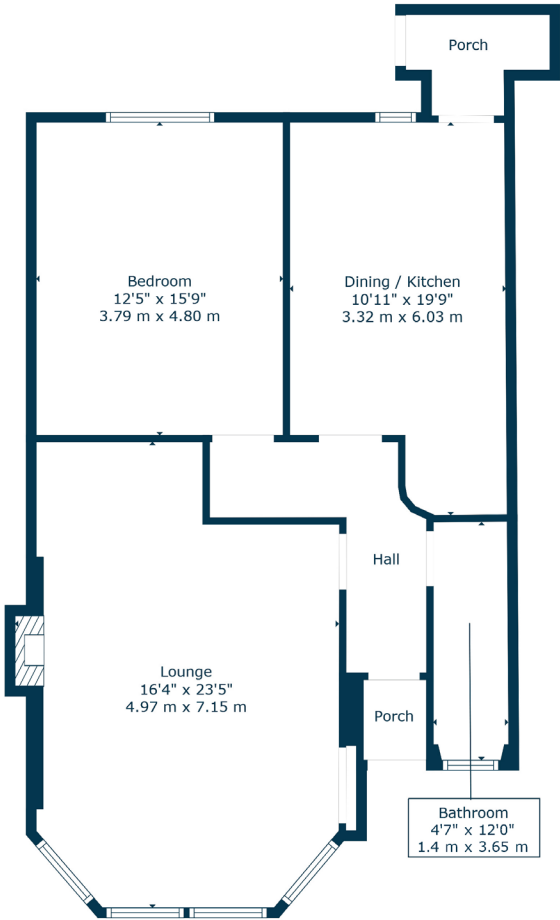
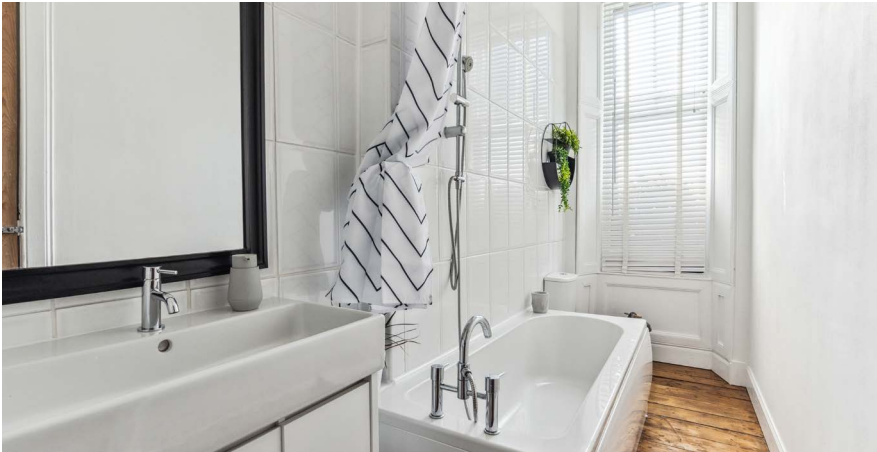
1 | BEDROOM
1 | BATHROOM
1 | PUBLIC ROOM

Occupying a level main door position in an attractive sandstone terrace, this one bedroom flat is presented to market in turnkey condition. The property is on the doorstep of thriving amenities, Linn Park and various public transport options.

- Delightful ground floor main door flat
- Double sized bedroom
- Modern fitted dining sized kitchen
- Sash Windows & gas central heating
- Contemporary three-piece bath room
- Benefits from a Yale Alarm System

Amenities

188 Clarkston Road is in close proximity to thriving shops, bars, coffee houses and restaurants. Linn Park is less than 500 yards away whilst Newlands Tennis Club and Newlands Park are within one mile. Clarkston Road has various bus services and Muirend train station is also within 500 yards, served by the Neilston line into Glasgow Central.



Sat Nav:
188 Clarkston Road, Muirend, G44 3DN

SS4726

*All measurements and distances are approximate.
Floorplans are for illustration purposes and may not be to scale.

For the full home report visit
www.corumproperty.co.uk



WE'RE **SOLD** ON
YOUR FUTURE



Corum Shawlands
247 Kilmarnock Road, Shawlands, G41 3JF

Tel: 0141 636 7588
Email: shawlands@corumproperty.co.uk

www.corumproperty.co.uk