



0/2, 99 SOMERVILLE DRIVE

MOUNT FLORIDA

www.corumproperty.co.uk



2 | BEDROOMS
1 | BATHROOM
1 | PUBLIC ROOM

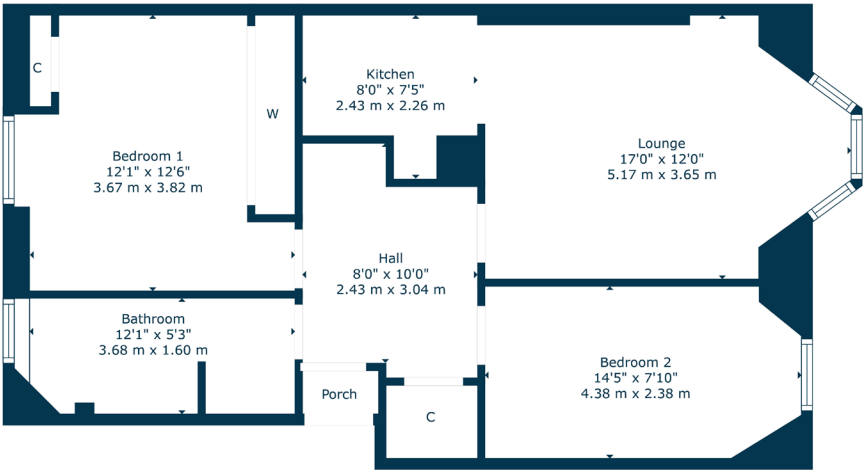
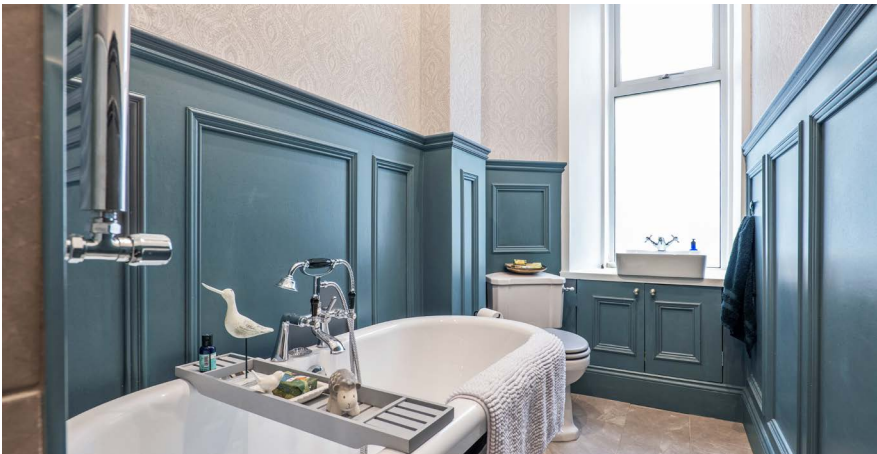
Occupying a convenient position in this central Mount Florida address, this lovely flat delivers well-proportioned accommodation and a stunning internal finish. Originally dating from the turn of the 19th Century, the property has been upgraded in recent years and is very well cared for by our client.

- Convenient ground floor position
- Bay windowed living room open plan to contemporary styled fitted kitchen
- Two double bedrooms
- Double glazed and gas central heating
- Private front garden

Amenities

99 Somerville Drive is positioned within minutes walk of local shops and amenities including wide choice of cafes on Cathcart Road and Battlefield Road, whilst more extensive amenities are available within central Shawlands, the 24-hour Asda Store on Prospecthill Road or the Morrisons store at Crossmyloof. Queens Park is a short distance away providing recreational space as well as tennis courts and all-weather football pitches.

Frequent public transport services provide rapid commuter access to the city centre, the local railway station at Mount Florida is approximately half a mile away.



Sat Nav:
99 Somerville Drive, Mt Florida, G42 9BH

SS4728

*All measurements and distances are approximate.
Floorplans are for illustration purposes and may not be to scale.

For the full home report visit
www.corumproperty.co.uk



WE'RE **SOLD** ON
YOUR FUTURE



Corum Shawlands
247 Kilmarnock Road, Shawlands, G41 3JF

Tel: 0141 636 7588

Email: shawlands@corumproperty.co.uk

www.corumproperty.co.uk