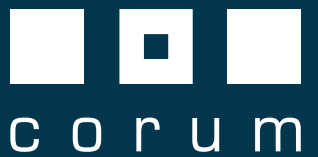




37A AYTOUN ROAD

POLLOKSHIELDS

www.corumproperty.co.uk



3 | BEDROOMS
1 | BATHROOM
1 | PUBLIC ROOM

An impressive upper conversion of a handsome detached villa that is one of only two properties in the building, with off street parking and direct access to expansive private gardens.

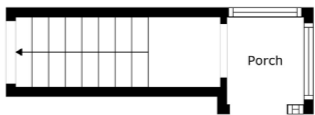
- Upper conversion of detached villa
- Ground floor porch to staircase
- Large lounge with focal fireplace
- Impressive dining kitchen
- Three well proportioned bedrooms
- Expansive and well stocked gardens to the rear
- Driveway parking for multiple cars

Amenities

37a Aytoun Road is within walking distance of popular local shops, restaurants and delicatessens upon Nithsdale Road or Kildrostan Street. More extensive facilities are available at the Morrisons store at Crossmyloof or Silverburn shopping mall, a short drive to the West. Both Maxwell Park and Pollok Park are within one mile of the front door, whilst the local railway station at Maxwell Park is easily accessible, as is Shields Road underground.



Floor 1



Ground Floor

Sat Nav:
37 Aytoun Road, Pollokshields, G41 5HW

SS4731

*All measurements and distances are approximate.
Floorplans are for illustration purposes and may not be to scale.

For the full home report visit
www.corumproperty.co.uk



WE'RE **SOLD** ON
YOUR FUTURE



Corum Shawlands
247 Kilmarnock Road, Shawlands, G41 3JF

Tel: 0141 636 7588

Email: shawlands@corumproperty.co.uk

www.corumproperty.co.uk