



3/1 287 CROW ROAD

BROOMHILL

www.corumproperty.co.uk





VIRTUALLY STAGED

2 | BEDROOMS

1 | BATHROOM

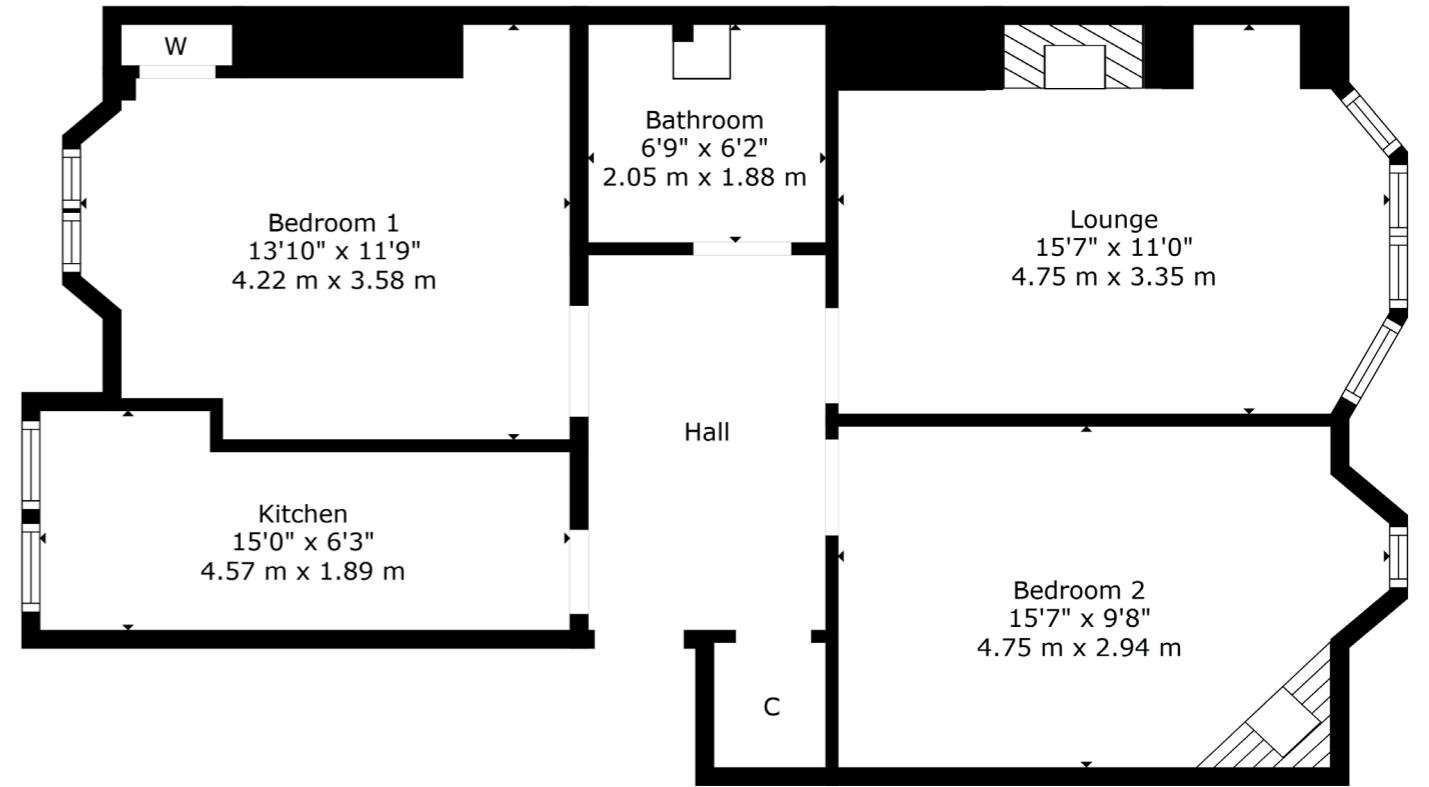
1 | PUBLIC ROOM

287 Crow Road is a bright and spacious two bedroom apartment situated on the top (third) floor of this well-maintained red sandstone tenement building.

Located in the ever-popular Broomhill area, the internal accommodation comprises; welcoming reception hallway with large storage cupboard and access off to all apartments, bright bay windowed lounge to the front with feature fireplace, an excellent sized galley style kitchen boasting a range of base and wall mounted units and integrated appliances. There are two spacious double bedrooms, both offering ample space for free standing storage and a well-appointed modern shower room with three piece suite and shower over bath, which completes the accommodation on offer.

In addition, the property benefits from gas central heating, single glazed windows, a plethora of period features including stain glass, feature fireplace, wooden flooring and cornice work. Additionally, to the rear of the property, there is a well-kept communal garden.





Broomhill is a beautiful, leafy district in the West End of Glasgow bounded by the districts of Thornwood and Partick to the south, Hyndland to the east, and Jordanhill, Scotstoun and Victoria Park to the west.

Broomhill Primary School is the main feeder school to the state secondary schools in the area, Hyndland Secondary and St Thomas Aquinas.

Broomhill has its own shopping centre located on Broomhill Drive, with shops including a newsagent, a laundrette, Papa John's, a dental surgery, Boots and Co-op convenience store. There is also a large number of shops on Crow Road, including cafés and restaurants such as Café Circa, Kothel, The Marlborough and Wee Paree. There is a retail park on Crow Road where a number of national retailers can be found including Marks & Spencer, Sainsburys, Boots, Superdrug and Argos. A further selection of shops and amenities can be found on Clarence Drive, Hyndland Road and Byres Road.

Public transport is available by bus, rail and underground, with a bus service operating on Broomhill Drive and Crow Road, railway stations at Hyndland and Partick and an underground station at Partick. There are also good road links to the City Centre, Glasgow International Airport and beyond.

WE5046 | Sat Nav: 287 Crow Road, Broomhill, G11 7BQ

For the full home report visit www.corumproperty.co.uk

* All measurements and distances are approximate Floorplans are for illustration purposes and may not be to scale.



WE'RE **SOLD** ON
YOUR FUTURE



Corum West End
82 Hyndland Road, Glasgow, G12 9UT

Tel: 0141 357 1888

Email: westendnq@corumproperty.co.uk

www.corumproperty.co.uk