



**3/1 958 SAUCHIEHALL STREET**  
FINNIESTON

[www.corumproperty.co.uk](http://www.corumproperty.co.uk)





**2 | BEDROOMS**

**1 | BATHROOM**

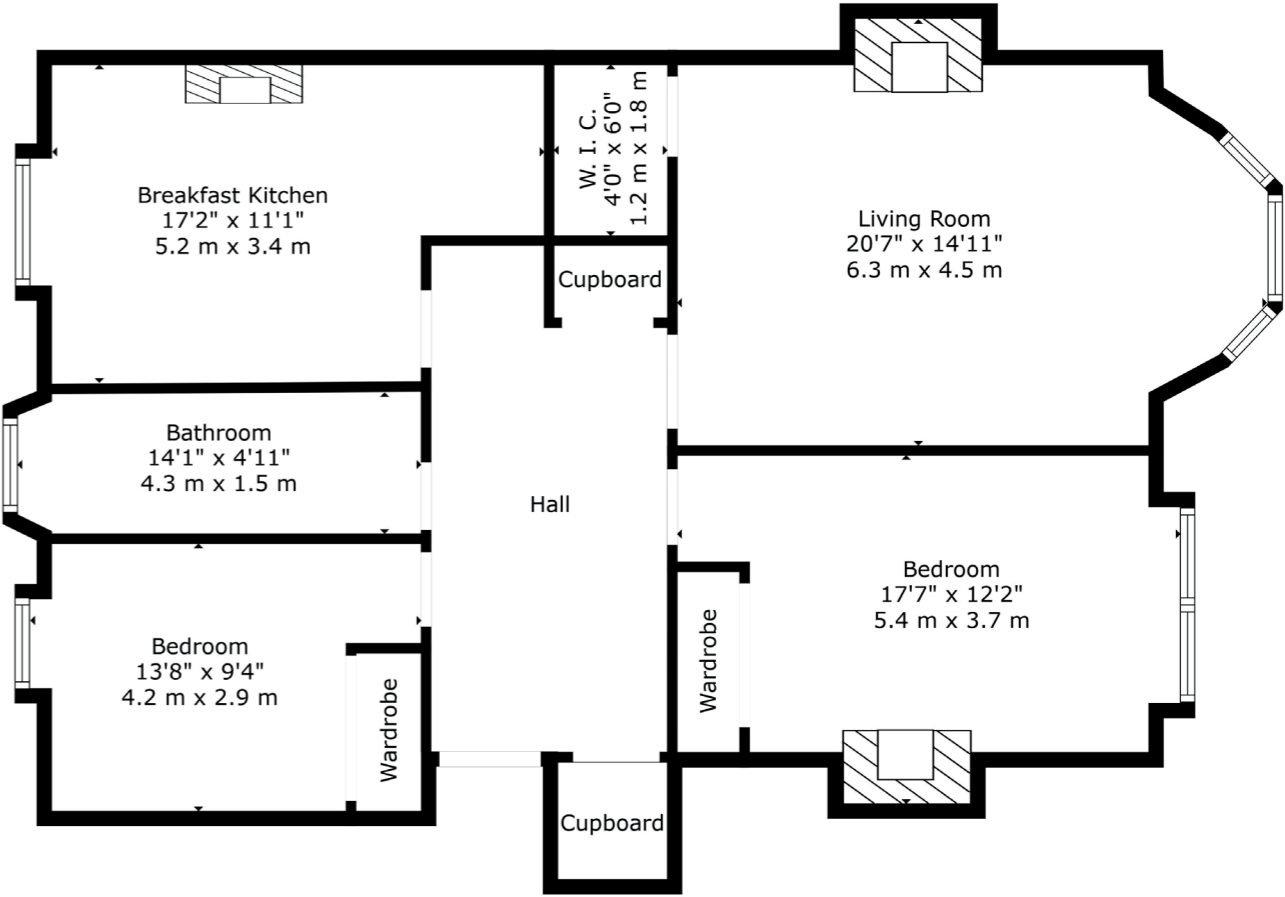
**1 | PUBLIC ROOM**

**This wonderfully presented top floor flat is situated in the heart of Finnieston and has two well-proportioned bedrooms and spacious modern dining kitchen. Renowned as being one of the trendiest places to live in the UK (The Times) the flat is perfectly located to take in all the locale has to offer.**

The blonde sandstone tenement is initially accessed via a secure entry into a well-presented communal hall which in turn leads to the rear courtyard. Located on the top floor the accommodation comprises: large reception hall with two storage cupboards off, fabulous bay windowed lounge with South facing aspects, large storage cupboard off and feature fire surround, there is a lovely dining kitchen to the rear boasting a range of base and wall mounted units and original cast iron range. There are two spacious double bedrooms both offering in-built storage, with the principal benefiting from original marble fire surround and finally, there is a well-appointed family bathroom with three piece suite and shower over bath.

In addition, the property benefits from gas central heating, well maintained communal gardens to the rear and wonderful original features including, detailed cornicing, fire surrounds and wonderful tiling in the resident's hall.





Today Finnieston has been promoted and built up as a modern residential and leisure area, mirroring Shoreditch in London. To this end many new bars and restaurants have been established, including The Ox & Finch, The Gannet, Six by Nico, The Kelvingrove Café, The Crabshakk and The Finnieston. Finnieston Street is a major junction on the Clydeside Expressway, and on 18th September 2006, was augmented with the addition of the Clyde Arc (known locally as "The Squinty Bridge") over the River Clyde.

Finnieston is also home to the SEC and the world-renowned OVO Hydro, where many events and concerts are held.

Public transport is available by bus and rail and there are excellent road links to Glasgow City Centre, via the Clydeside Expressway, the Clyde Tunnel and motorways.

**WE5061** | Sat Nav: 958 Sauchiehall Street, Finnieston, G3 7TH

For the full home report visit [www.corumproperty.co.uk](http://www.corumproperty.co.uk)

\* All measurements and distances are approximate Floorplans are for illustration purposes and may not be to scale.



WE'RE **SOLD** ON  
YOUR FUTURE



Corum West End  
82 Hyndland Road, Glasgow, G12 9UT

**Tel:** 0141 357 1888

**Email:** [westendenq@corumproperty.co.uk](mailto:westendenq@corumproperty.co.uk)

[www.corumproperty.co.uk](http://www.corumproperty.co.uk)