



31 DUNVEGAN DRIVE

BISHOPBRIGGS

www.corumproperty.co.uk





4 | BEDROOMS

3 | BATHROOMS

3 | PUBLIC ROOMS

This is a deceptively spacious semi detached villa; a family home offering spacious living accommodation, with excellent layout, which has been very well maintained by the current owners with bright and fresh décor throughout.

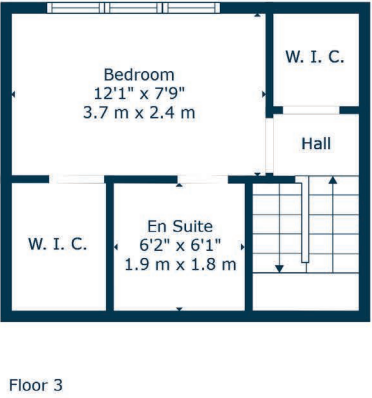
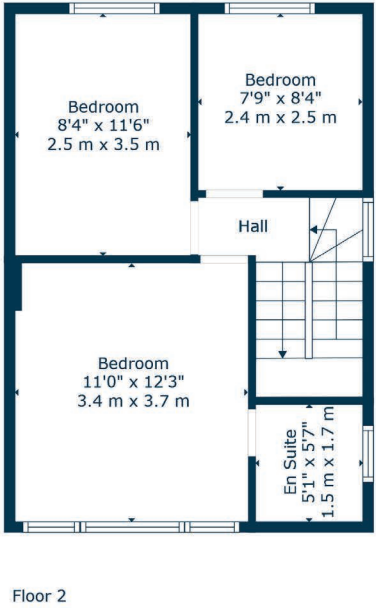
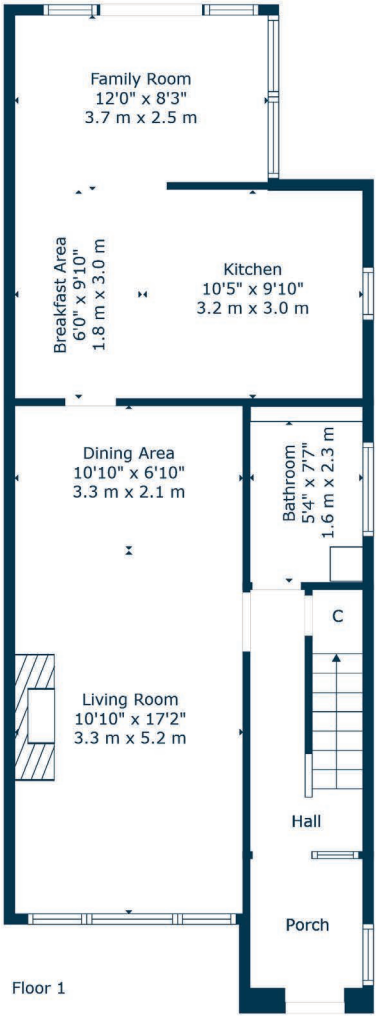
The property comprises; porch leading through to a reception hallway with stairs to the upper landing, front facing spacious lounge with area for a dining table, a well-appointed kitchen which enjoys a range of base and wall units and integrated appliances. At the rear there is a bright garden room and a good sized family bathroom completing the ground floor accommodation. The first floor comprised of three generous sized bedrooms, the larger one of which has an en-suite shower room off. A fixed staircase leads to the top floor featuring a further bedroom with an en suite and two spacious cupboards.

Externally, the property benefits from a driveway providing parking. The rear gardens are beautifully presented with mature beds, artificial grass and a wonderful external garden room/home bar, offering a superb entertaining space.









Bishopbriggs offers a wealth of local amenities, including schools, at both primary and secondary levels, recreational facilities, supermarkets, shops, golf courses and a host of popular bars and restaurants. Bishopbriggs train station offers a regular service to both Glasgow and Edinburgh and there are nearby road links giving easy access to Glasgow City Centre and the central belt motorway network.

BD3722 | Sat Nav: 31 Dunvegan Drive, Bishopbriggs, G64 3LB

For the full home report visit www.corumproperty.co.uk

* All measurements and distances are approximate Floorplans are for illustration purposes and may not be to scale.



WE'RE **SOLD** ON
YOUR FUTURE



Corum Bearsden
1 Canniesburn Toll, Bearsden, G61 2QU

Tel: 0141 942 5888

Email: bearsdenenq@corumproperty.co.uk

www.corumproperty.co.uk