



28 SIDLAW ROAD
BEARSDEN

www.corumproperty.co.uk





2 | BEDROOMS

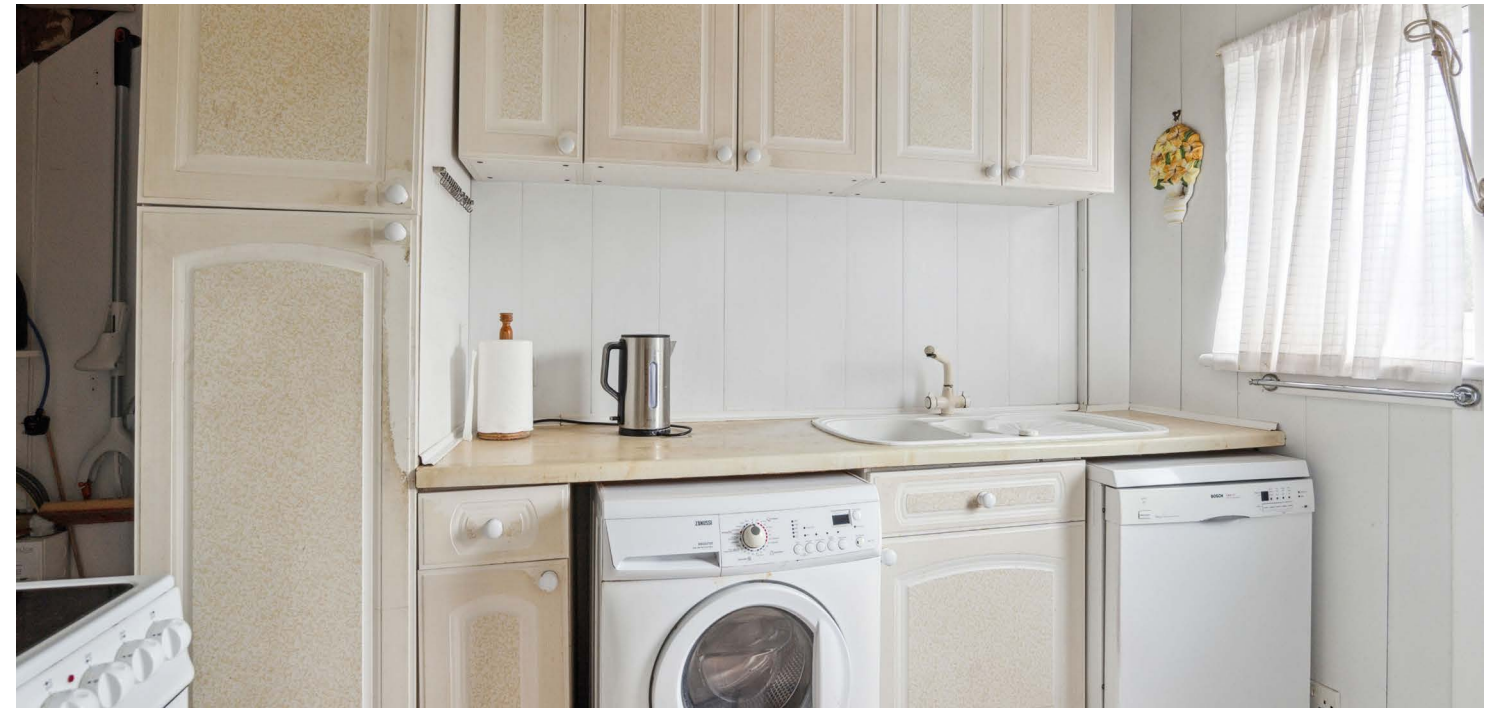
1 | BATHROOM

1 | PUBLIC ROOM

Situated within the catchment area for the popular Baljaffray Primary School and the excellent Bearsden Academy, 28 Sidlaw Road is a lovely two bedroom, end terrace family home, set back from the main road, within the popular Bonnaughton district of Bearsden.

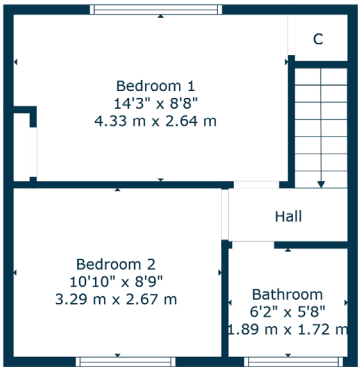
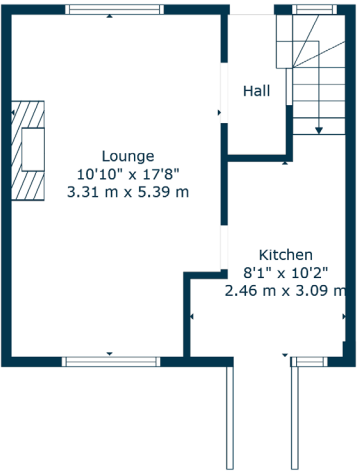
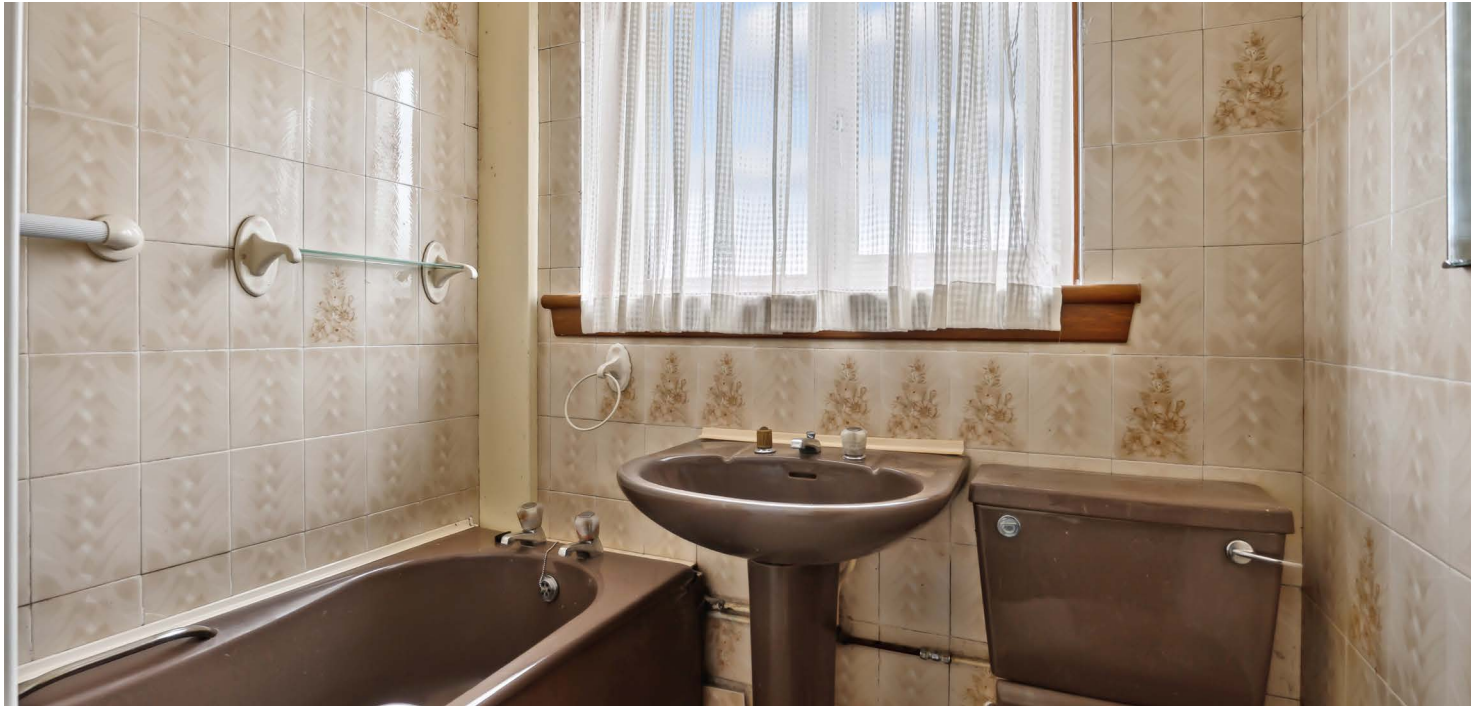
The accommodation on offer comprises:- good sized, front facing lounge, galley style kitchen providing access to the rear garden, two good sized bedrooms, and a family bathroom completes the accommodation.

Externally, there is a substantial rear garden which is mainly monoblocked and a single garage.









1st Floor



Ground Floor

The suburb of Bearsden is one of Glasgow's most desired districts in which to reside. There are numerous highly acclaimed educational facilities at both Primary and Secondary levels and leisure facilities are plentiful with a choice of private and state gyms and clubs in abundance. Locally, there is an excellent selection of shops and services at Bearsden Cross along with restaurants, cafes and bars. There are excellent bus links nearby and train stations can be found at Hillfoot, Westerton and Bearsden providing regular services into Glasgow's West End and City Centre, including a service to Edinburgh.

Glasgow Airport can be reached within twenty-five minutes off peak and, to the north of Bearsden is the world renowned Loch Lomond and The Trossachs National Park.

BD3739 | Sat Nav: 28 Sidlaw Road, Bearsden, G61 4LD

For the full home report visit www.corumproperty.co.uk

* All measurements and distances are approximate Floorplans are for illustration purposes and may not be to scale.



WE'RE **SOLD** ON
YOUR FUTURE



Corum Bearsden
1 Canniesburn Toll, Bearsden, G61 2QU

Tel: 0141 942 5888

Email: bearsdenenq@corumproperty.co.uk

www.corumproperty.co.uk