



3 INGLEBY COURT

HOUSTON ROAD, BRIDGE OF WEIR

www.corumproperty.co.uk





2 | BEDROOMS

1 | BATHROOMS

1 | PUBLIC ROOMS

An impressive two bedroom, modern flat in a central village location offering freshly decorated and comprehensively upgraded accommodation.

A lovely modern flat positioned in this charming development with maintained communal grounds including residents parking. Ingleby Court is positioned in a central location within the popular village of Bridge of Weir.

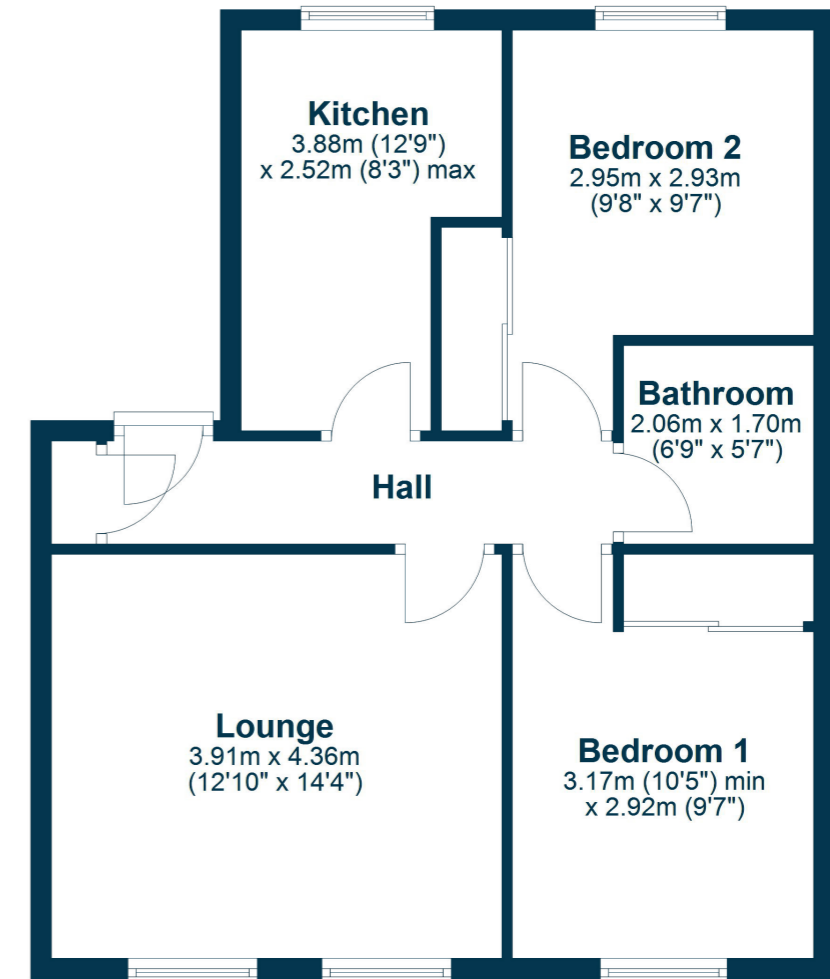
The flat has been comprehensively modernised and upgraded with new floor coverings and neutral decoration. A stylish modern fitted kitchen features white gloss door fronts with contrasting work surfaces and modern integrated appliances. The bathroom has a modern suite with complementary tiling. There is a gas fired central heating system, a security entry system and double glazing.

The accommodation comprises a central reception hallway with entry to all rooms and a store cupboard. The lounge is a spacious room with twin windows to the front. There are two double bedrooms, both with fitted wardrobes. The kitchen has modern fitted furniture and there is a partially tiled bathroom.

EER band: B

Council Tax Band: D





Bridge of Weir has good road links towards the M8 motorway, Glasgow International Airport and Glasgow city centre. The village offers a wide range of local amenities including restaurants, shops, and a library. The village has a popular Primary School with a nursery and secondary education is at the prestigious Gryffe High School. There is also private schooling nearby at St. Columba's in Kilmacolm. The village has two 18 hole golf courses and there is fishing available on the River Gryffe.

BW2493 | Sat Nav: 3 Ingleby Court, Houston Road, Bridge of Weir, PA11 3RF

For the full home report visit www.corumproperty.co.uk

* All measurements and distances are approximate Floorplans are for illustration purposes and may not be to scale.



WE'RE **SOLD** ON
YOUR FUTURE


C O R U M

Corum Bridge of Weir
2 Windsor Place, Main Street, Bridge Of Weir, PA11 3AF

T: 01505 691 400

E: bridgeofweir@corumproperty.co.uk

www.corumproperty.co.uk