



1/2, 130 NITHSDALE ROAD

POLLOKSHIELDS

www.corumproperty.co.uk



3 | BEDROOMS
1 | BATHROOM
1 | PUBLIC ROOM

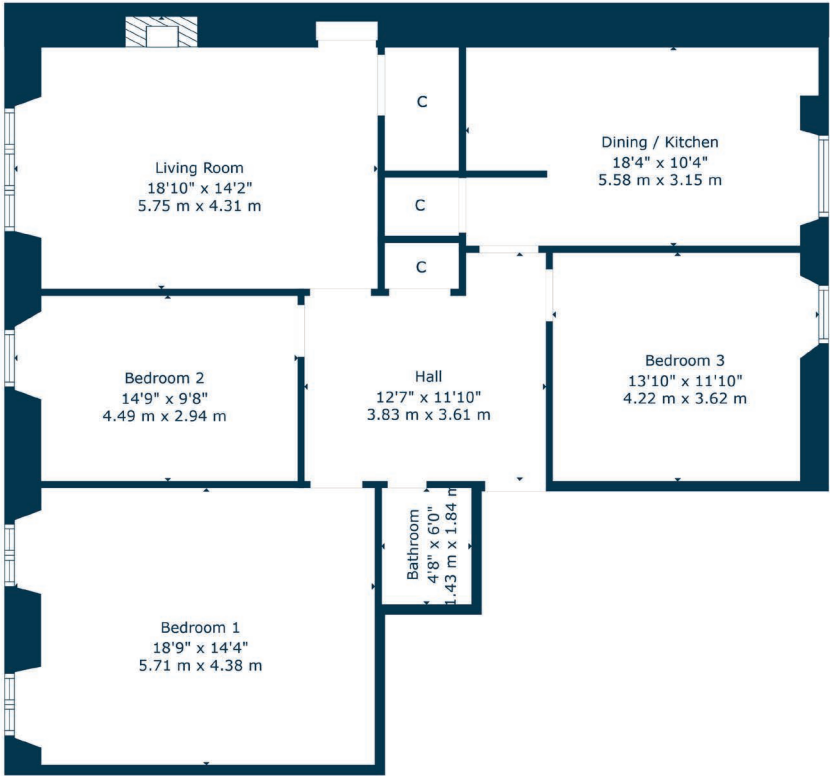
Occupying a first floor position in Pollokshields with a leafy open outlook to the front, this flat offers some impressive original features and generous proportions.

- First floor flat
- 3 double bedrooms
- Large lounge with views
- Dining sized kitchen
- Gas central heating, original features, modern decor
- Great location close to shops and transport

Amenities

130 Nithsdale Road is a stone's throw from a range of amenities, including a local greengrocer, cafes, restaurants and more. Venturing a little further, you will find a Sainsbury's Local on Darnley Road, a Morrison's in Crossmyloof, and everything Strathbungo/Shawlands has to offer. Maxwell Park and Queen's Park (both less than a mile from the property) offer ample green space for walking, and nearby recreational facilities include Titwood Bowling and Tennis Club, and Clydesdale Cricket Club.

Public transport makes Glasgow city centre easily accessible by train, with Pollokshields West Station being one stop from Central Station, and countless bus services also running along Pollokshaws Road. It is perfectly situated for an easy commute.



Sat Nav:
1/2, 130 Nithsdale Road, Pollokshields, G41 5RB

SS4879

*All measurements and distances are approximate.
Floorplans are for illustration purposes and may not be to scale.

For the full home report visit
www.corumproperty.co.uk



WE'RE **SOLD** ON
YOUR FUTURE



Corum Shawlands
247 Kilmarnock Road, Shawlands, G41 3JF

Tel: 0141 636 7588

Email: shawlands@corumproperty.co.uk

www.corumproperty.co.uk