



**FLAT 5, DALNAIR CASTLE**  
CROFTAMIE

[www.corumproperty.co.uk](http://www.corumproperty.co.uk)







**2 | BEDROOMS**

**2 | BATHROOMS**

**1 | PUBLIC ROOM**

**Situated in the historic Dalnair Castle Estate, located on the outskirts of the village of Croftamie, this beautiful home allows you the opportunity to live in a prestigious nineteenth century Scottish castle with all the conveniences of modern day living. Built circa 1884 this Scottish Baronial mansion sits on the edge of Loch Lomond and The Trossachs National Park and boasts beautifully maintained communal grounds and scenic views. Flat five is an impressive first floor two bedroom conversion boasting outstanding views, and a striking, main living space.**

The specification includes gas central heating and double glazing throughout with ample private residents parking.

In full the accommodation comprises; main door with lower communal vestibule, into the property's private lower hall with under stairs storage, stairs lead up to an upper landing which is ideal for cloaks storage, and accesses the apartments front door. Once in, there is a large L shaped hall which accesses all accommodation and boasts generous storage cupboard and WC, an immediately impressive and extremely large main living space with open planned modern, high spec kitchen, utility room, and additional home office or study area off, two large double bedrooms, and a well appointed main house bathroom with four piece suite completes the accommodation.

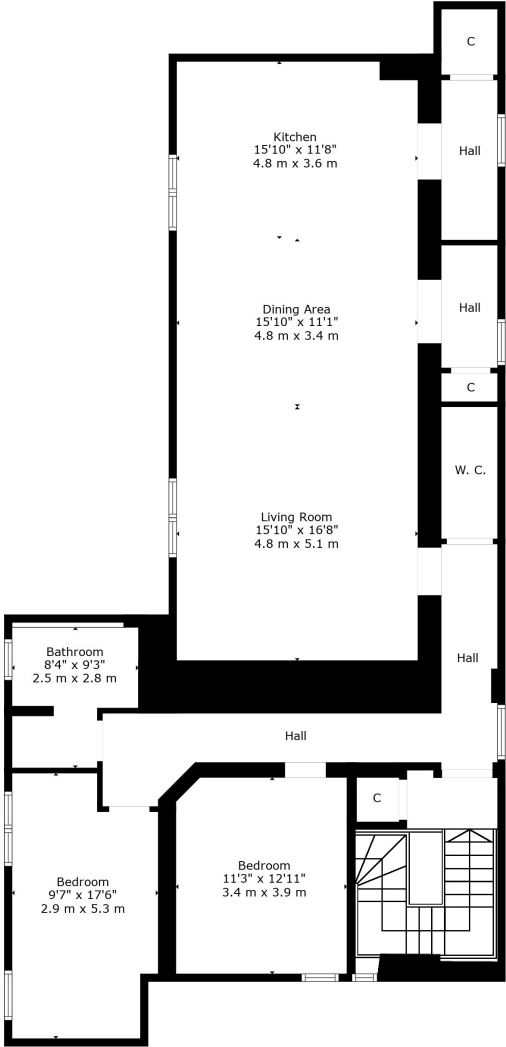
Dalnair Castle offers one the opportunity to purchase a sizeable, flawlessly presented and extremely well appointed apartment held within a simply stunning historic building. The development is conveniently located for access to both the amenities of Milngavie and Bearsden, alongside the recreational pursuits found in abundance at Loch Lomond and surrounds.

In short, this is a truly wonderful family home that offers endless options for modern family living, within a picturesque and admired country estate setting.









Croftamie is a picturesque Stirlingshire village, neighbouring the popular villages of Gartocharn and Drymen, where a number of local shops and facilities can be found, including convenience stores, post office, doctors, dentists, village halls and sporting pursuits. Croftamie village falls within the catchment area for the popular Drymen Primary School and the sought after Balforn High School. Loch Lomond is only a short drive, where a wealth of outdoor and on water pursuits can be enjoyed. The nearest railway stations can be found at Balloch and Milngavie. The village is approximately 35 minutes from Glasgow City Centre and Glasgow Airport. In the other direction, Stirling is approximately 30 minutes away, with the main motorway network easily accessible.

**BD3781** | Sat Nav: Dalnair Castle, Croftamie, G63 0FE

For the full home report visit [www.corumproperty.co.uk](http://www.corumproperty.co.uk)

\* All measurements and distances are approximate Floorplans are for illustration purposes and may not be to scale.





WE'RE **SOLD** ON  
YOUR FUTURE



Corum Bearsden  
1 Canniesburn Toll, Bearsden, G61 2QU

**Tel:** 0141 942 5888

**Email:** [bearsdenenq@corumproperty.co.uk](mailto:bearsdenenq@corumproperty.co.uk)

[www.corumproperty.co.uk](http://www.corumproperty.co.uk)