



6 CRAIG HILL PLACE

FAIRLIE

www.corumproperty.co.uk





3 | BEDROOMS

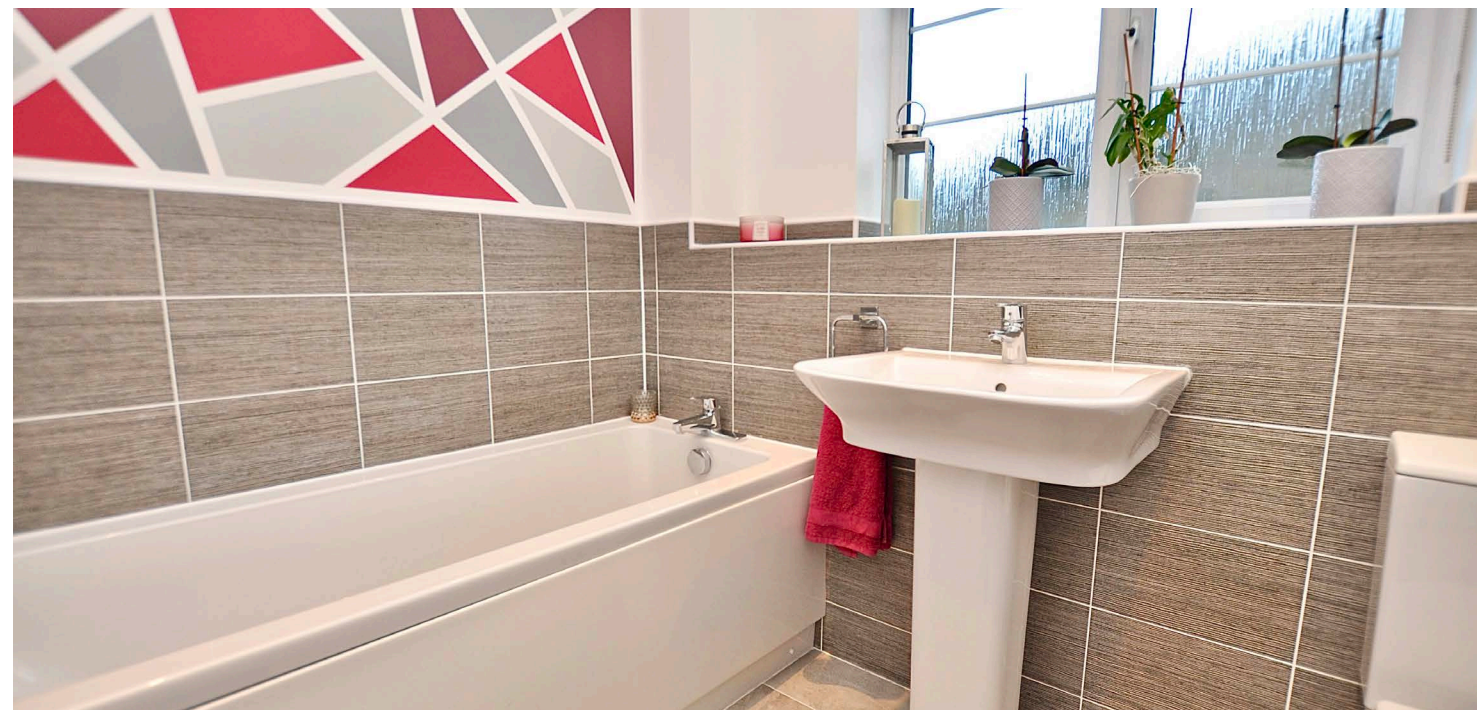
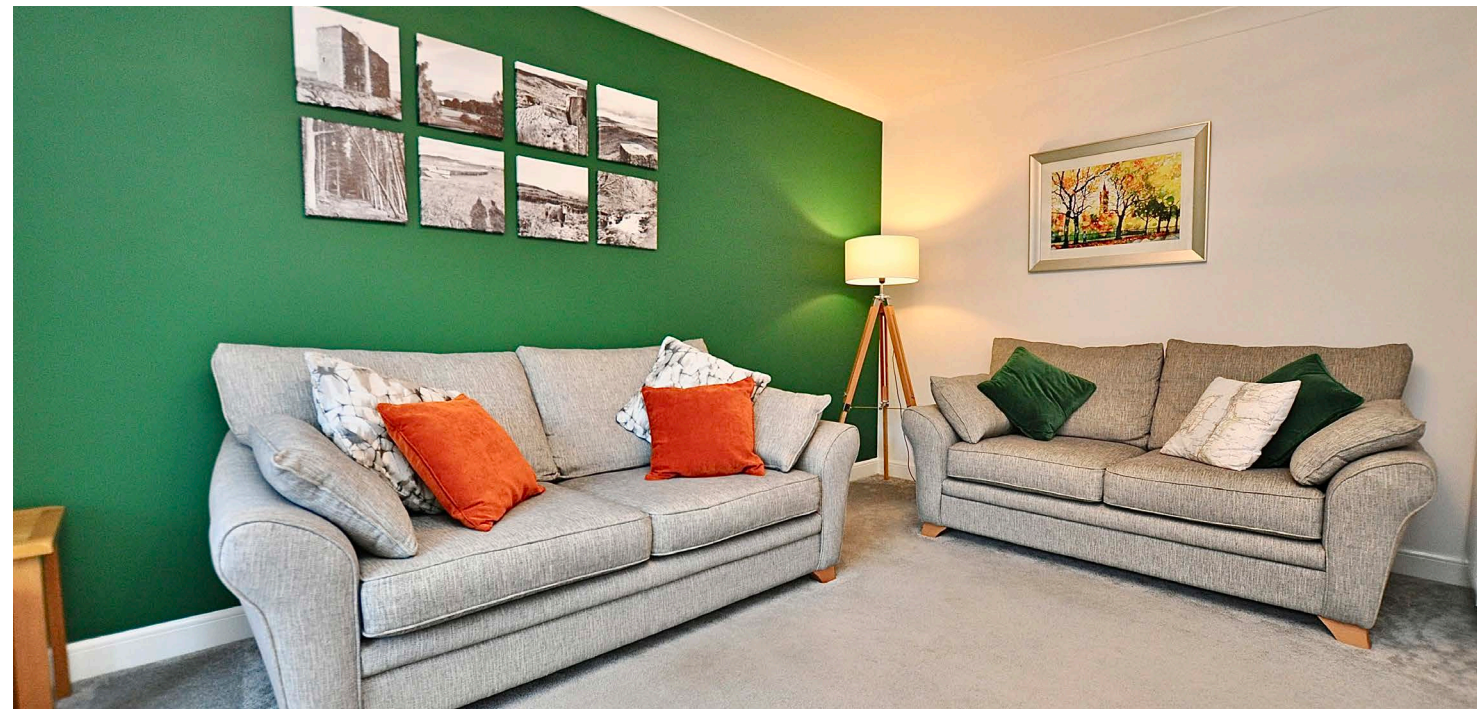
2 | BATHROOMS

1 | PUBLIC ROOM

This stunning modern semi-detached villa is located in this most popular development in the picturesque village of Fairlie. There are open aspects to the front of the house and the wonderful sized west facing private garden grounds to the rear.

6 Craig Hill Place is a lovely home which is presented in immaculate condition. This semi-detached villa is a stunning property set amidst excellent garden grounds with the main rear gardens being west facing. There are also aspects to the Isle of Cumbrae over the Firth of Clyde.

The stunning accommodation on offer extends to the bright welcoming reception hallway, downstairs wc, modern fitted kitchen which is open plan to the dining area and in turn access to the rear garden grounds and good-sized lounge. On the upper floor there are three bedrooms and family bathroom. The master bedroom has an ideal en-suite. The property has gas central heating and double glazing. The private garden grounds are to the front & rear of the home and to further compliment this area there is a driveway. Early viewing is highly recommended to appreciate the accommodation and location on offer.





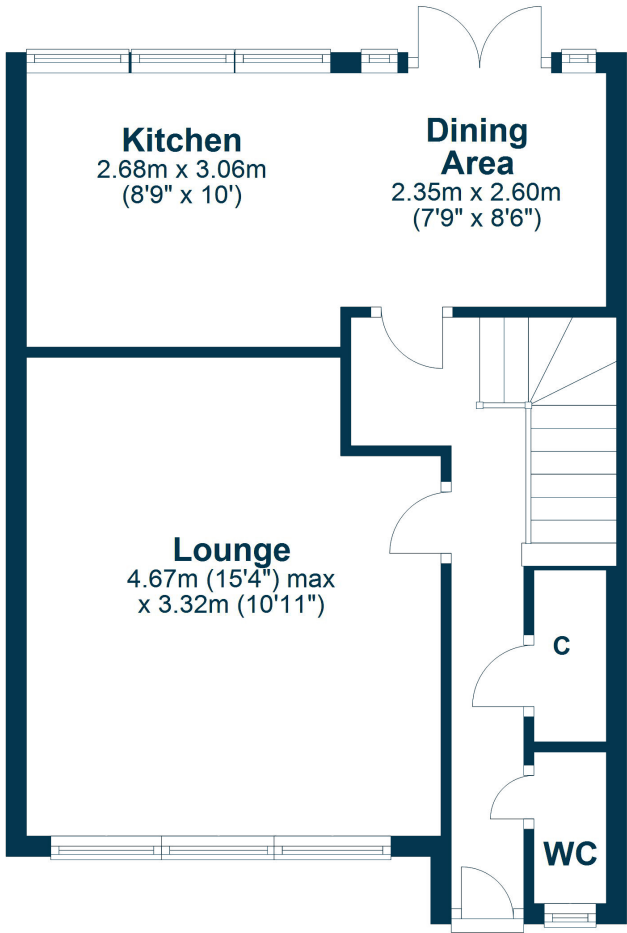




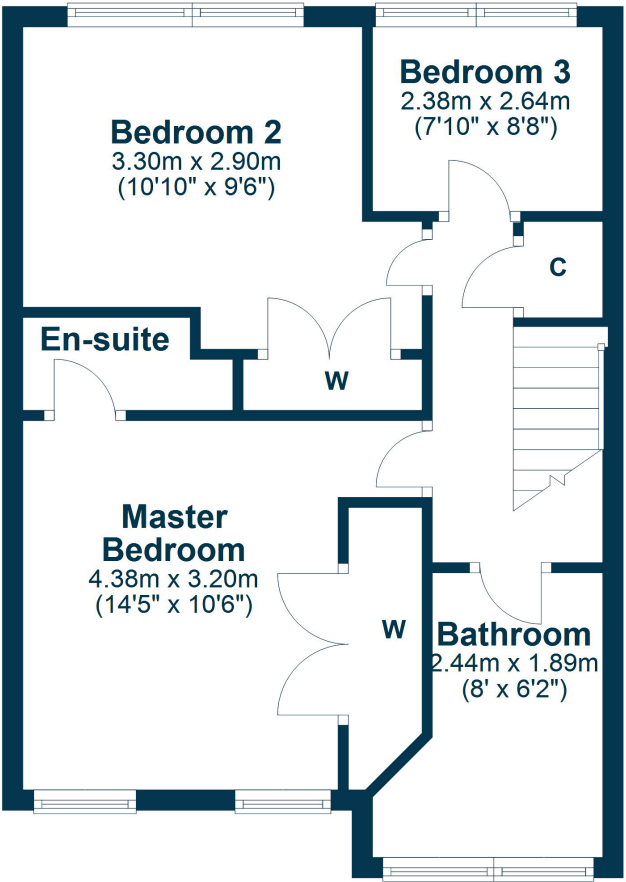




Ground Floor



First Floor



Fairlie is a popular small village located on the Clyde Coast, south of Largs. The village has many amenities which include a primary school, Fairlie Primary, local bar / restaurant, shopping facilities and a bowling club. Fairlie is located within close proximity to Kelburn Country Park and Largs Marina and it is within the catchment area for those who have children attending Largs Academy Campus. The village is also well positioned for accessing all major road networks and there is a local train station which provides a frequent mainline service to Largs and Glasgow.

LA2008 | Sat Nav: 6 CRAIG HILL PLACE FAIRLIE KA29 0AY

For the full home report visit www.corumproperty.co.uk

* All measurements and distances are approximate Floorplans are for illustration purposes and may not be to scale.



WE'RE **SOLD** ON
YOUR FUTURE



Corum Largs
66 Main Street, Largs, KA30 8AL

Tel: 01475 675 001

Email: largs@corumproperty.co.uk

www.corumproperty.co.uk