



**4/7 1071 ARGYLE STREET**  
**FINNIESTON**

[www.corumproperty.co.uk](http://www.corumproperty.co.uk)





**2 | BEDROOMS**

**2 | BATHROOMS**

**1 | PUBLIC ROOM**

**Flat 4/7 1071 Argyle Street, or better known as the 'Hot House', is a wonderful modern, two-bedroom, fourth floor flat located in the vibrant Finnieston district and is perfectly located to take advantage of the thriving local amenities on offer.**

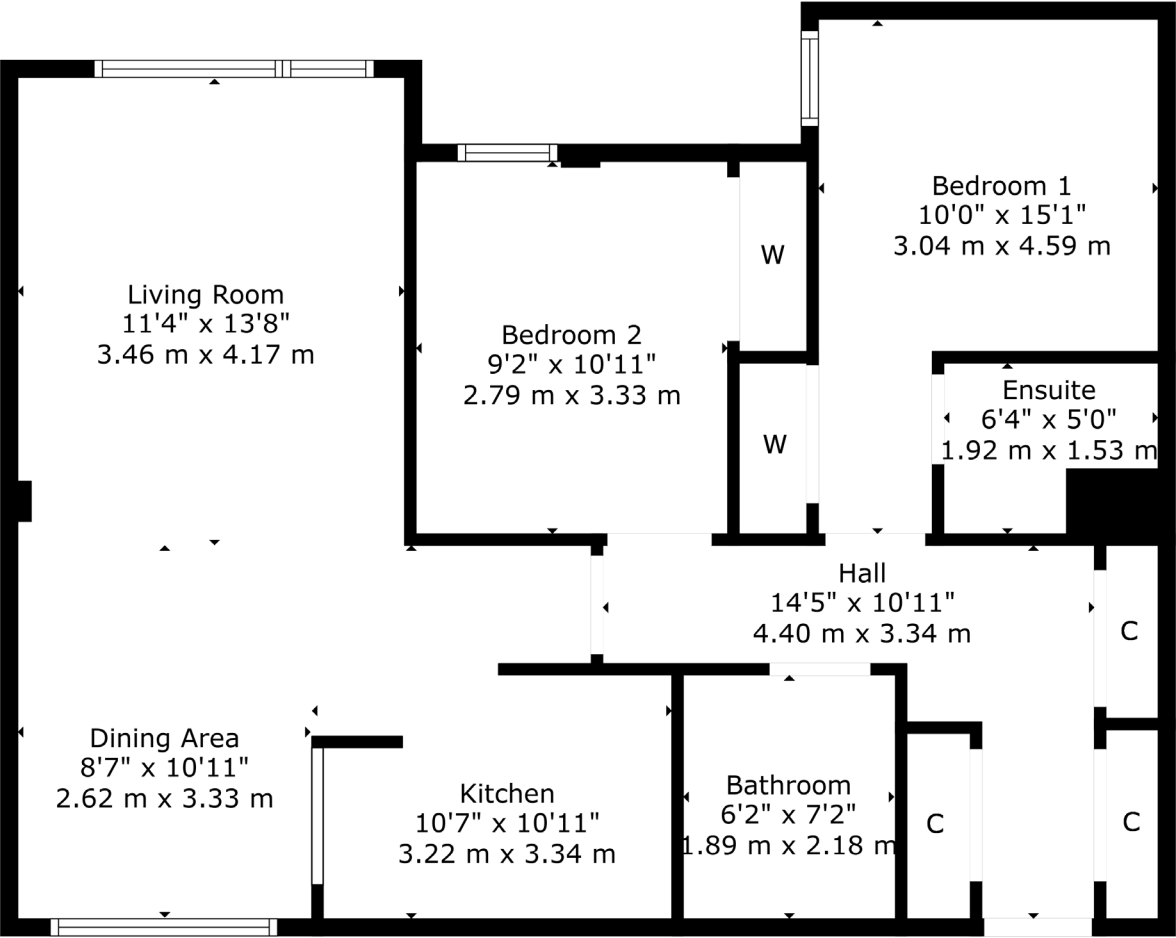
Internally, the accommodation comprises; welcoming reception hallway with three storage cupboards off, and a fantastic large open plan living/dining/ kitchen area with high quality Coretec original Arcadian Oak flooring and stunning open aspects to the front and rear of the property. There are two excellent double bedrooms, with the principal benefiting from an en-suite shower room and a modern family bathroom completes the internal accommodation on offer.

The flat has double glazing, gas central heating, secure door entry system, and lift access to all floors.









Today Finnieston has been promoted and built up as a modern residential and leisure area, mirroring Shoreditch in London. To this end many new bars and restaurants have been established, including The Ox & Finch, The Gannet, Six by Nico, The Kelvingrove Café, The Crabshakk and The Finnieston. Finnieston Street is a major junction on the Clydeside Expressway, and on 18th September 2006, was augmented with the addition of the Clyde Arc (known locally as “The Squinty Bridge”) over the River Clyde.

**WE5196** | Sat Nav: 1071 Argyle Street, Finnieston, Glasgow, G3 8LZ

For the full home report visit [www.corumproperty.co.uk](http://www.corumproperty.co.uk)

\* All measurements and distances are approximate Floorplans are for illustration purposes and may not be to scale.



WE'RE **SOLD** ON  
YOUR FUTURE



Corum West End  
82 Hyndland Road, Glasgow, G12 9UT

Tel: 0141 357 1888

Email: [westendnq@corumproperty.co.uk](mailto:westendnq@corumproperty.co.uk)

[www.corumproperty.co.uk](http://www.corumproperty.co.uk)