



5B BRISBANE COURT

GIFFNOCK

www.corumproperty.co.uk





2 | BEDROOMS

1 | BATHROOM

1 | PUBLIC ROOM

This lovely recently refurbished ground floor luxury apartment enjoys a popular location within this sought after pocket of Giffnock. Constructed by respected builders, Dickie, the subjects have the added benefit of south facing balcony, private garage and offer turnkey opportunity to the local market.

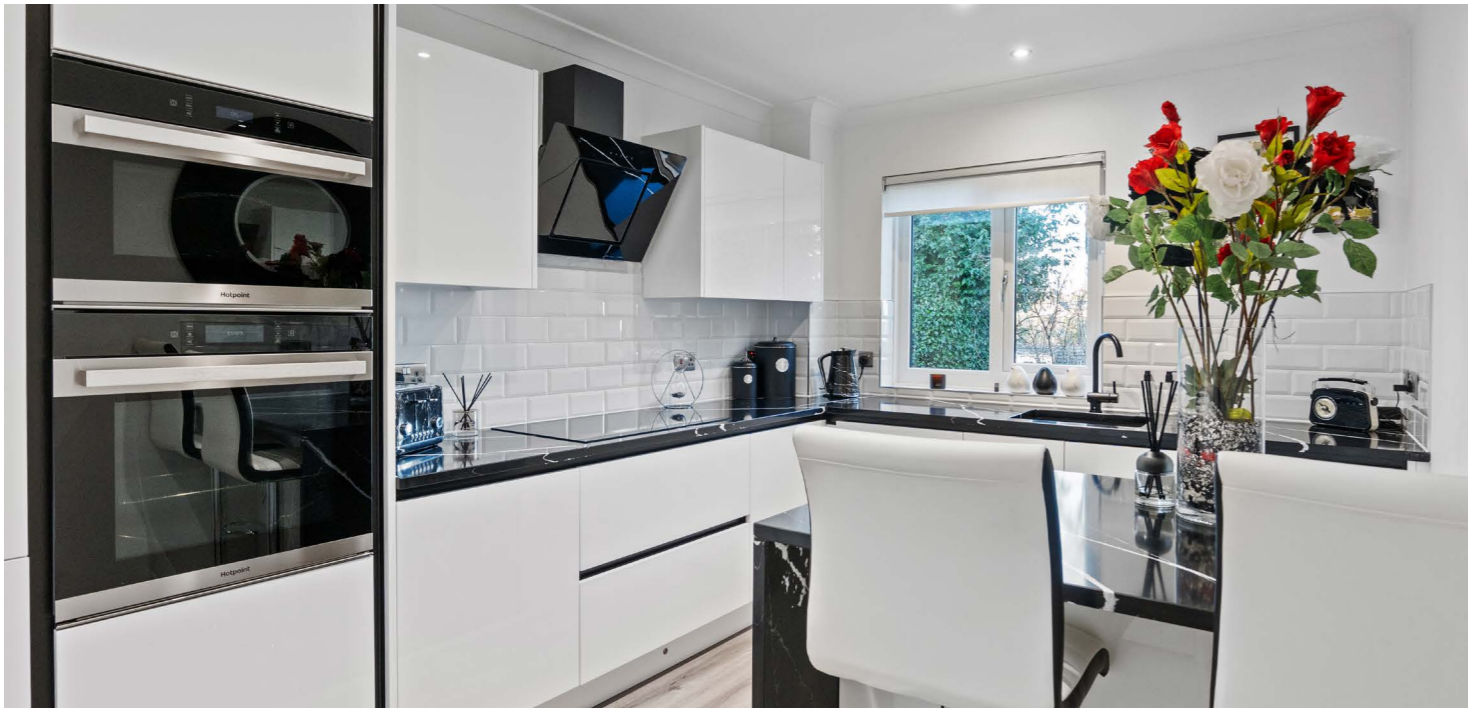
Brisbane Court is a private and select development by Dickie Homes that enjoys a quiet situation and yet is only minutes from all of Giffnock's main amenities and facilities. This is a quality and luxury apartment which has been reconfigured and fully refurbished to an exacting standard. Further benefiting from its own balcony, which is south facing, private garaging, residents' parking, this breathtaking apartment would suit a broad range of potential buyers.

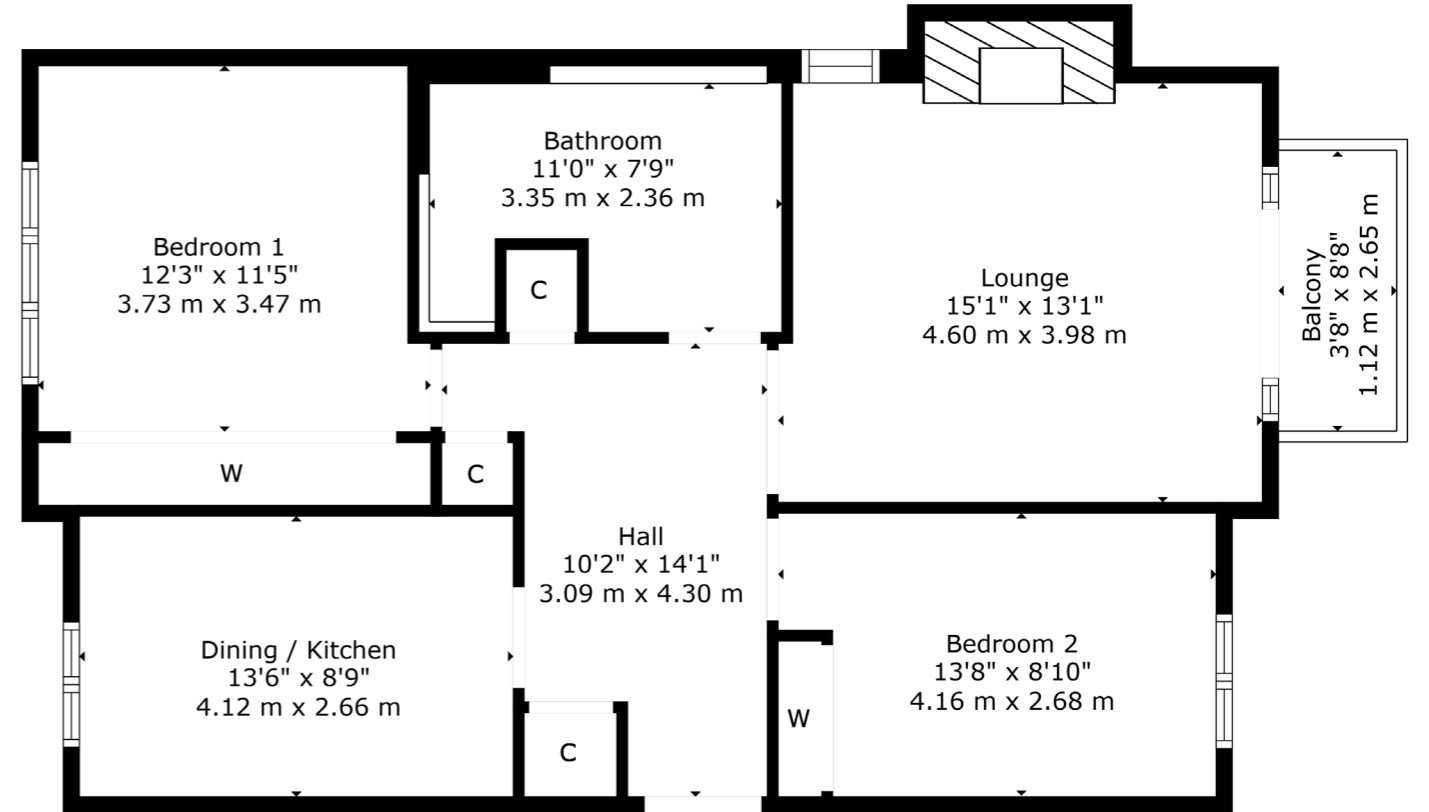
Entered via secure visible entry system, the well maintained and carpeted residents' hallway gives access to the ground floor whereby the accommodation comprises of traditional reception hallway with good storage adjacent, fantastic formal lounge with access to balcony, dining kitchen with a range of wall and base mounted units. lovely principal bedroom with fitted wardrobes, second well-proportioned double bedroom. The bathroom and en-suite have been opened up to create a large luxurious bathroom suite

The specification of the property includes a system of upgraded modern electric heating, double glazing, secure entry system and the property is well presented and decorated throughout.

The floor plan shall provide you with a detailed layout of this fantastic apartment, however, we recommend viewing to appreciate the layout, finishing and convenient location on offer.

Externally the property is set within well maintained residents garden grounds with large private garage, fitted with power and light. It is worthy of note that the development is immaculately factored by Hacking & Paterson.





Giffnock continues to be one of the most desirable residential suburbs on Glasgow's south side. A haven for young growing families, the district is synonymous with some of the best schooling in the West of Scotland. Moreover, there are excellent transport links via bus and train close at hand, in addition to local motorway links (M77/M8) providing swift access to the city centre and Ayrshire. There are two train stations within close proximity, Giffnock Train Station and Muirend Train Station. There are numerous independent shops, restaurants and delicatessens only a short walk away. An abundance of sports and leisure facilities are available within East Renfrewshire including David Lloyd Sports Club, Pure Gym, Nuffield Gym, Whitecraigs Golf Club, Giffnock and Whitecraigs Tennis Clubs and Rouken Glen Park.

NM4488 | Sat Nav: 5 Brisbane Court, Giffnock, G46 6LX

For the full home report visit www.corumproperty.co.uk

* All measurements and distances are approximate Floorplans are for illustration purposes and may not be to scale.



WE'RE **SOLD** ON
YOUR FUTURE



Corum Newton Mearns
134 Ayr Road, Newton Mearns, G77 6EG

Tel: 0141 639 5888

Email: n.mearns@corumproperty.co.uk

www.corumproperty.co.uk