



**18 GLASSERTON ROAD**

MERRYLEE

[www.corumproperty.co.uk](http://www.corumproperty.co.uk)





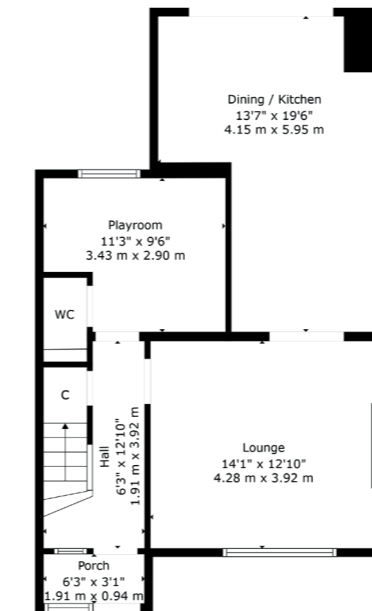
3 | BEDROOMS  
2 | BATHROOMS  
2 | PUBLIC ROOMS

18 Glasserton Road is an extended mid terrace home in a popular pocket of Glasgow's Southside. The property delivers many sought after traits and represents an excellent opportunity for astute buyers.

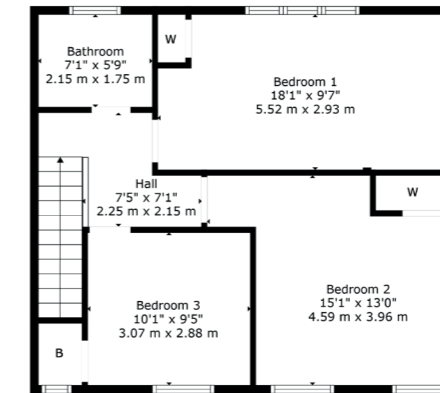
- Extended mid terrace home
- Driveway parking to the front
- Beautiful dining sized kitchen
- Three good double bedrooms
- Southerly facing rear garden
- Double glazing & gas heating

Amenities

18 Glasserton Road is located in a quiet family orientated street and has many amenities nearby as well as Newlands Park where the popular Dandelion Café is found together with nature walks, a playpark and the Newlands Park Community Tennis Centre. Further facilities are available at the Sainsburys store in Muirend, the Morrisons store near Shawlands or at the Silverburn shopping centre near Pollok. Reputable primary schooling is available around the corner on Friarton Road, which includes both Merrylee primary and Our Lady of the Annunciation. Muirend, Langside and Cathcart train stations are approximately half a mile from the front door.



Ground Floor



1st Floor

Sat Nav:  
18 Glasserton Road, Merrylee, G43 2LH

SS4918

\*All measurements and distances are approximate. Floorplans are for illustration purposes and may not be to scale.

For the full home report visit  
[www.corumproperty.co.uk](http://www.corumproperty.co.uk)





WE'RE **SOLD** ON  
YOUR FUTURE



Corum Shawlands  
247 Kilmarnock Road, Shawlands, G41 3JF

**Tel:** 0141 636 7588

**Email:** [shawlands@corumproperty.co.uk](mailto:shawlands@corumproperty.co.uk)

[www.corumproperty.co.uk](http://www.corumproperty.co.uk)