



**1/2, 11 KEIR STREET**

POLLOKSHIELDS

[www.corumproperty.co.uk](http://www.corumproperty.co.uk)

  
C O R U M

**4 | BEDROOMS**  
**1 | BATHROOM**  
**1 | PUBLIC ROOM**

A large first floor flat offering a flexible 5 apartment layout with generous room sizes, a modern specification and some original features.

- Large first floor flat
- 4 double bedrooms
- Impressive bay window lounge
- Dining sized kitchen
- Contemporary bathroom
- Gas central heating, double glazing, fresh decor

**Amenities**

The property is positioned within walking distance of shops and amenities upon Maxwell Road, Albert Drive and Nithsdale Road where thriving coffee shops, restaurants and delicatessens can be found. More extensive amenities are found at the Marks and Spencer's store at Queens Park, the Morrison's store at Crossmyloof or Newlands, or the shopping mall at Silverburn Pollok, a short drive to the South West.

Recreational pursuits in the area are varied including large municipal parks, health clubs/gyms, golf courses both public and private.

Schooling can be found locally at primary and secondary level.

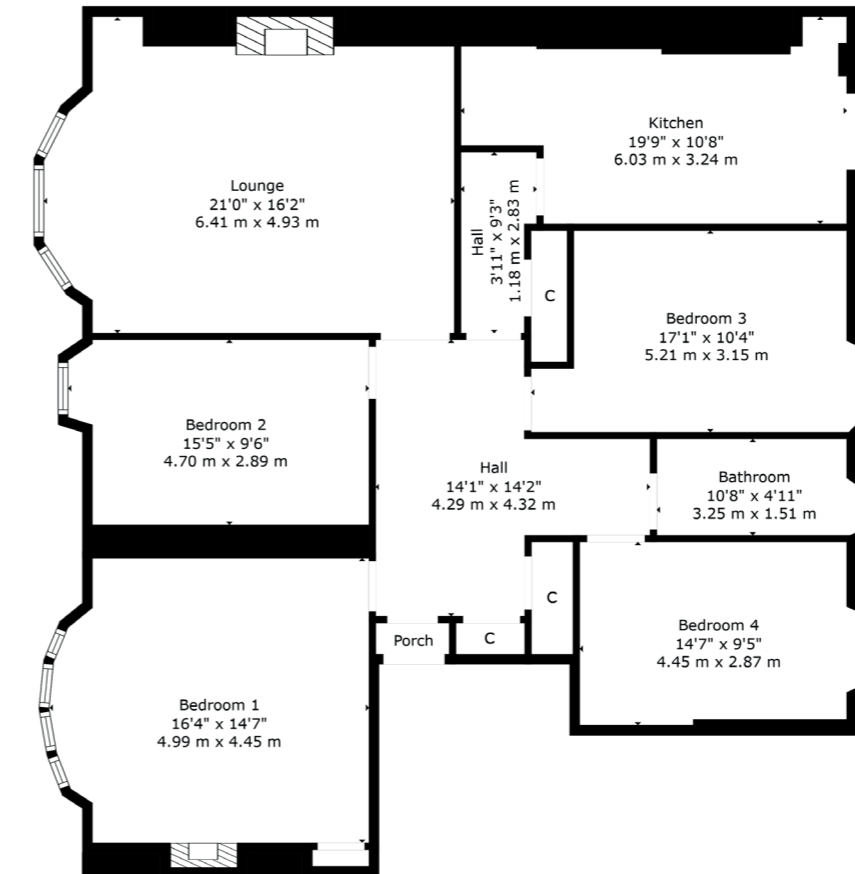
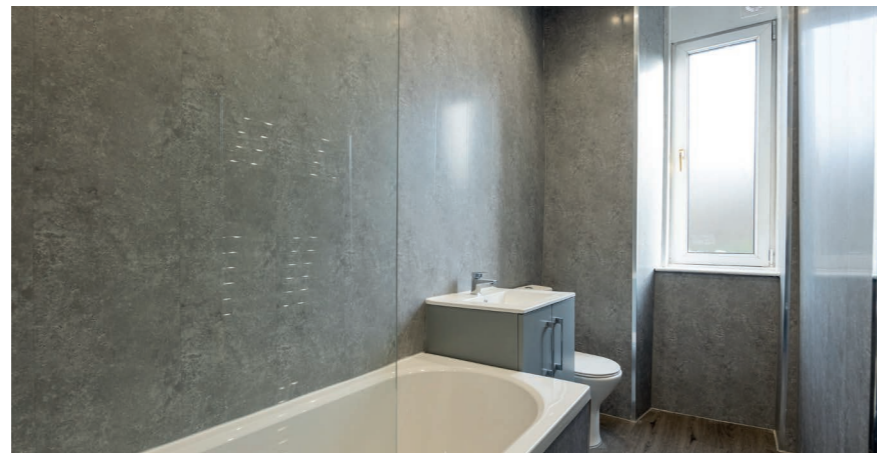
Frequent public transport provides rapid commuter access to the city centre.



VIRTUALLY STAGED



VIRTUALLY STAGED



**Sat Nav:**  
 11 Keir Street, Pollokshields, G41 2NP

**SS4924**

\*All measurements and distances are approximate. Floorplans are for illustration purposes and may not be to scale.

For the full home report visit  
[www.corumproperty.co.uk](http://www.corumproperty.co.uk)



VIRTUALLY STAGED

WE'RE **SOLD** ON  
YOUR FUTURE



Corum Shawlands  
247 Kilmarnock Road, Shawlands, G41 3JF

Tel: 0141 636 7588

Email: [shawlands@corumproperty.co.uk](mailto:shawlands@corumproperty.co.uk)

[www.corumproperty.co.uk](http://www.corumproperty.co.uk)