



FLAT 22, HOMEBRAE HOUSE

1 STRATHBLANE ROAD, MILNGAVIE

www.corumproperty.co.uk





1 | BEDROOM

1 | BATHROOM

1 | PUBLIC ROOM

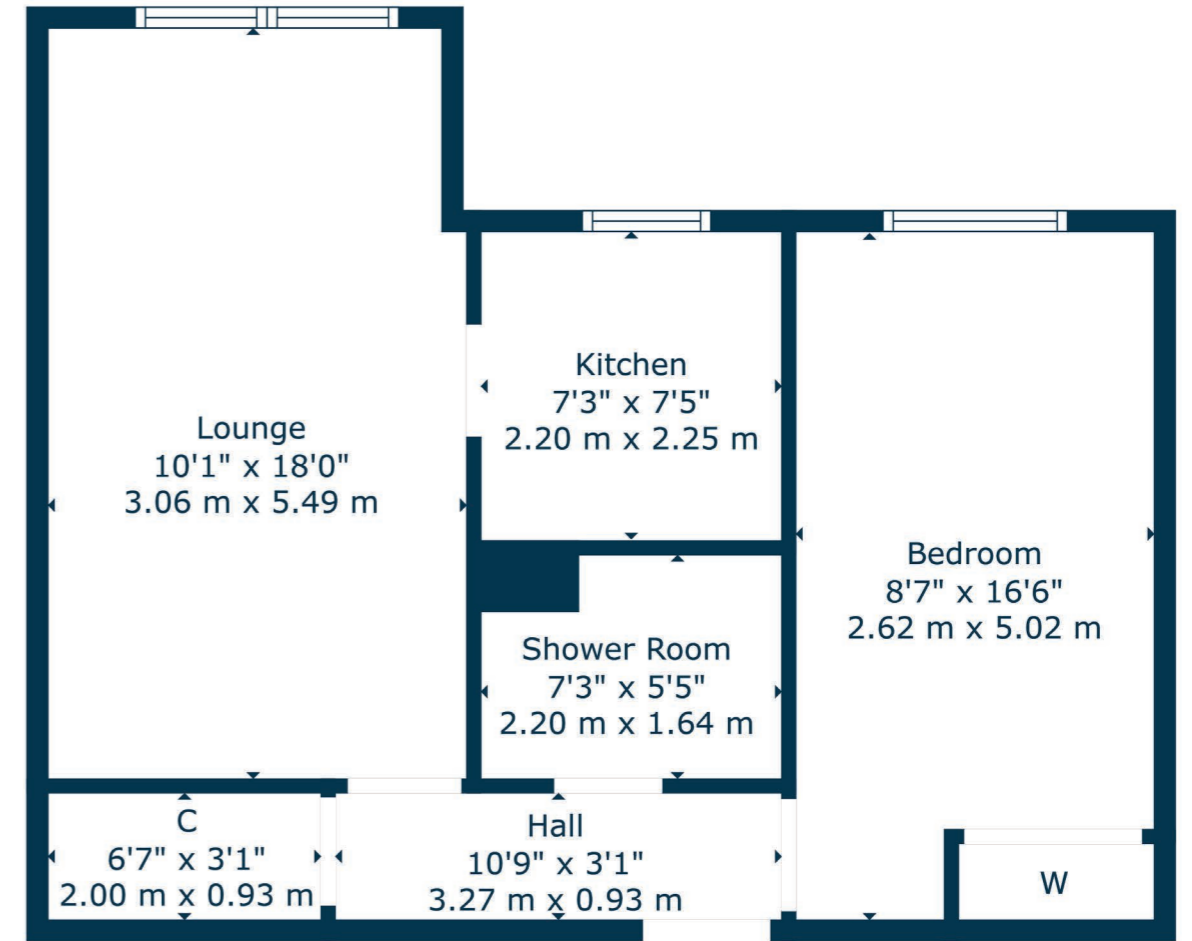
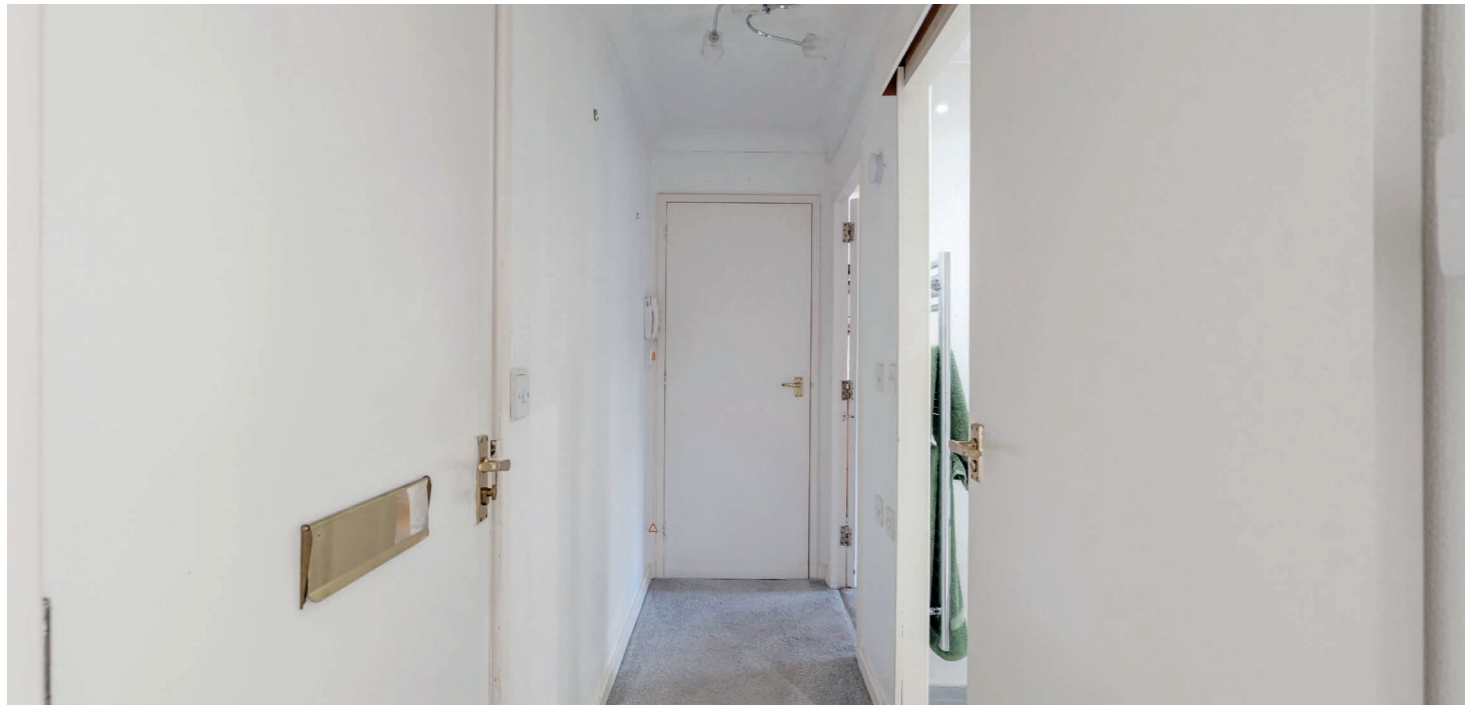
This conveniently located one bedroom apartment enjoys a prime first-floor position within a highly desirable McCarthy & Stone retirement development, offering both lift and stair access to all levels. Residents benefit from an on-site development manager, an emergency call system, a communal lounge, a laundry room, a guest suite for visitors, a shared outdoor patio area and ample parking for both residents and guests at the rear.

The upgraded specification includes double-glazed windows, secure entry, fresh décor throughout and modern electric heating.

The building is entered via secure access into the residents' hall. This tremendous apartment comprises:- entrance hallway, with an exceptionally large storage cupboard, a bright and spacious lounge, providing ample dining space, a modern and well-appointed kitchen, fitted with a range of base and wall-mounted units, a generously sized double bedroom, featuring built-in storage and, completing the accommodation, a refitted shower room, with a contemporary three-piece suite.

This is a superb and beautifully presented retirement apartment, offering a particularly stress-free living experience thanks to its high-quality specification and modern fixtures and finishes.





The property is extremely well placed for an extensive array of local amenities. Milngavie's pedestrianised town centre provides a wide selection of facilities and services, including banks, restaurants, Marks & Spencer's Food Hall and Waitrose. Lennox Park lies near the centre of Milngavie. Further recreational pursuits include a choice of sports centres/gyms, including Allander Sports centre, Nuffield Health Fitness & Wellbeing Gym, tennis and bowling clubs and an array of reputable golf clubs. Milngavie is home to the starting point of The West Highland Way with further walking and cycling trails close at hand in nearby Mugdock Country Park and around the Allander and Craigmaddie Reservoirs. Milngavie train station offers frequent trains to Glasgow's West End and City Centre, along with a direct service to Edinburgh.

BD3805 | Sat Nav: Flat 22, Homebrae House, 1 Strathblane Road, Milngavie, G62 8DN

For the full home report visit www.corumproperty.co.uk

* All measurements and distances are approximate Floorplans are for illustration purposes and may not be to scale.



WE'RE **SOLD** ON
YOUR FUTURE



Corum Bearsden
1 Canniesburn Toll, Bearsden, G61 2QU

Tel: 0141 942 5888

Email: bearsdenenq@corumproperty.co.uk

www.corumproperty.co.uk