



G2, 2 MOUNT ZION

QUARRIER'S VILLAGE

www.corumproperty.co.uk





2 | BEDROOMS

3 | BATHROOMS

1 | PUBLIC ROOM

A fabulous apartment, presented in walk-in condition within the converted Mount Zion church positioned in the heart of Quarriers village.

This imposing and impressive church dates from 1888 and formed a centre point of the former children's homes within the village of Quarriers. It was sympathetically converted to offer a range of contemporary apartments within this conservation village, positioned midway between Bridge of Weir and Kilmacolm with access to numerous local facilities.

This stunning apartment displays a wealth of character and an exacting specification that includes a gas fired central heating system and restored single stain-leaded glazed external windows. There are broad communal areas within the church conversion with a secure entry system for access.

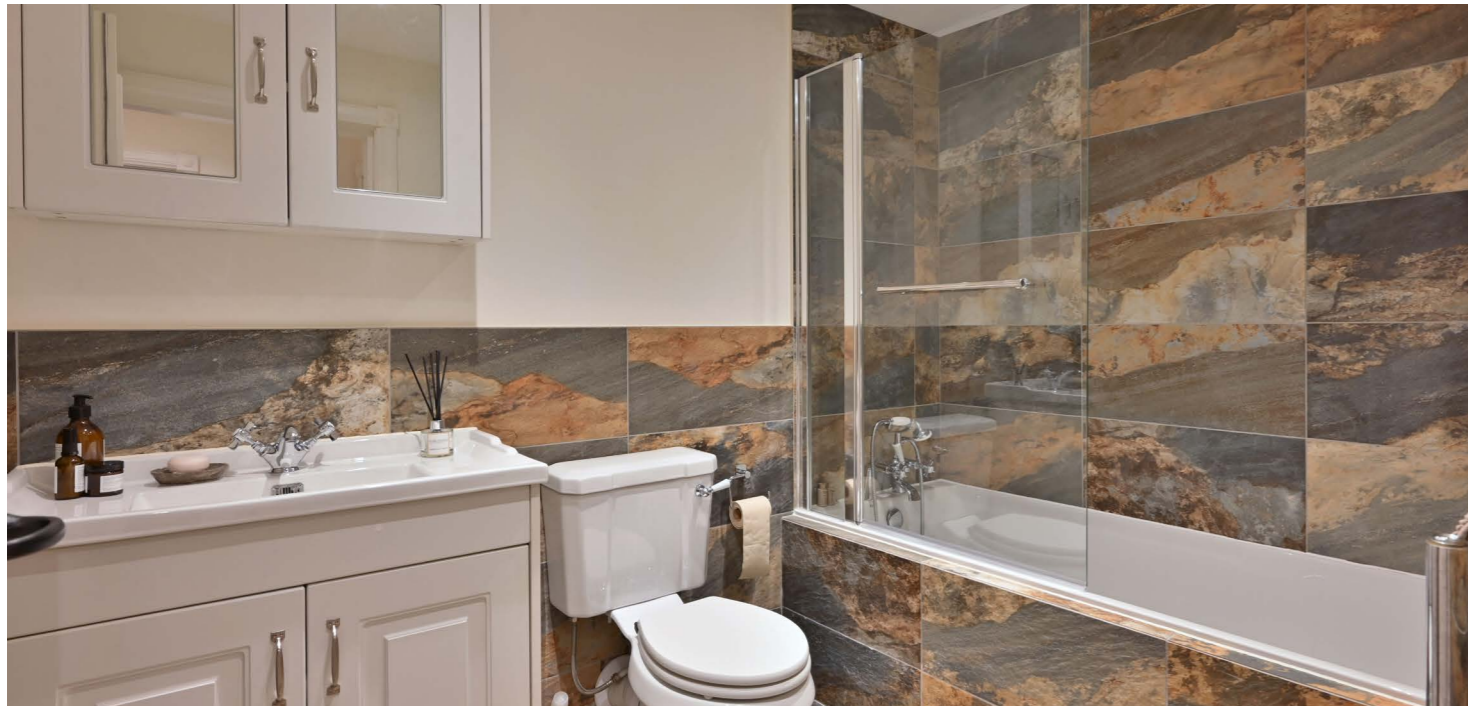
There is hardwood timber flooring extending through the split level reception hall, and the open plan living area and kitchen. A contemporary range of modern fitted, sage kitchen furniture includes solid oak worktop surfaces with an in-laid Belfast sink, a range of integrated appliances including a microwave oven, dishwasher, washer dryer, cooker hood and a fridge/freezer.

There are vaulted ceilings within many of the apartments with a range of decorative area of plasterwork and immaculately retained stonework.

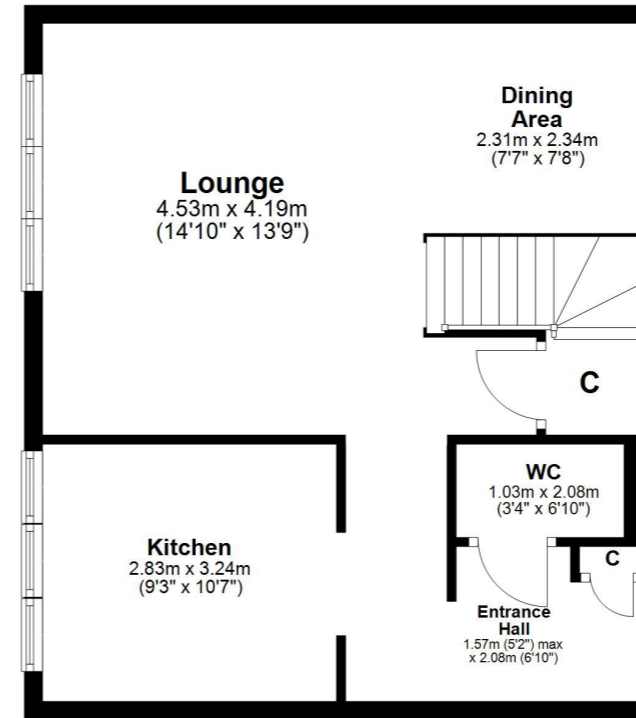
The accommodation within this property comprises of a split level reception hallway which has a cloakroom/WC. The living room and open-plan kitchen area provides a fabulous social area within the heart of the home, with Crittall leaded windows. The living area has timber flooring and a high ceiling adding to the feeling of space.

The main bedroom is a double sized apartment with stain leaded windows, walk-through mirror fronted fitted wardrobes which gives access to a luxury en-suite bathroom with a three piece shower suite. The second double sized bedroom has a stain leaded windows and storage closet. The house bathroom provides a three-piece suite with over bath shower and modern vanity unit.

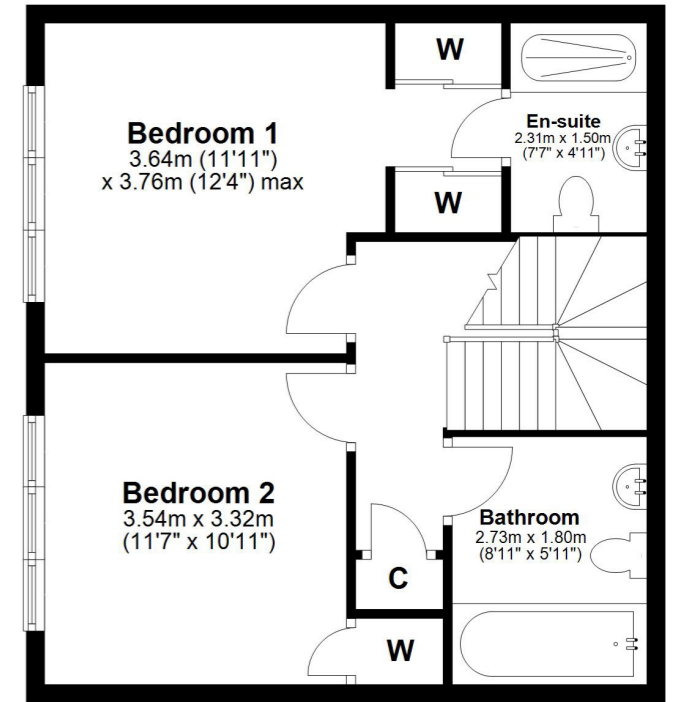




Ground Floor



First Floor



Quarrier's Village is located between the villages of Bridge of Weir and Kilmacolm. Bridge of Weir has good road links towards the M8 motorway, Glasgow International Airport and Glasgow City Centre, it offers a wide range of local amenities including restaurants, shops, and a library. Kilmacolm provides a further range of shops, restaurants and bars. There is also private schooling nearby at St. Columba's in Kilmacolm. There are two 18 hole golf courses nearby in Bridge of Weir, and there is fishing available on the River Gryffe.

BW2571 | Sat Nav: 2 Mount Zion, Quarrier's Village, PA11 3TD

For the full home report visit www.corumproperty.co.uk

* All measurements and distances are approximate Floorplans are for illustration purposes and may not be to scale.



WE'RE **SOLD** ON
YOUR FUTURE



Corum Bridge of Weir
2 Windsor Place, Main Street, Bridge Of Weir, PA11 3AF

T: 01505 691 400

E: bridgeofweir@corumproperty.co.uk

www.corumproperty.co.uk