



15 WELLMEADOW FARM

MEADOW WAY, NEWTON MEARNS

www.corumproperty.co.uk





2 | BEDROOMS

1 | BATHROOM

1 | PUBLIC ROOM

A contemporary styled first floor apartment within a lovely private development.

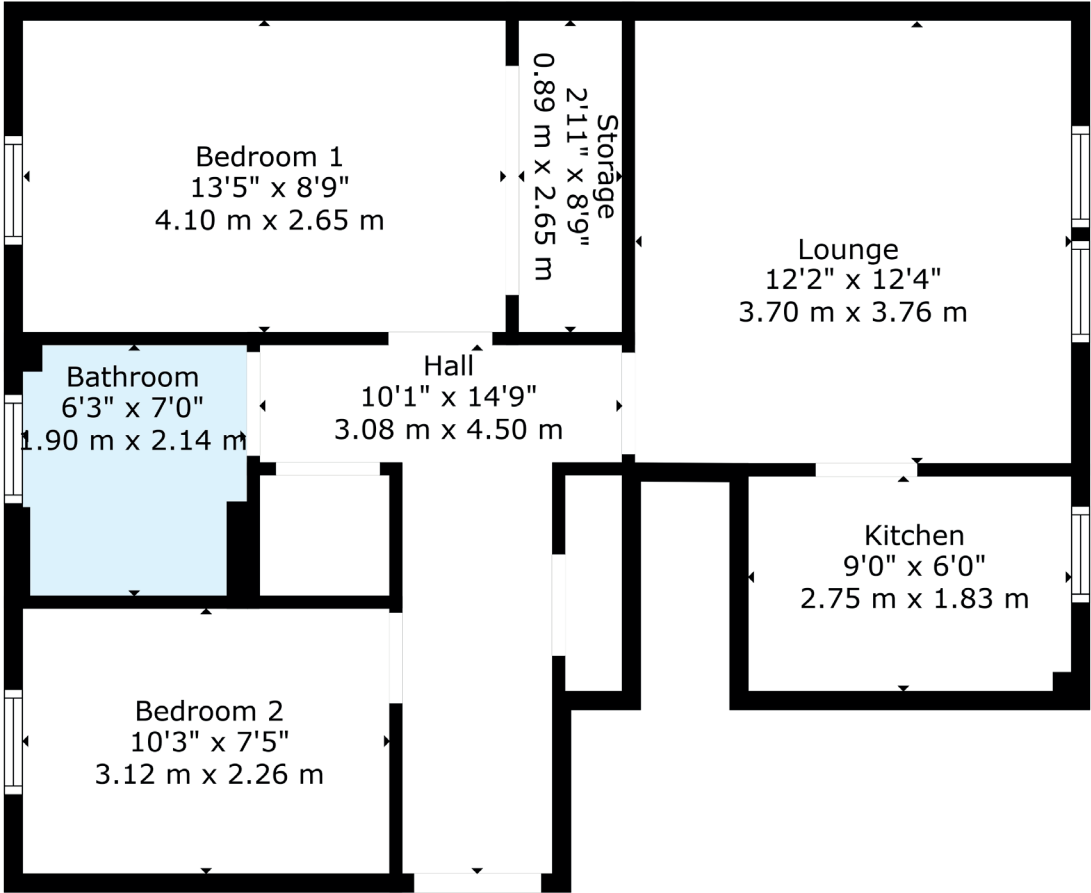
Forming part of this much admired and highly successful retirement development, Corum are delighted to present to the market this first floor apartment that has been comprehensively refurbished and upgraded to offer contemporary style living within this retirement development.

Suitable for those aged over 60, the apartment has many notable features including an efficient electric heating system, double glazed windows and the interior displays lovely modern neutral tones in addition to contemporary fitted kitchen and shower room.

Security entrance leads into residents' entrance the accommodation in brief providing a reception hallway with very generous storage provided including a utility cupboard, principal lounge leading kitchen with a full range of integrated appliances, two well proportioned bedrooms with storage and a contemporary fitted shower room with modern tiling and lighting.

The development is accessed via private residents' driveway and the surrounding gardens provide lots of wildlife, circulation space, pathways and walkways. Private residents' parking.





The property is extremely convenient for nearby amenities. Numerous shops and a variety of restaurants, supermarkets and independent retailers can be found at the nearby Mearns Cross Shopping Centre and Greenlaw Village. An abundance of sports and leisure facilities are available within East Renfrewshire including Parklands Country Club, David Lloyd Sports Club, Whitecraigs and East Renfrewshire Golf Clubs, Whitecraigs Tennis Club and Rouken Glen Park which was voted UK's Best Park of 2016, and there are also superb transport links close to hand (Patterton Station and Whitecraigs Station) which provide swift access to the city centre and Ayrshire. The property also has easy access to the M77, which also provides swift access to the city centre and the motorway network.

NM4504 | Sat Nav: Wellmeadow Farm, Meadow Way, Newton Mearns, G77 6XJ

For the full home report visit www.corumproperty.co.uk

* All measurements and distances are approximate Floorplans are for illustration purposes and may not be to scale.



WE'RE **SOLD** ON
YOUR FUTURE



Corum Newton Mearns
134 Ayr Road, Newton Mearns, G77 6EG

Tel: 0141 639 5888

Email: n.mearns@corumproperty.co.uk

www.corumproperty.co.uk