



25 EVIE WYND

NEWTON MEARNs

www.corumproperty.co.uk





5 | BEDROOMS

3 | BATHROOMS

1/2 | PUBLIC ROOMS

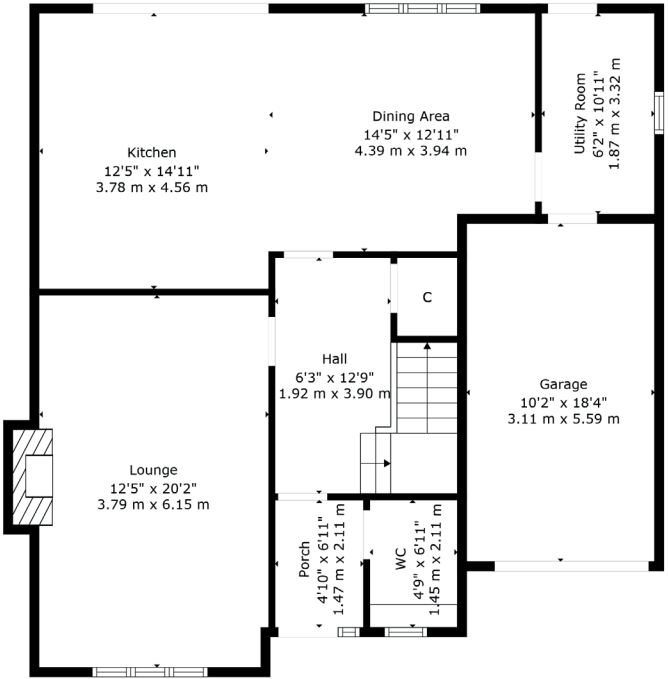
An impressive, detached Cala villa set within level garden grounds.

This luxury villa designed by Cala Homes enjoys a lovely position within this popular residential development. Set within level garden grounds the subjects are well presented throughout and present an easy move to the local marketplace.

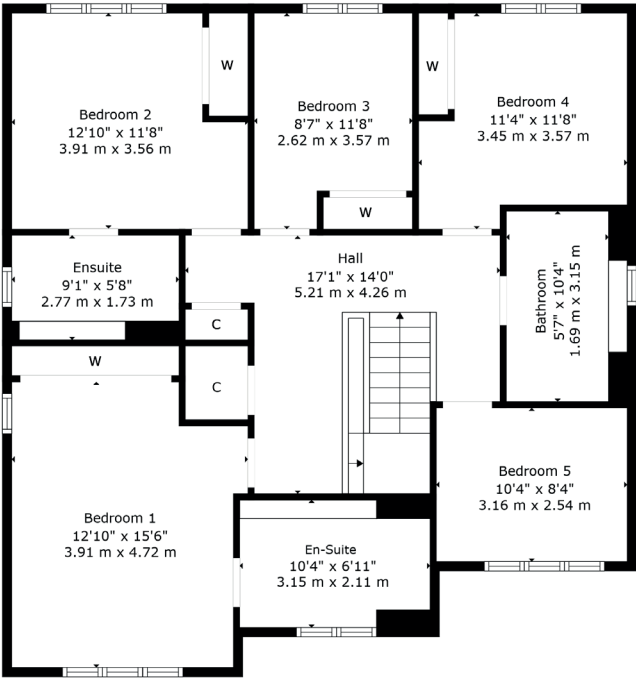
The ground floor extends to entrance porch with WC adjacent, spacious reception hallway with storage adjacent, splendid formal lounge with feature fireplace, fantastic open plan dining kitchen with bifold doors to gardens. Utility room adjacent with access to rear gardens and to integral garage. Upstairs bright and spacious landing area gives access to generous principal bedroom with en-suite bathroom, second double bedroom with fitted wardrobes and en-suite shower room, three further good bedrooms (two with fitted storage), and modern main family bathroom. The specification includes a system of gas central heating, double glazing, and overall, the subjects are well presented and decorated throughout.

Externally the property is set within level and easily maintained rear garden grounds. Open outlook to front. Monoblock driveway providing ample vehicular parking leading to garage.





Ground Floor



1st Floor

Newton Mearns is one of the most sought after suburbs within the south side of Glasgow. The property is superbly placed for a wide range of amenities and indeed nationally recognised schooling. The property is a short distance away from excellent shopping at The Avenue at Mearns Cross and Greenlaw Village. There are an abundance of sports and recreational facilities found within the district which include excellent golf courses, parks, tennis clubs and there are a variety of country pursuits found nearby. Local train stations include Whitecraigs Station and Patterton Station.

NM4508 | Sat Nav: 25 Evie Wynd, Newton Mearns, G77 5GR

For the full home report visit www.corumproperty.co.uk

* All measurements and distances are approximate Floorplans are for illustration purposes and may not be to scale.



WE'RE **SOLD** ON
YOUR FUTURE



Corum Newton Mearns
134 Ayr Road, Newton Mearns, G77 6EG

Tel: 0141 639 5888

Email: n.mearns@corumproperty.co.uk

www.corumproperty.co.uk