



**57 BALLANTRAE CRESCENT**

NEWTON MEARNS

[www.corumproperty.co.uk](http://www.corumproperty.co.uk)





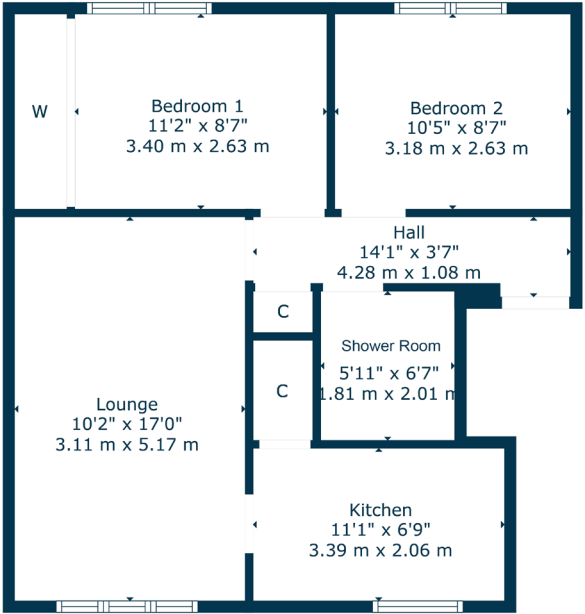
2 | BEDROOMS  
1 | BATHROOM  
1 | PUBLIC ROOM

First floor apartment with lovely private gardens and set within a peaceful cul-de-sac setting.

- Private parking space in addition to landscaped private gardens
- First floor apartment (top) within a great Newton Mearns setting
- Walking distance to high achieving schooling
- Suitable for a broad range of buyers

Amenities

Newton Mearns is one of the most sought-after suburbs within the south side of Glasgow. The property is superbly placed for a wide range of amenities and indeed nationally recognised schooling. The property is a short distance away from excellent shopping at The Avenue at Mearns Cross and Greenlaw Village. There are an abundance of sports and recreational facilities found within the district which include excellent golf courses, parks, tennis clubs and there are a variety of country pursuits found nearby at Hazeldene. Local train stations include Whitecraigs Station and Patterton Station.



Sat Nav:  
57 Ballantrae Crescent, Newton Mearns, G77 5TX

NM4518

\*All measurements and distances are approximate.  
Floorplans are for illustration purposes and may not be to scale.

For the full home report visit  
[www.corumproperty.co.uk](http://www.corumproperty.co.uk)





WE'RE **SOLD** ON  
YOUR FUTURE



Corum Newton Mearns  
134 Ayr Road, Newton Mearns, G77 6EG

**Tel:** 0141 639 5888

**Email:** [n.mearns@corumproperty.co.uk](mailto:n.mearns@corumproperty.co.uk)

[www.corumproperty.co.uk](http://www.corumproperty.co.uk)