



7 GREENKNOWE COURT

GLASGOW

www.corumproperty.co.uk


c o r u m

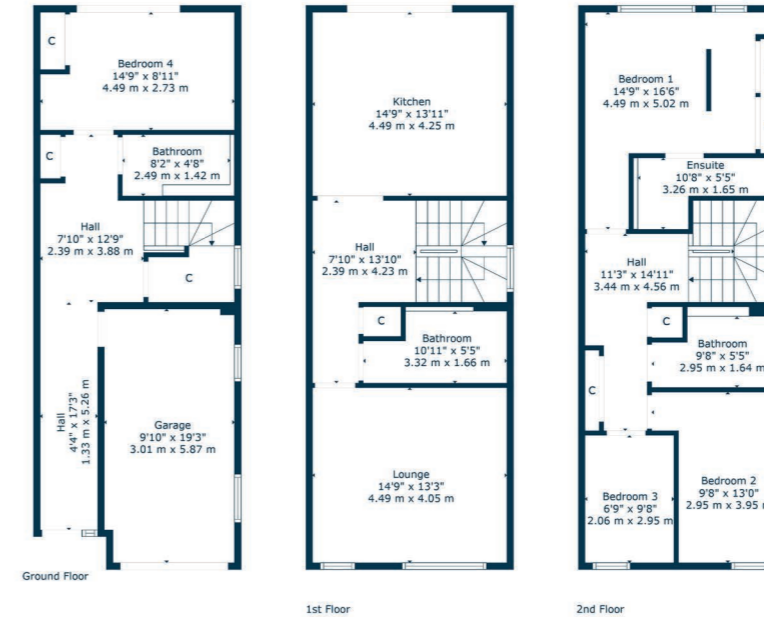
4 | BEDROOMS
3 | BATHROOM
2 | PUBLIC ROOM

Positioned in an established development in Glasgow's Southside, Greenknowe Court is a purpose built cul-de-sac of similar styled homes. Less than one mile from Shawlands, nearby various amenities and recreational pursuits this is a terrific proposition for buyers keen on the convenience of having little or nothing to do to a property.

- Modern townhouse in quiet cul-de-sac
- Flexible accommodation over 3 levels
- Fitted and integrated dining sized kitchen
- Driveway parking and integrated garage
- Southerly facing enclosed back garden
- Gas central heating and double glazing

Amenities

7 Greenknowe Court is nearby Newlands Park and Pollok Park where the Burrell Collection is found alongside Pollok House and various nature walks/playparks. Amenities are available at the Morrisons store bordering Shawlands, the Sainsbury's store in Muirend or at the Silverburn shopping centre in Pollok. Reputable state schooling is available locally whilst the closest train stations are at Pollokshaws West or Pollokshaws East.



Sat Nav:
7 Greenknowe Court, Glasgow, G43 1FW

SS4927

*All measurements and distances are approximate. Floorplans are for illustration purposes and may not be to scale.

For the full home report visit
www.corumproperty.co.uk



WE'RE **SOLD** ON
YOUR FUTURE



C O R U M

Corum Shawlands
247 Kilmarnock Road, Shawlands, G41 3JF

Tel: 0141 636 7588

Email: shawlands@corumproperty.co.uk

www.corumproperty.co.uk