



**1/1 156 WILTON STREET**  
NORTH KELVINSIDE

[www.corumproperty.co.uk](http://www.corumproperty.co.uk)







**4 | BEDROOMS**

**1 | BATHROOM**

**1 | PUBLIC ROOM**

**1/1 156 Wilton Street is a magnificent, four-bedroom, corner positioned apartment. Situated on the preferred first floor of this beautiful tenement building, the property offers superb open aspects and flexible living accommodation over five principal apartments and is located in the highly desirable North Kelvinside district.**

The property is initially accessed via a secure entry system leading to a very well-maintained residents' communal hall. The generous internal accommodation comprises; entrance vestibule, a large welcoming reception hall with ample storage off, and a stunning corner bay windowed lounge with wonderful cornice work, feature fireplace, space for dining, and striking, south facing open aspects down Belmont Street. There is a great sized dining kitchen to the rear with an ample selection of base and wall mounted units, and four great sized bedrooms, with the principal offering a beautiful feature fireplace, grand proportions and bay window formation. Finally, a stylish shower room with three-piece suite completes the accommodation on offer.

The property boasts a wealth of space and contemporary features and has gas central heating, double glazed sash and case windows throughout, secure entry system and beautifully presented residents' rear communal gardens.





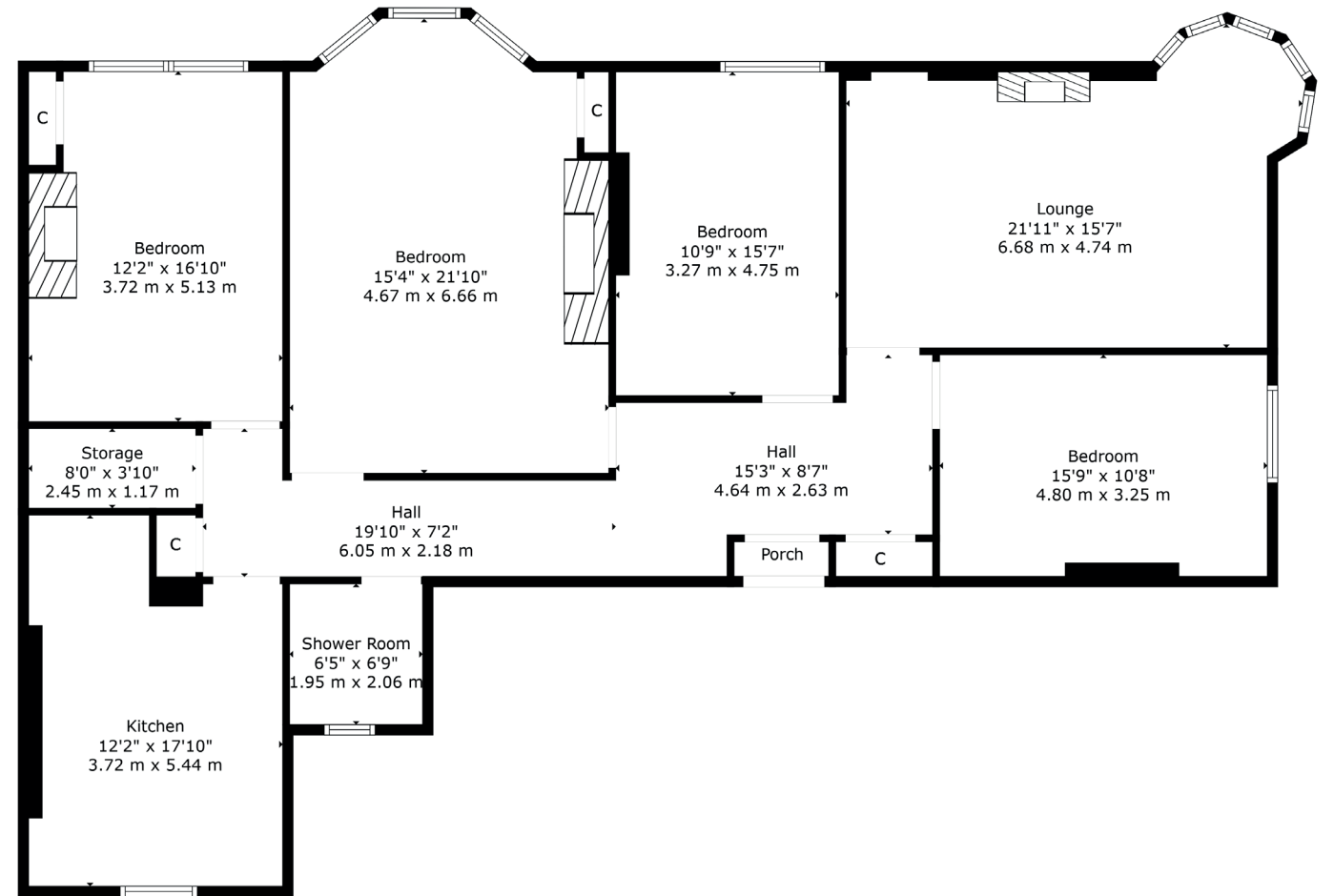












North Kelvinside is close to Byres Road and Great Western Road which provides an array of excellent amenities including bars, restaurants, delicatessens and retailers including Paesano Pizza, Cottonrake Bakery, Roots Fruits & Flowers, La Lanterna and Farrow & Ball. The River Kelvin Walkway, Botanic Gardens and Kelvingrove Park are also nearby.

Public transport is also available with a choice of Kelvinbridge underground, railway and bus routes to Glasgow City Centre and beyond.

**WE5267** | Sat Nav: 156 Wilton Street, North Kelvinside, Glasgow, G20 6BS

For the full home report visit [www.corumproperty.co.uk](http://www.corumproperty.co.uk)

\* All measurements and distances are approximate Floorplans are for illustration purposes and may not be to scale.





WE'RE **SOLD** ON  
YOUR FUTURE



Corum West End  
82 Hyndland Road, Glasgow, G12 9UT

**Tel:** 0141 357 1888

**Email:** westendnq@corumproperty.co.uk

[www.corumproperty.co.uk](http://www.corumproperty.co.uk)