



1 SEA TOWER COURT

AYR

www.corumproperty.co.uk





2 | BEDROOMS

1 | BATHROOM

1 | PUBLIC ROOM

An immaculate ground floor apartment, recently refurbished and set within this much-admired development located just a short distance from Ayr town centre.

Discreetly set off Bentfield Avenue and set amidst private residents gardens the development offers a small but exclusive collection of two bedroom apartments and conversions. The development has its own security-controlled entrance, lift and private parking.

This immaculate and spacious apartment occupies a pleasant ground floor position with a single lock garage. It is extremely well equipped and the present owners have undergone a comprehensive modernisation programme including a superb new kitchen, interior decor and stylish floor coverings.

The specification includes. modern gas central heat system together with UVPC double glazed windows, new bespoke fitted kitchen, modern bathroom, and separate shower room.

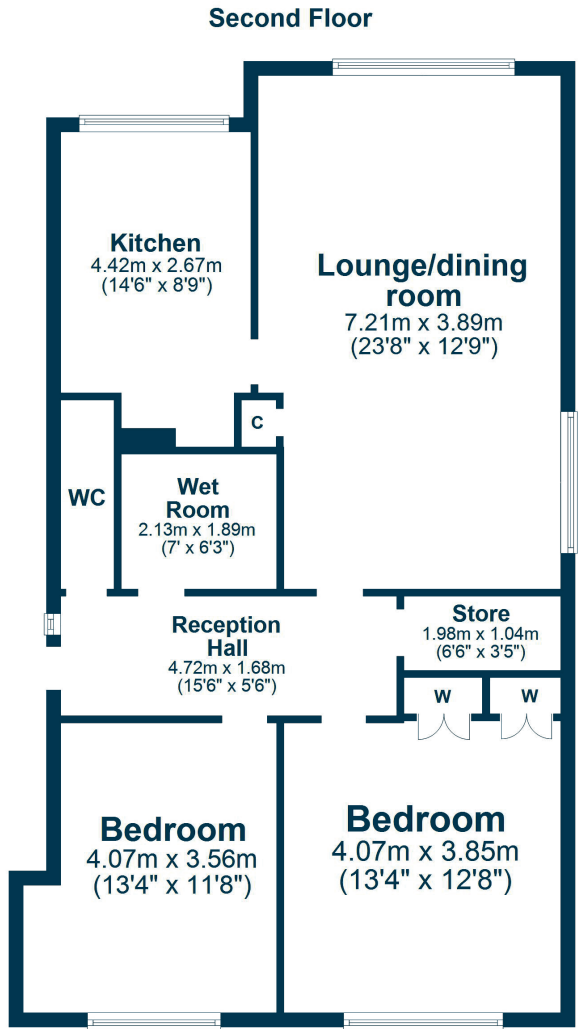
In more detail the accommodation comprises communal residents entrance hall, entrance vestibule, reception hall with storage cupboard, bright and spacious lounge/dining room, new modern fitted kitchen, two double bedrooms, bathroom and separate shower room.

Outside the communal gardens are maintained to a professional standard with lawned areas and a private parking area. There is single lock up garage.









Seatower Court is a located just off Racecourse Road in a fantastic position just a short distance from the sea front and Ayr town centre. Here you will find a wide range of shops, post office, cinema and mainline rail station.

AY4545 | Sat Nav: 1 Sea Tower Court, Ayr, KA7 2XT

For the full home report visit www.corumproperty.co.uk

* All measurements and distances are approximate Floorplans are for illustration purposes and may not be to scale.



WE'RE **SOLD** ON
YOUR FUTURE



Corum Ayr
10 Beresford Terrace, Ayr, KA7 2EG

Tel: 01292 880 888

Email: ayr@corumproperty.co.uk

www.corumproperty.co.uk