



8 ETTRICK PLACE

AYR

www.corumproperty.co.uk





2 | BEDROOMS

1 | BATHROOM

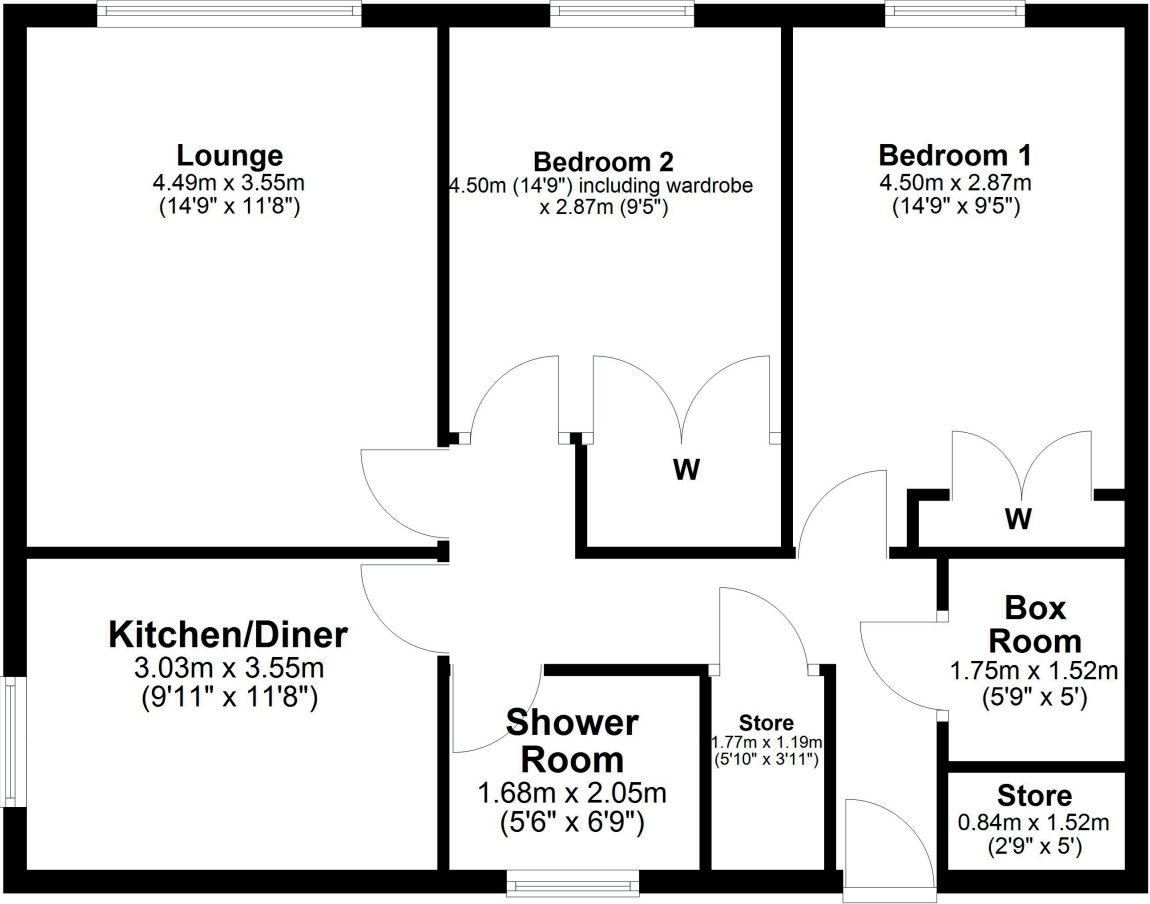
1 | PUBLIC ROOM

A fantastic top floor two bedroom flat in Ayr with views towards Arran. This spacious flat has a garage and features two double bedrooms with built-in wardrobes, a kitchen diner, a modern shower room. With a prime location between Ayr and Prestwick, this is a must-see.

Enjoy views towards Arran from this impressive two bedroom top floor flat, perfectly positioned between Ayr and Prestwick. Offering a spacious and well-designed layout, the property features a welcoming reception hall with three excellent storage cupboards, while both double bedrooms come complete with built-in wardrobes. The kitchen diner provides plenty of space for a dining table and chairs, and the modern shower room adds a fresh, contemporary touch.

Externally, the property benefits from well maintained communal areas, and the added advantage of a private garage provides secure parking or extra storage. With its sought-after location close to both Ayr and Prestwick, early viewing is advised.





8 Ettrick Place is located conveniently for a variety of amenities. For your shopping needs, several supermarkets are conveniently located nearby such as Tesco, Sainsbury's, Asda, Aldi and Heathfield Retail Park on Liberator Drive, offers an extensive selection of products and shops.

The area also boasts a variety of local shops, including pharmacies, furniture stores, ensuring all essential services are within easy reach. In terms of transportation, a choice of three rail stations are a short drive away, providing regular services to Glasgow and other destinations.

The property is well-connected to major road networks, with the A77 and A70 nearby, offering easy access to surrounding areas and beyond.

This combination of local amenities and excellent transport links makes 8 Ettrick Place a convenient and desirable location for residents.

AY5197 | Sat Nav: 8 Ettrick Place, Ayr, KA8 9HH

For the full home report visit www.corumproperty.co.uk

* All measurements and distances are approximate Floorplans are for illustration purposes and may not be to scale.

WE'RE **SOLD** ON
YOUR FUTURE



Corum Ayr
10 Beresford Terrace, Ayr, KA7 2EG

Tel: 01292 880 888

Email: ayr@corumproperty.co.uk

www.corumproperty.co.uk