



22 MOORHILL CRESCENT

NEWTON MEARNS

www.corumproperty.co.uk



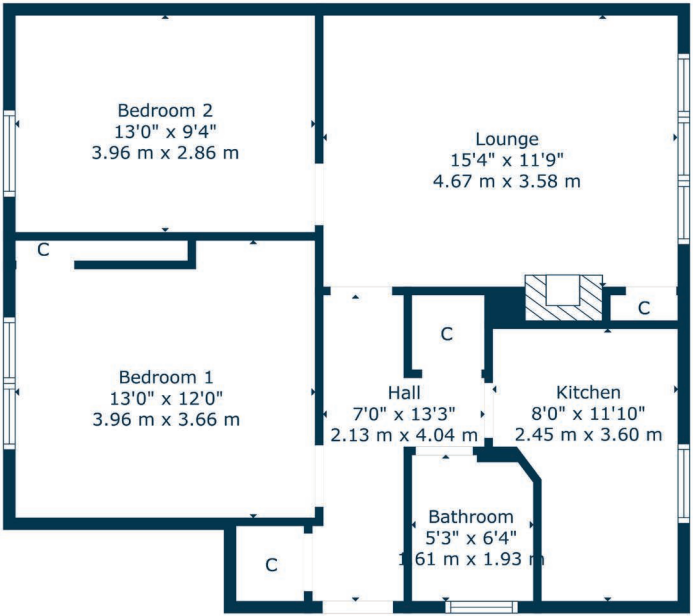
2 | BEDROOMS
1 | BATHROOM
1 | PUBLIC ROOM

Beautifully presented lower cottage flat in a popular and convenient Newton Mearns location.

- Lower cottage flat.
- Two bedrooms.
- Well proportioned rooms throughout.
- Private and mature garden grounds.
- Driveway.
- Excellent proximity to amenities and transport links.

Amenities

The property is extremely convenient for nearby amenities and nationally recognised schooling. Numerous shops and a variety of restaurants, supermarkets and independent retailers can be found at the nearby Mearns Cross Shopping Centre and Greenlaw Village. An abundance of sports and leisure facilities are available within East Renfrewshire including Parklands Country Club, David Lloyd Sports Club, Whitecraigs, East Renfrewshire and Eastwood Golf Clubs, Whitecraigs Tennis Club and Rouken Glen Park, and there are also superb transport links close to hand which provide swift access to the city centre and Ayrshire. The property also has easy access to the M77, which also provides swift access to the city centre and the motorway network.



Sat Nav:
22 Moorhill Crescent, Newton Mearns G77 6BN

NM4533

*All measurements and distances are approximate.
Floorplans are for illustration purposes and may not be to scale.

For the full home report visit
www.corumproperty.co.uk



WE'RE **SOLD** ON
YOUR FUTURE



Corum Newton Mearns
134 Ayr Road, Newton Mearns, G77 6EG

Tel: 0141 639 5888

Email: n.mearns@corumproperty.co.uk

www.corumproperty.co.uk