



**10 CRARAE PLACE**

NEWTON MEARNS

[www.corumproperty.co.uk](http://www.corumproperty.co.uk)







**4 | BEDROOMS**

**4 | BATHROOMS**

**2 | PUBLIC ROOMS**

**An extended detached villa enjoying a popular location.**

This modern detached villa has been significantly extended and upgraded to deliver a fantastic family home. Enjoying a quiet residential location within this lovely cul-de-sac, the property offers a great opportunity to the local marketplace.

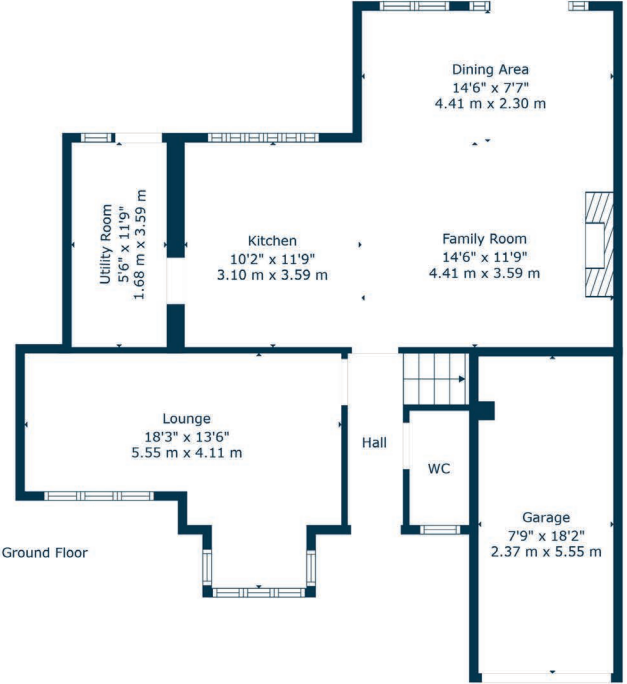
Ground floor accommodation extends to reception hallway with WC adjacent, modern fitted kitchen with a range of wall and base mounted units and access through to separate utility/laundry room, wonderful open plan family/dining area with access to gardens at rear. The ground floor is completed by a useful lounge/den/home office. Upstairs a bright and spacious landing area gives access to four great bedrooms, all with en-suite shower rooms and principal having walk in wardrobe. The specification of the property includes a system of gas central heating, double glazing, upgraded kitchen and bathrooms, and the subjects are well presented and decorated throughout.

Externally the property is set within private, level and easily maintained rear gardens. Vehicular parking to front leading to garage.









Newton Mearns is one of the most sought-after suburbs within the south side of Glasgow. The property is superbly placed for a wide range of amenities and indeed nationally recognised schooling. The property is a short distance away from excellent shopping at The Avenue at Mearns Cross and Greenlaw Village. There are an abundance of sports and recreational facilities found within the district which include excellent golf courses, parks, tennis clubs and there are a variety of country pursuits found nearby. Local train stations include Patterton Station and Whitecraigs Station.

**NM4544** | Sat Nav: 10 Crarae Place, Newton Mearns, G77 6XX

For the full home report visit [www.corumproperty.co.uk](http://www.corumproperty.co.uk)

\* All measurements and distances are approximate Floorplans are for illustration purposes and may not be to scale.





WE'RE **SOLD** ON  
YOUR FUTURE



Corum Newton Mearns  
134 Ayr Road, Newton Mearns, G77 6EG

**Tel:** 0141 639 5888

**Email:** [n.mearns@corumproperty.co.uk](mailto:n.mearns@corumproperty.co.uk)

[www.corumproperty.co.uk](http://www.corumproperty.co.uk)