



**FLAT 3, 16 MANSIONHOUSE ROAD**  
LANGSIDE

[www.corumproperty.co.uk](http://www.corumproperty.co.uk)





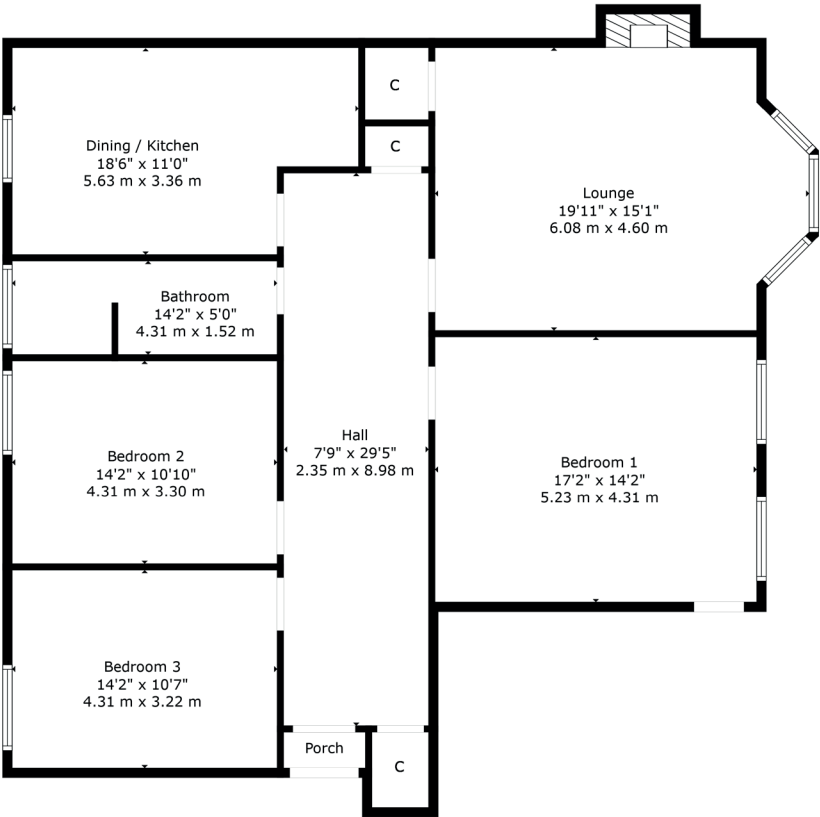
3 | BEDROOMS  
1 | BATHROOM  
1 | PUBLIC ROOM

An incredibly well finished and generously proportioned first floor town flat, which is close to a range of coffee shops, parks and transport links.

- First floor town flat
- 3 double bedrooms
- Large bay window lounge with wood burner
- Dining sized kitchen
- Great original features
- Amazing location

Amenities

16 Mansionhouse Road is within walking distance of an abundance of local shops and amenities in Langside, Battlefield, Shawlands and Strathbungo. Queen's Park is 200 yards from the front door providing recreational space whilst the local railway stations at Crossmyloof, Mount Florida and Langside are all within half a mile of the property. A number of frequent bus services are also found nearby.



Sat Nav:  
16 Mansionhouse Road, Langside, G41 3DN

SS4968

\*All measurements and distances are approximate.  
Floorplans are for illustration purposes and may not be to scale.

For the full home report visit  
[www.corumproperty.co.uk](http://www.corumproperty.co.uk)



WE'RE **SOLD** ON  
YOUR FUTURE



Corum Shawlands  
247 Kilmarnock Road, Shawlands, G41 3JF

**Tel:** 0141 636 7588

**Email:** shawlands@corumproperty.co.uk

[www.corumproperty.co.uk](http://www.corumproperty.co.uk)