



1/2, 76 DEANSTON DRIVE
SHAWLANDS

www.corumproperty.co.uk



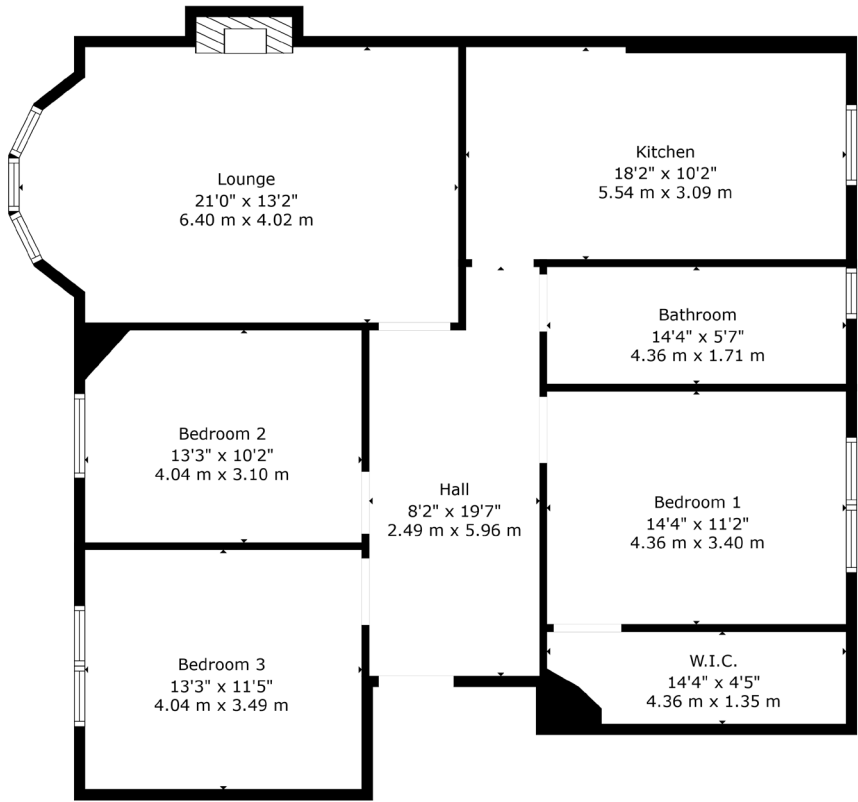
3 | BEDROOMS
1 | BATHROOM
1 | PUBLIC ROOM

Occupying a bright first floor position in the centre of Shawlands, this four apartment townflat delivers exceptional accommodation and first class finishes. The property is nearby Queen’s Park, thriving amenities and regular public transport options.

- Purpose built blonde stone built tenement
- Bright first floor position in Shawlands
- Three double sized bedrooms
- Beautifully fitted dining sized kitchen
- Numerous period features retained
- Only 400 yards to Queen’s Park

Amenities

76 Deanston Drive is in close proximity to thriving shops, bars, coffee houses, bakeries and restaurants. A Morrisons, a Sainsburys, a Tesco and an M&S store are all within one mile of the property. The fringe of Queen’s Park hosts a Farmers’ Market on the 1st and 3rd Saturday of each month whilst recreational space, tennis courts and football pitches are available within the park. Shawlands Civic Square is also nearby, designed to offer a destination for markets, dance, craft events, speakers and debate.



Sat Nav:
76 Deanston Drive, Shawlands, G41 3LH

SS4970

*All measurements and distances are approximate.
Floorplans are for illustration purposes and may not be to scale.

For the full home report visit
www.corumproperty.co.uk



WE'RE **SOLD** ON
YOUR FUTURE



Corum Shawlands
247 Kilmarnock Road, Shawlands, G41 3JF

Tel: 0141 636 7588

Email: shawlands@corumproperty.co.uk

www.corumproperty.co.uk