



1/2, 146 KING'S PARK ROAD

KING'S PARK

www.corumproperty.co.uk



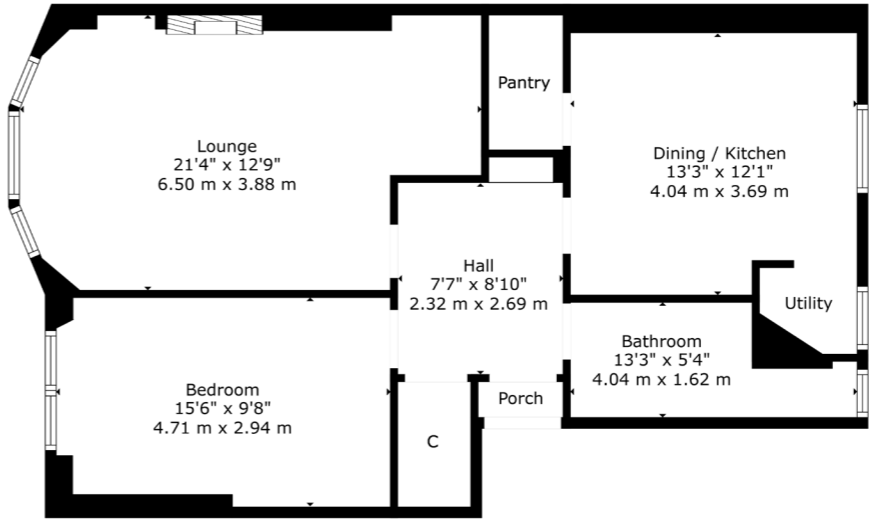
1 | BEDROOM
1 | BATHROOM
1 | PUBLIC ROOM

Occupying a particularly bright position in a bustling pocket of Glasgow, this excellent flat has a fitted dining kitchen and impressive shared gardens to the rear. The property has been very well cared for and upgraded by our client since they took ownership.

- Bright first floor tenement home
- Several amenities in close proximity
- Large bay windowed lounge to front
- Generous double sized bedroom
- Fitted dining kitchen to rear
- Double glazed and gas heating

Amenities

146 King's Park Road is close to the popular independent coffee houses, restaurants, bars and shops in Mount Florida and Battlefield. Recreational pursuits are available locally at Queens Park and Mount Florida train station is approximately 500 yards from the front door providing several services an hour into the city centre.



Sat Nav:
146 King's Park Road, King's Park, G44 4SX

SS5013

*All measurements and distances are approximate.
Floorplans are for illustration purposes and may not be to scale.

For the full home report visit
www.corumproperty.co.uk



WE'RE **SOLD** ON
YOUR FUTURE



Corum Shawlands
247 Kilmarnock Road, Shawlands, G41 3JF

Tel: 0141 636 7588

Email: shawlands@corumproperty.co.uk

www.corumproperty.co.uk