



1/2, 36 WAVERLEY STREET

SHAWLANDS

www.corumproperty.co.uk



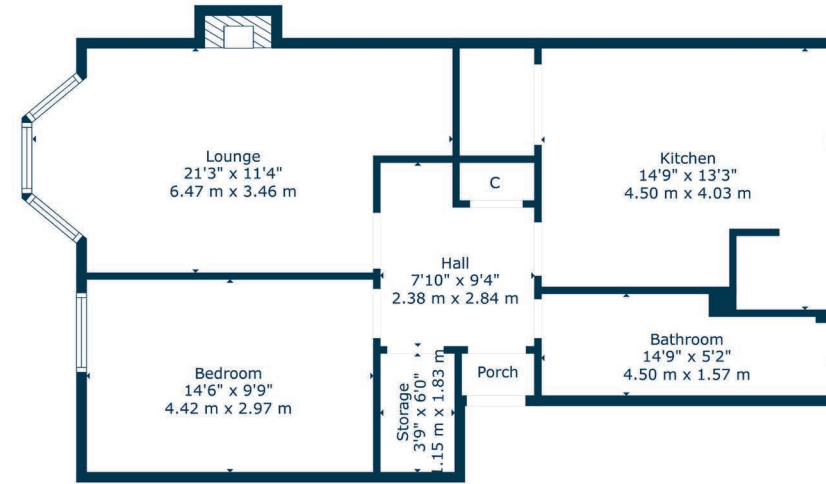
1 | BEDROOM
 1 | BATHROOM
 1 | PUBLIC ROOM

This first-floor home is found in a purpose built tenement building in Waverley Street, a very popular Shawlands address. The property has been meticulously cared for by our client and it represents a terrific opportunity to live in a thriving part of Glasgow's Southside.

- First floor flat in centre of Shawlands
- Fitted dining sized kitchen
- Tasteful décor and flooring throughout
- Gas heating & double glazed windows
- Fresh three piece bathroom suite
- Superb location, amenities & transport

Amenities

36 Waverley Street is in close proximity to all shops, bars, coffee houses, bakeries and restaurants in Shawlands and Strathbungo. Sainsburys, Tesco, Co-op and M&S stores are all within one mile of the property. Pollok Park and Queen's Park both have excellent recreational space and Shawlands Civic Square is also nearby, designed to offer a destination for markets, dance, craft events, speakers and debate.



Sat Nav:
 1/2, 36 Waverley Street, Shawlands, G41 2DZ

SS4972

*All measurements and distances are approximate. Floorplans are for illustration purposes and may not be to scale.

For the full home report visit
www.corumproperty.co.uk



WE'RE **SOLD** ON
YOUR FUTURE



Corum Shawlands
247 Kilmarnock Road, Shawlands, G41 3JF

Tel: 0141 636 7588
Email: shawlands@corumproperty.co.uk

www.corumproperty.co.uk