



2/1, 148 QUEENS DRIVE

QUEEN'S PARK

www.corumproperty.co.uk





4 | BEDROOMS

1 | BATHROOM

1 | PUBLIC ROOM

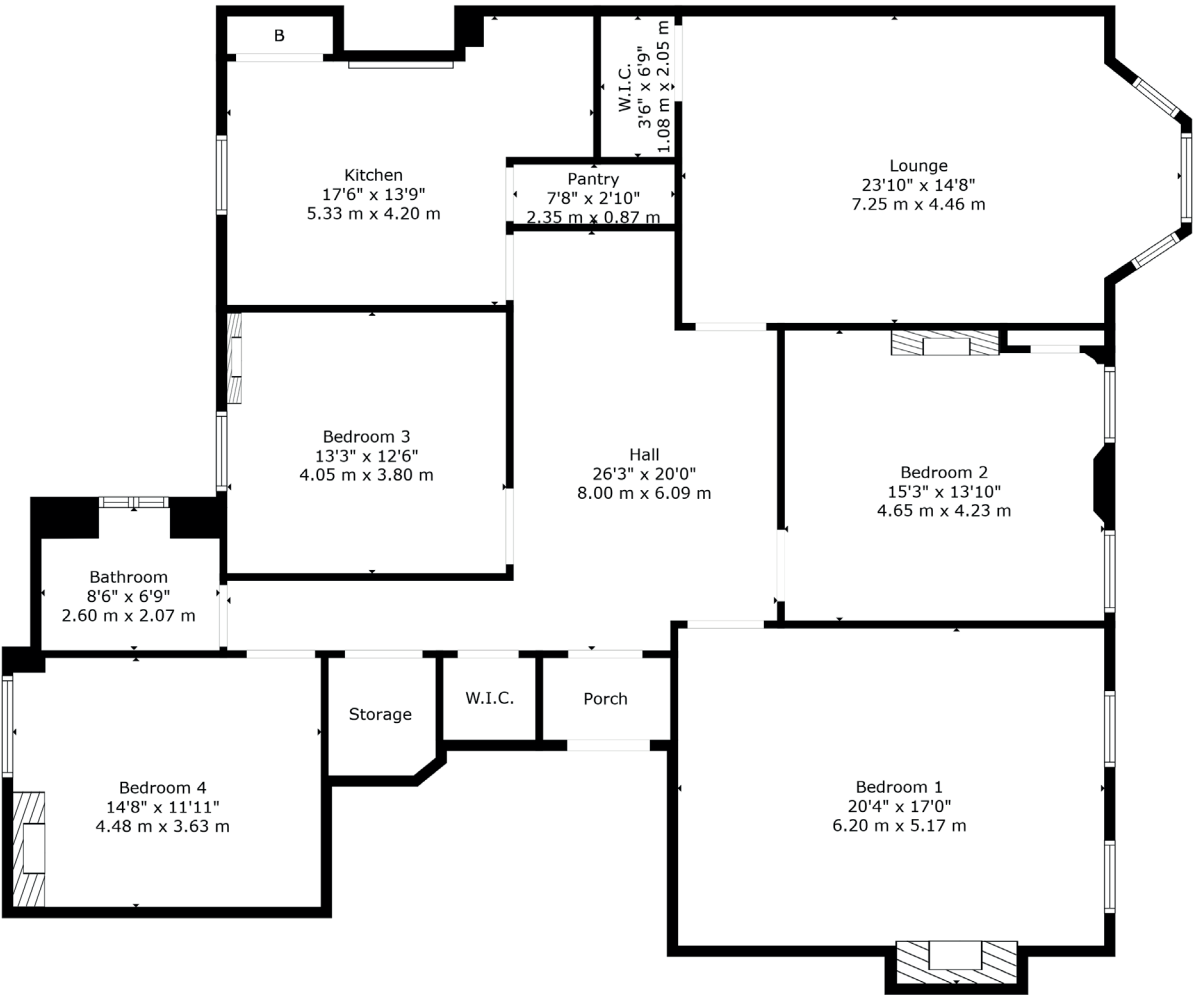
An outstanding larger style five apartment town flat overlooking Queen's Park and the bowling green.

Forming part of this iconic B listed building and with wonderful views on to Queen's Park, this expansive town flat offers versatile accommodation within five principal apartments. The property offers a broad range of original features, along with a modern specification and fresh neutral décor.

The complete accommodation extends to: stunning cupola within well maintained residents' close, broad reception hallway with two large storage cupboards off, a substantial bay windowed lounge has uninterrupted South West views towards Queen's Park while providing additional storage. Four double bedrooms provide flexible living, the principal bedroom of significant size along with sensational cornice detail and fireplace detail. A contemporary dining sized kitchen offers a walk-in pantry, base and wall mounted units, along with integrated appliances. The accommodation is completed by a charming three piece bathroom.

The specification includes: communal stairwell through secure door entry, gas central heating via combi boiler, and sash and casement windows. A number of traditional features are still in situ, namely detailed cornice, moulded doors, and deep skirtings. There is also a private storage cupboard in the cellar area.





148 Queen's Drive strikes the perfect balance of peaceful green space whilst just a brief walk from the thriving community of Strathbungo where of a diverse range of independent coffee houses, restaurants and bars are located. Further amenities can be found towards Pollokshields on Kildrostan Street and Nithsdale Road where popular eateries and shops are in abundance.

Queens Park is literally on your doorstep, delivering nature walks, football pitches and tennis court. Pollokshields West and Queen's Park train stations are both a short walk of the front door.

SS5004 | Sat Nav: 148 Queens Drive, Queens Park, G42 8QN

For the full home report visit www.corumproperty.co.uk

* All measurements and distances are approximate Floorplans are for illustration purposes and may not be to scale.



WE'RE **SOLD** ON
YOUR FUTURE



Corum Shawlands
247 Kilmarnock Road, Shawlands, G41 3JF

Tel: 0141 636 7588

Email: shawlands@corumproperty.co.uk

www.corumproperty.co.uk