



**57 CUMBRAE DRIVE**  
DOONFOOT

[www.corumproperty.co.uk](http://www.corumproperty.co.uk)







**5 | BEDROOMS**

**2 | BATHROOMS**

**2 | PUBLIC ROOMS**

**Stylish, spacious, and seriously Impressive, 57 Cumbrae Drive is a 5-bedroom executive villa packed with wow-factor - former show home styling, stunning south-facing gardens, luxury finishes throughout, and a dream open-plan layout perfect for modern family life. Complete with hot tub, built-in 65" TV, and custom outdoor pizza oven, this home is ready for you to move straight in and start living the high life.**

The ex-show home you have been waiting for - 57 Cumbrae Drive. Step into serious style with this stunning 5-bedroom executive villa, a former MacTaggart & Mickel show home that still steals the spotlight. Perfectly positioned on a generous plot, this home has a fully enclosed, sun-drenched south-facing garden made for entertaining. Think lazy weekends on the patio, barbecues with friends, evenings soaking in your 6-seater hot tub, and a custom-built outdoor kitchen featuring a Komodo Joe XL grill and pizza oven. Inside, the bright and airy layout flows beautifully. At the heart of the home, the open-plan kitchen, dining, and family room creates a show-stopping space to gather and entertain, with integrated appliances and patio doors leading straight to the garden. A separate lounge with a luxury fireplace offers the perfect retreat, while the utility room and home office area lead through to the garage. The ground floor W.C completes the ground floor accommodation.

Upstairs, five generously proportioned bedrooms include a fabulous master suite with an en-suite shower room, with four of the bedrooms offering built-in wardrobes for effortless storage. A sleek, modern family bathroom with shower and separate bath completes the upper floor.

This home comes packed with high-end extras — full-size fridge and freezer, dishwasher, washing machine, tumble dryer, all floor coverings, all light fittings, all window coverings and curtain poles, a composite-clad garden shed, a 65" built-in Samsung TV in the family room, and of course, the hot tub and custom outdoor kitchen.

A driveway and integral garage complete the property, while the low-maintenance, beautifully landscaped gardens, with artificial grass, ensure the outside space is every bit as impressive as the inside.

Early viewing is essential because homes like this are in high demand.





















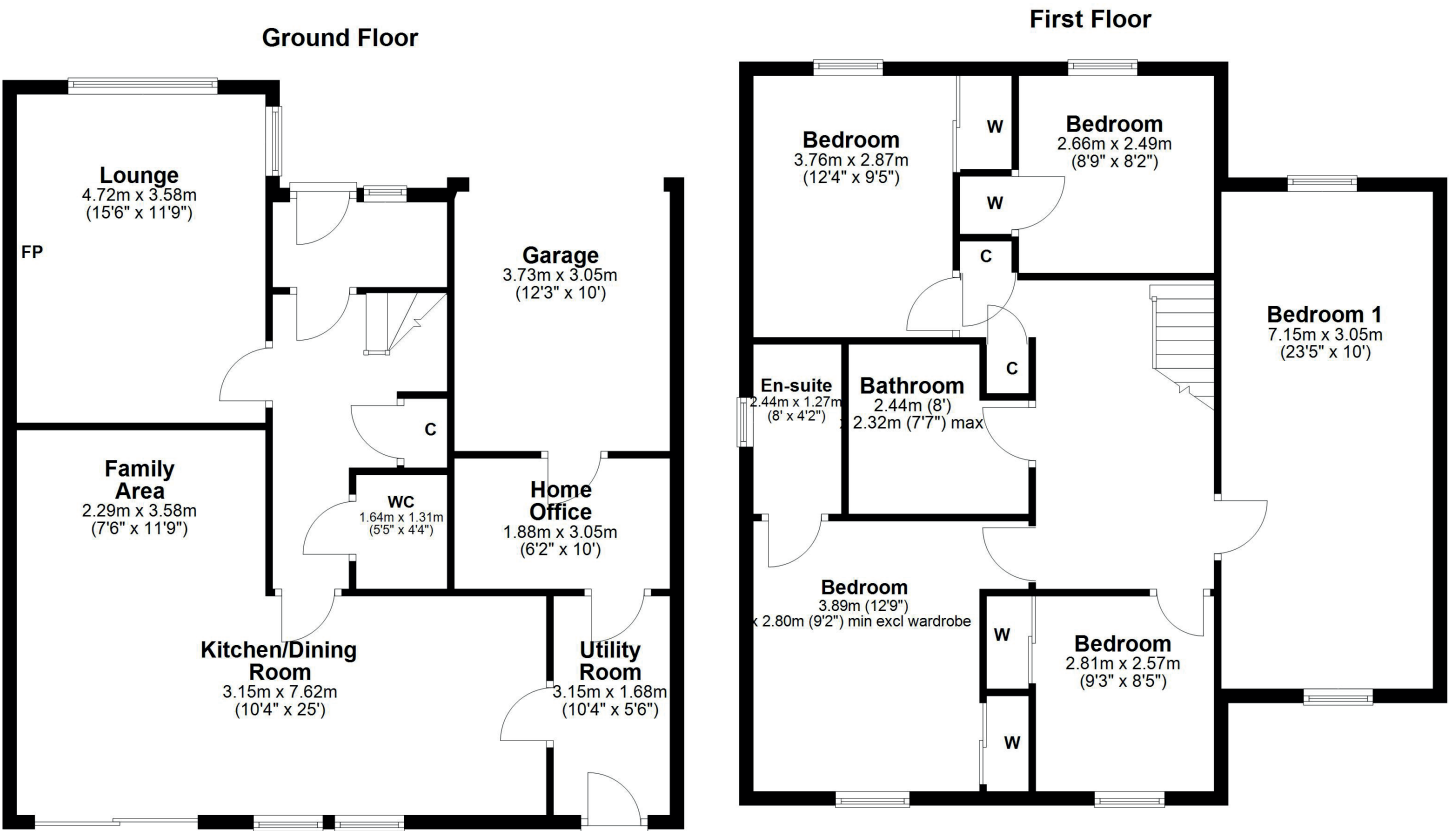












Cumbræ Drive forms part of a stylish development by MacTaggart & Mickel within close proximity to the seafront and the highly regarded Doonfoot Primary School. There are a variety of local amenities within the immediate area while Ayr town centre is around three miles distant and provides a more comprehensive range of amenities including supermarket and retail shopping. For the commuter there are excellent road and rail links to Glasgow and surrounding areas.

**AY5233** | Sat Nav: 57 Cumbræ Drive, Doonfoot, KA7 4GA

For the full home report visit [www.corumproperty.co.uk](http://www.corumproperty.co.uk)

\* All measurements and distances are approximate Floorplans are for illustration purposes and may not be to scale.





WE'RE **SOLD** ON  
YOUR FUTURE



Corum Ayr  
10 Beresford Terrace, Ayr, KA7 2EG

**Tel:** 01292 880 888

**Email:** [ayr@corumproperty.co.uk](mailto:ayr@corumproperty.co.uk)

[www.corumproperty.co.uk](http://www.corumproperty.co.uk)